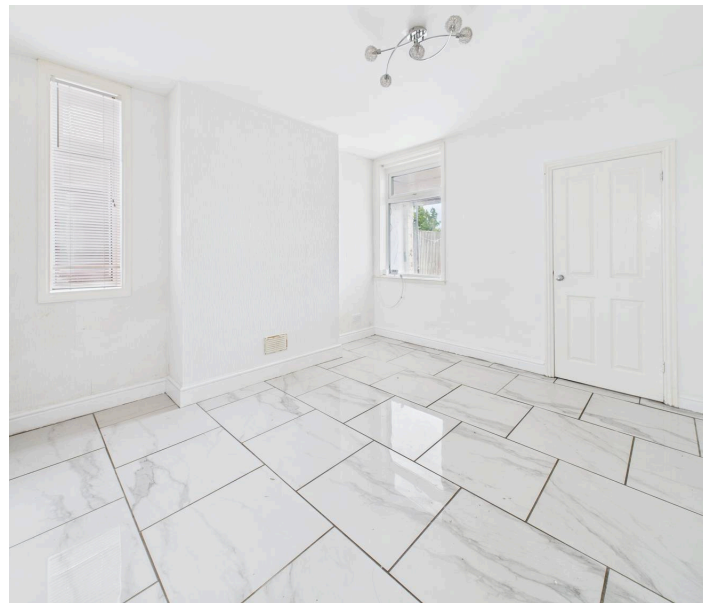




16 Milton Street, Kirkby-In-Ashfield, NG17 7JB

Guide Price **£125,000**

DavidJames
the estate agent



16 Milton Street

Kirkby-In-Ashfield, Nottingham

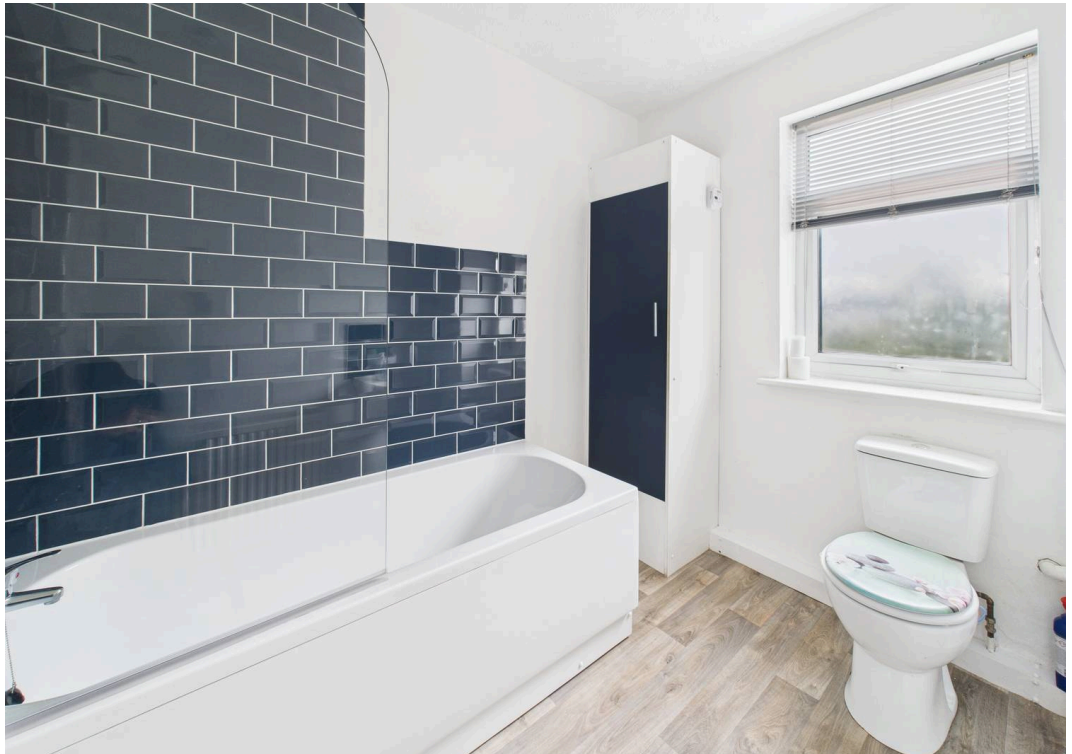
Larger than average 3-bedroom end-terraced house with modern kitchen, lounge, dining room, and contemporary bathroom. Includes gas central heating, double glazing, and rear garden. Ideal for first-time buyers or investors. No chain. Council Tax band: A

Tenure: Freehold

EPC Energy Efficiency Rating: D

EPC Environmental Impact Rating: E

- Larger than average style end terraced house
- Three bedrooms
- Lounge, separate dining room with tiled flooring
- Modern kitchen with white units and integrated oven and hob
- Modern bathroom/Wc with white suite and mains fed shower
- Combination gas central heating, UPVC double glazing
- Good sized rear garden as well as hardstanding area
- Sold with no upward chain
- Perfect first time buy or buy-to-let investment



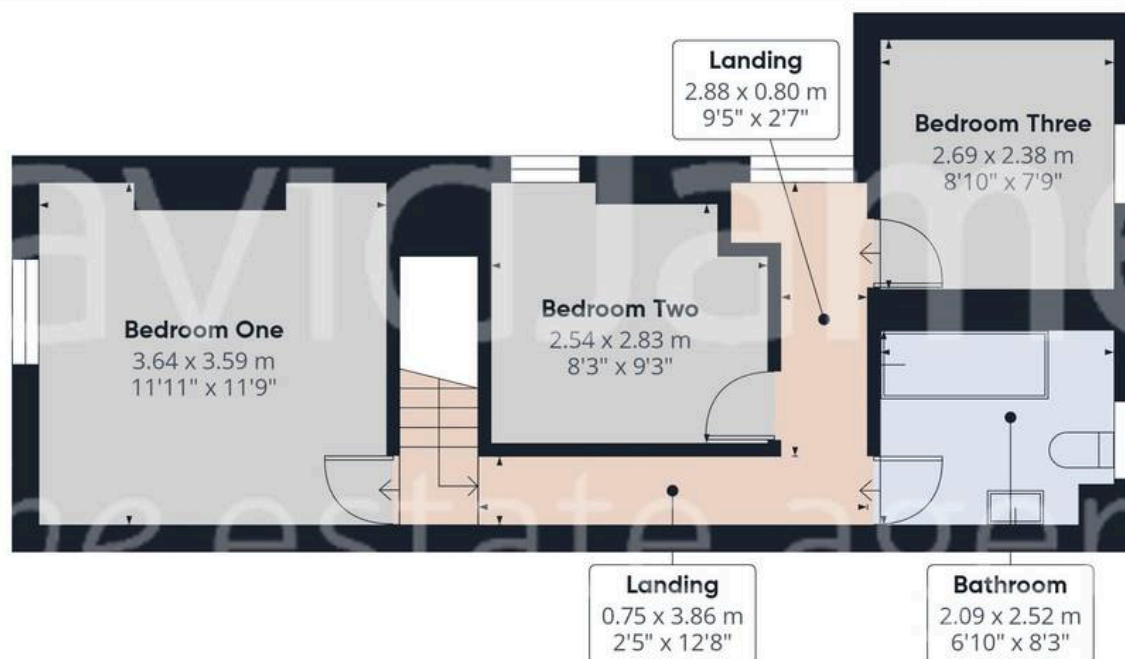


Floor 0

Approximate total area⁽¹⁾

76.2 m²

821 ft²



Floor 1

(1) Excluding balconies and terraces

Calculations reference the RICS IPMS 3C standard. Measurements are approximate and not to scale. This floor plan is intended for illustration only.

GIRAFFE360



David James Estate Agents

43 Forest Street, Sutton-in-Ashfield - NG17 1DA

01623 554084 • sutton@david-james.com • www.david-james.com