



10 The Green, Goldenbank

Guide Price £675,000



Heather & Lay  
*The local property experts*



# 10 The Green

## Goldenbank, Falmouth

- Detached Eco Home Built In 2021
- Highly Efficient With Free Electricity Until December 2029
- EPC = A (115 Points) Top 5% Of Homes In Uk!
- Three Double Bedrooms With Master En-Suite
- Open Plan Living Area
- Large Terrace With South & West Aspect
- Off Road Parking For 3 Plus A Garage With Electric Vehicle Charging
- Edge Of Golf Course With An Abundance Of Wildlife
- Close To Swanpool Beach With Cafe, Restaurant & Beautiful
- NO ONWARD CHAIN & AVAILABLE NOW!

**THE PROPERTY** - Our vendors were the first to move in on this fantastic development and had the “pick of the bunch”. Number 10 is located inside the main crescent and away from road noise and with no passing traffic. Designed and built as an “upside-down” house due to its remarkable countryside views over and beyond the golf course, with a stunning terrace off the living room that is both large and sunny and where the owners can watch the sunset. The property is highly efficient with a focus on green energy, solar panels, air sourced heat pump, triple glazing, mechanical ventilation, large electrical storage battery and latest technology insulation. Currently our vendor has a deal running with Octopus Energy whereas they pay no energy bills until 31st December 2029 (This has been checked and can be transferred to the new owner). The three bedrooms will all accommodate double beds and have built-in wardrobes plus the main bedroom has an en-suite facility. Outside you have a small garden with patio seating and to the front there are three parking spaces and a good sized garage with electric car charge point. Very well-presented and perfect for those who golf or just enjoy the countryside. CAT 5 wired and fibre optic broadband. Electric sun blinds.







**QUOTE FROM THE CURRENT OWNERS** - We were the first people to move into The Green nearly four years ago, attracted by the prospect of living in a low-maintenance, zero-carbon house that takes full advantage of its situation in the beautiful countryside that surrounds it, yet is close enough to Falmouth's beaches and town centre to enable its occupants to enjoy all the amenities Falmouth has to offer. We were particularly attracted to our property because of its additional parking and its position in a quiet cul-de-sac with no passing traffic and extensive views over the golf course and beyond. The house has fully lived up to our expectations and is the most comfortable and cheap-to-run house we've ever lived in. During our time here, a five-year Zero Bills deal was agreed with Octopus Energy which began on 1 January 2025 with nothing to pay for electricity during that time. This deal will be transferable to the new owners of the house and has made living here even more economical. Sadly, we are having to leave the house now to move nearer to family members in the South East.. As we have already purchased another property, there is no onward chain involved.

**THE LOCATION** - Just a 6-7 minute walk from/to Swanpool beach and adjacent to the much admired Falmouth Golf Course number 10 benefits from being so well positioned and the walk into Falmouth Town is pretty and quite easy along the South West coastal path or along other routes. There is a regular bus that stops just outside the development. On the golf course there is also a recently built clubhouse which is open to non-members and is a lovely place to eat and drink with views over the bay and out to sea. Falmouth town has an excellent and diverse selection of restaurants and bars and an eclectic mixture of shops together with quality galleries showcasing local talent. Nearby train stations (Falmouth Town and Penmere Halt) provide a convenient link to the mainline at Truro, for Exeter and London, Paddington. Falmouth Docks and Pendennis Shipyard are major contributors to the town's economy and along with Falmouth University (with campuses in Falmouth and Penryn) and Falmouth Marine School, specialising in traditional and modern boat building, marine engineering and environmental science, ensure an all-year-round vibrant community.



**LOCATION CONT...** There are five primary schools and one secondary school in the town and another in Penryn, as well as highly regarded independent preparatory and senior schools in Truro. Falmouth boasts the third deepest natural harbour in the world and is renowned for its maritime facilities which offer some of the best boating and sailing opportunities in the country. Falmouth is consistently ranked as one of the top five places to live in the UK.

**ACCOMMODATION IN DETAIL** (ALL MEASUREMENTS ARE APPROXIMATE) Through the front door into the...

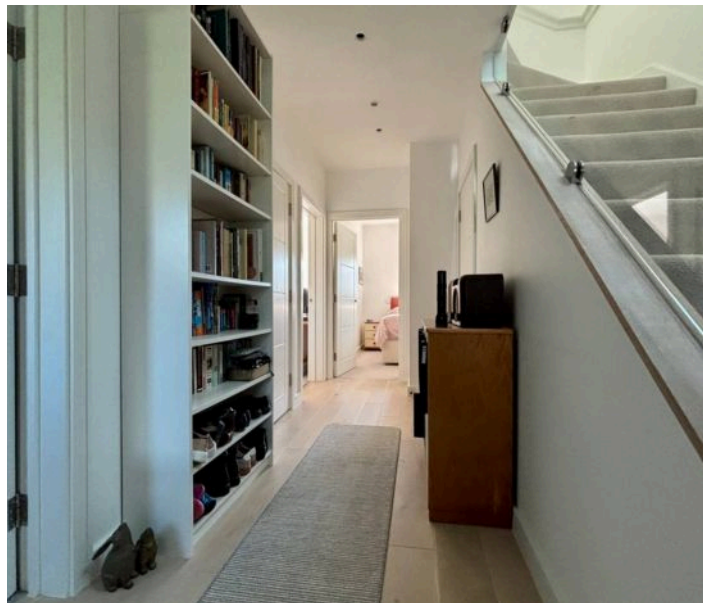
**HALLWAY** - Stairs to the first floor. Doors to each of the three bedrooms and family shower room. Due to this property being designed as an “upside down home” we will start upstairs on the first floor.

### FIRST FLOOR

**OPEN PLAN LIVING/KITCHEN/DINING ROOM** - 28' 8" (8.75m) x 18' 11" (5.79m) reducing to 8' 10" (2.71m) At the top of the stairs you are welcomed into the main living space with a high ceiling and huge windows that flood the whole room with natural light. Wood flooring with underfloor heating. There are defined areas for seating, dining and kitchen. The kitchen is modern with base and eye level units with white fronted door and drawers. The grey worktop compliments the units and is extensive and also incorporates a breakfast bar. There are many built-in appliances that include fridge, freezer, dishwasher, high level oven, hob with extractor over and washing machine. The seating and dining areas are in the widest part of the room and have glorious views. Bi-fold doors lead out to the....

**TERRACE** - What an amazing area. With South and West views this raised area has a glorious vista over the golf course and countryside and makes the most of the sunshine and where one can watch the sun set. Glass balustrade and chrome rail, composite anti-slip decking. Lighting and power points.

**CLOAKROOM/WC** -6' 8" x 3' 6" (2.02m x 1.06m) From the stairwell a corridor gives access to the upstairs WC where you will also find a cupboard that houses the mechanical ventilation system.



















## GROUND FLOOR

### HALLWAY

Large under stair cupboard housing the pressurised hot water tank.

### BEDROOM ONE

10' 0" (3.05m) x 8' 6" (2.61m) increasing to 9' 4" (2.86m) Window to the rear. Underfloor heating. Built-in wardrobe. Door to....

### EN SUITE

10' 4" x 4' 8" (3.16m x 1.42m)

Very stylish, walk-in shower cubicle with plumbed shower, WC, hand wash basin on vanity unit. Obscure window to the rear. Chrome ladder style heated towel radiator. Fully tiled walls and floor with underfloor heating.

### BEDROOM TWO

11' 6" (3.51m) increasing to 13' 9" (4.21m) x 8' 11" (2.73m) Fully glazed door to the rear. Underfloor heating. Built-in wardrobe.

### BEDROOM THREE

9' 1" x 7' 7" (2.77m x 2.32m)

Window to the front. Under floor heating. Built-in wardrobe.

### FAMILY SHOWER ROOM

8' 10" x 6' 6" (2.69m x 1.97m)

Again very stylish, walk-in shower cubicle with plumbed shower, WC, hand wash basin on vanity unit. Obscure window to the side. Chrome ladder style heated towel radiator. Fully tiled walls and floor with underfloor heating.











**FRONT GARDEN** - To the front there is parking for three vehicles and no passing traffic. A small front garden and access to the house and also the garage. Paths lead to the rear from both sides of the property.

**REAR - GARDEN** The rear garden is petite but lovely. Stone patio slabs with seating area and a walk straight onto the golf course and surrounding countryside.

**GARAGE** - 17' 1" x 11' 0" (5.21m x 3.37m) Electric vehicular access door from the driveway. Utility area to the rear. Electric, lighting and water feed. Electric vehicle charge point. Storage battery for solar panels.

**DRIVEWAY PARKING** for 3 cars

**DEVELOPMENT/ESTATE CHARGES** - Approximately £200 half yearly for private road and small common parts, however actual budget not yet set.

Council Tax band: E

Tenure: Freehold

EPC Energy Efficiency Rating: A

**AGENTS NOTE** - A Fine Example of Eco-Efficient Modern Living. This outstanding eco-efficient home has been built to an exceptional standard, offering a perfect blend of contemporary design and sustainable living. Designed with low energy costs in mind, it presents a rare opportunity to enjoy modern comforts with minimal environmental impact. Ideally situated just minutes from the stunning Swanpool Beach and picturesque coastline, residents will have direct access to an abundance of outdoor activities. Whether it's paddleboarding, kayaking, hiking, snorkelling, or other water sports, this location is a paradise for nature lovers and adventure seekers alike.

LED lighting throughout the house. Mechanical ventilation & heat recovery system. Wired internet cable in living room & all bedrooms. TV points in all bedrooms. Remote controlled electric blinds in living room.

**SERVICES** Mains electricity, water & drainage





GROUND FLOOR  
738 sq.ft. (68.5 sq.m.) approx.



1ST FLOOR  
502 sq.ft. (46.6 sq.m.) approx.



TOTAL FLOOR AREA: 1239 sq.ft. (115.2 sq.m.) approx.

Whilst every attempt has been made to ensure the accuracy of the floorplan contained here, measurements of doors, windows, rooms and any other items are approximate and no responsibility is taken for any error, omission or mis-statement. This plan is for illustrative purposes only and should be used as such by any prospective purchaser. The services, systems and appliances shown have not been tested and no guarantee as to their operability or efficiency can be given.  
Made with Metropix ©2025





## Heather & Lay

3 Church Street, Falmouth - TR11 3DN

01326 319767 • [sales@heather-lay.co.uk](mailto:sales@heather-lay.co.uk) • [www.heather-lay.co.uk/](http://www.heather-lay.co.uk/)

These particulars are set out as a general outline in accordance with the Property Misdescriptions Act (1991) only for the guidance of intending purchasers or lessees, and do not constitute any part of an offer or contract. Details are given without any responsibility, and any intending purchasers, lessees or third parties should not rely on them as statements or representations of fact, but must satisfy themselves by inspection or otherwise as to the correctness of each of them. We have not carried out a structural survey and the services, appliances and specific fittings have not been tested. All photographs, measurements, floor plans and distances referred to are given as a guide only and should not be relied upon for the purchase of carpets or any other fixtures or fittings. Gardens, roof terraces, balconies and communal gardens as well as tenure and lease details cannot have their accuracy guaranteed for intending purchasers. Lease details, service ground rent (where applicable) are given as a guide only and should be checked and confirmed by your solicitor prior to exchange of contracts.



Heather & Lay  
*The local property experts*