

7 Bloomsbury Crescent, Bolton

£350,000 Leasehold

Four bedroom detached town house • Three bathrooms • Bedroom one with en-suite • Two reception rooms • Detached garage conversion currently being used as a gym • Cul de sac position and very private • High gloss white kitchen with integrated appliances • Driveway for one vehicle • Close to great schools both primary and secondary • Walking distance to local mosques

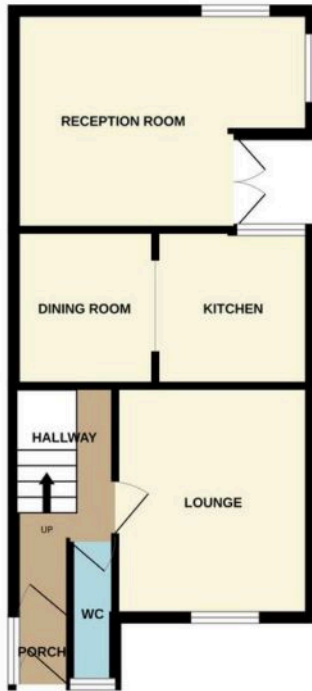




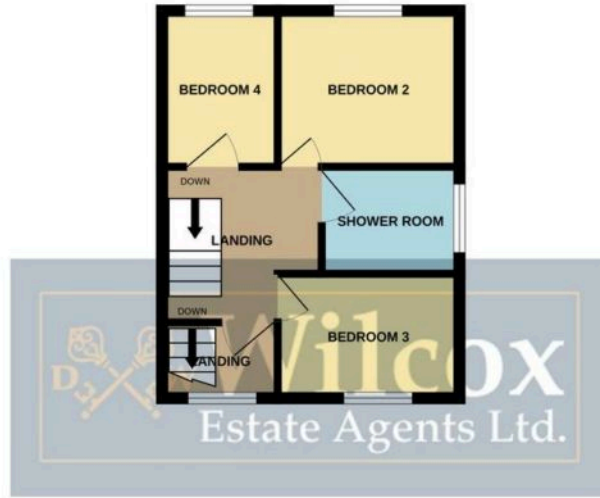
This impeccable 4-bedroom detached house located in a peaceful cul-de-sac offers the epitome of modern living. The beautifully designed property boasts three bathrooms, including an ensuite in the primary bedroom for added convenience. Enter the home into a welcoming ambience featuring two spacious reception rooms ideal for both relaxing evenings and entertaining guests. The detached garage conversion has been transformed into a gym, perfect for fitness enthusiasts or those seeking a tranquil space for workouts.

The property's location ensures utmost privacy, providing a serene retreat from the hustle and bustle of daily life.

GROUND FLOOR



1ST FLOOR



2ND FLOOR



Whilst every attempt has been made to ensure the accuracy of the floorplan contained here, measurements of doors, windows, rooms and any other items are approximate and no responsibility is taken for any error, omission or mis-statement. This plan is for illustrative purposes only and should be used as such by any prospective purchaser. The services, systems and appliances shown have not been tested and no guarantee as to their operability or efficiency can be given.
Made with Metropix ©2025

