



101 Wordsworth Street, Hove

Offers Over £525,000

**MANSELL
McTAGGART**
Trusted since 1947

101 Wordsworth Street

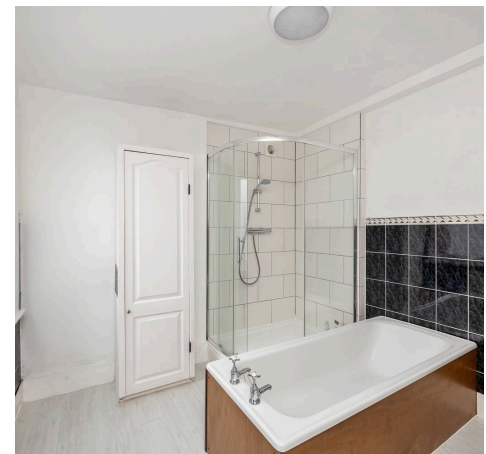
Hove, Hove

This two bedroom mid-terraced house in Poets Corner represents a blend of comfort, convenience, and potential for further enhancement.

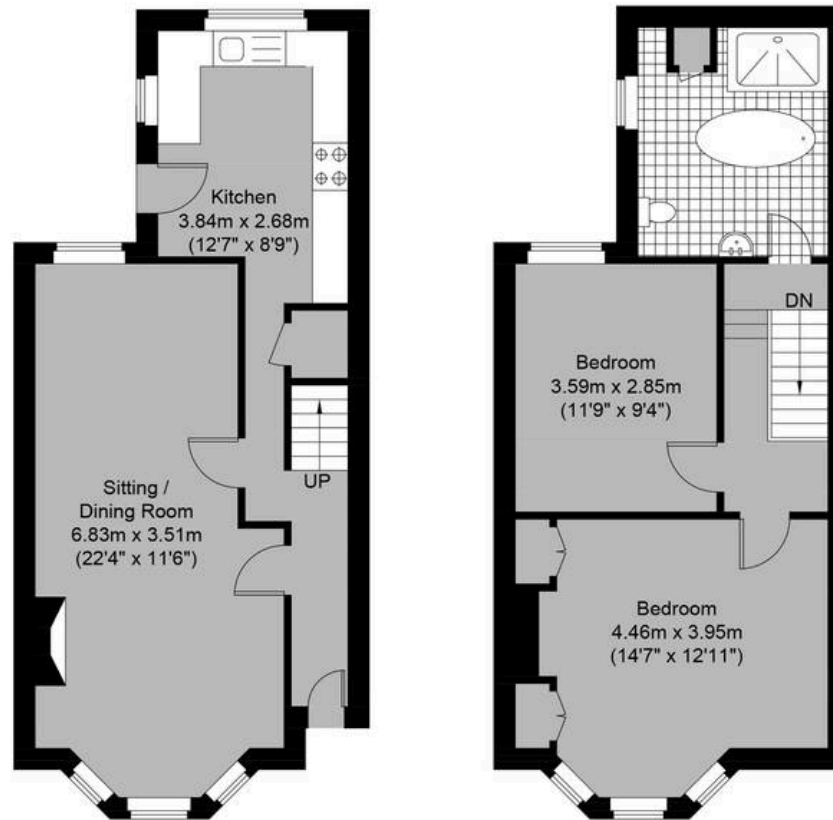
Council Tax band: C

Tenure: Freehold

- Two Double Bedroom Terraced Home
- Offered To Market With No Onward Chain
- Well Maintained Throughout
- Ideal Location In The Heart Of Poets Corner
- Potential To Enlarge And Improve Subject To The Relevant Consents
- Attractive, Low Maintenance Rear Garden
- Exclusive To Mansell McTaggart
- Large Family Bathroom
- Open Plan Living Room Diner With Separate Well Appointed Kitchen
- Close To The Train Station, Local Shops, Good Schools And The Seafront!



Approximate Gross Internal Area= 80.0 sq m / 861.10 sq ft



Wordsworth Street

Ground Floor
Approximate Floor Area
427.00 sq ft (39.67 sq m)

First Floor
Approximate Floor Area
434.10 sq ft (40.33 sq m)

**MANSELL
McTAGGART**
— Trusted since 1947 —

Illustration for identification purposes only, measurements are approximate, not to scale.
© Mansell McTaggart



Mansell McTaggart Hove

170 Church Road, Hove - BN3 2DJ

01273 044929

hove@mansellmctaggart.co.uk

www.mansellmctaggart.co.uk/branch/hove/

