



Bickerton Road, N19

Price: £1600pcm

**DAVID
ANDREW**

your
most
valuable
asset

A stunning and generously proportioned studio apartment, set on the top floor of a characterful period conversion, ideally located between on the edge of Dartmouth Park.

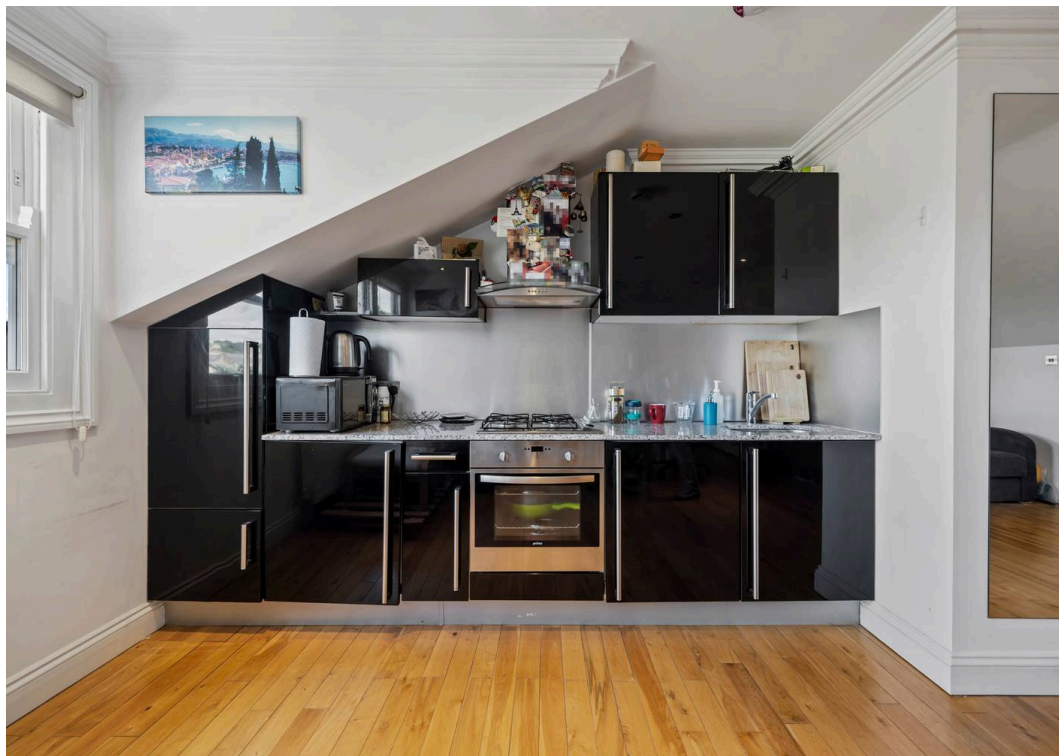
Thoughtfully arranged to maximise space and light, the property features a **bright and expansive open-plan living area** with **wood flooring** and **double-glazed windows** offering far-reaching views. The **modern fitted kitchen** provides excellent functionality, while the **contemporary bathroom** includes a full shower. There is also **ample built-in storage** throughout, making the space both practical and stylish.

Offered chain-free, this apartment is perfectly situated close to the excellent transport links of **Archway Underground Station** and within walking distance of **Dartmouth Park and Waterlow Park**, and the open green spaces of **Hampstead Heath**. A wide variety of shops, cafes, and local amenities are all within easy reach, along with excellent **bus connections** across North London.

Council Tax band: A EPC Energy Efficiency Rating: C

- Large Studio Apartment
- Open Plan
- Top Floor
- Fully Fitted Kitchen
- Wood Flooring
- Modern Bathroom
- Excellent Local Amenities
- Moments from Archway Underground (Northern Line)
- Offered Part Furnished
- Available 23 August







Bickerton Road, N19


Approximate Gross Internal Area = 399 sq ft / 37.1 sq m

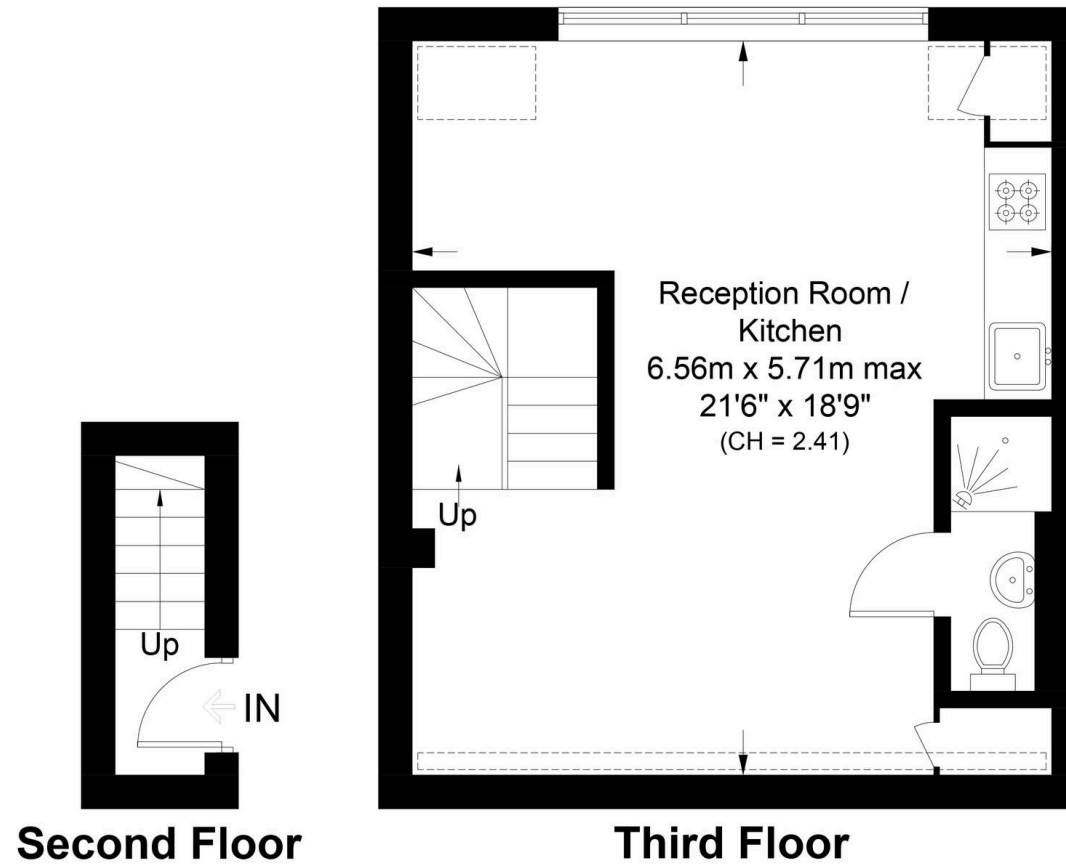
Reduced Headroom = 29 sq ft / 2.7 sq m

Total = 428 sq ft / 39.8 sq m

**DAVID
ANDREW**

your
most
valuable
asset

 = Reduced headroom below 1.5m / 5'0



Archway Office

671 Holloway Road
London, N19 5SE

T (0)20 7619 3750

Highbury Office

90 Highbury Park
London, N5 2XE

T (0)20 7354 9111

Finsbury Park Office

167 Stroud Green Road
London, N4 3PZ

T (0)20 7281 2000

Property Management Office

235 Blackstock Road
London, N5 2LL

T (0)20 7354 9222

scan to book
a viewing



**Certified
Property
Measurer**

This plan is for layout guidance only. Not drawn to scale unless stated. Windows and door openings are approximate. Whilst every care is taken in the preparation of this plan, please check all dimensions, shapes and compass bearings before making any decisions reliant upon them. (ID1105779)



has been exercised in the
of these particulars,
out the property must not be
as representations of
fact. Prospective applicants
and rely upon their own
id those of professional
s. David Andrew Estates
bility for any error contained
in these particulars.

