



Lamb Close, Northolt
£55,000



Lamb Close

Northolt

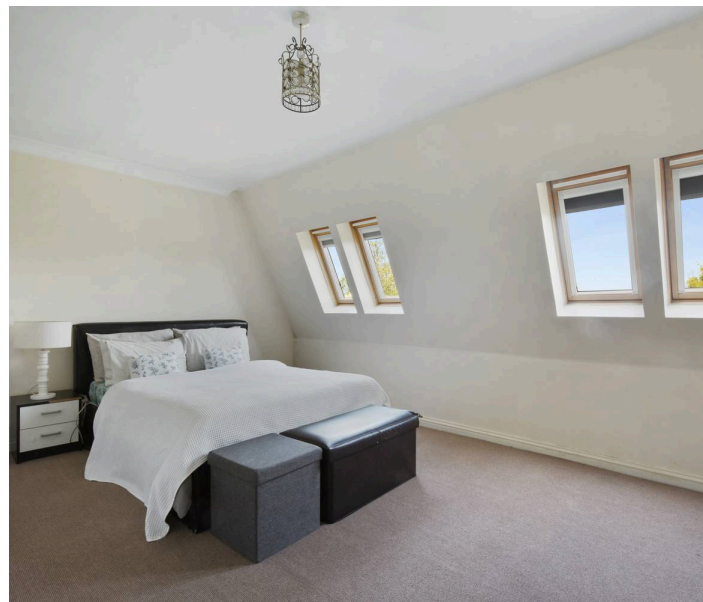
- Shared Ownership 25%
- Long Lease: 167 Years Remaining
- Great Transport Links
- Residents Parking
- Option to Purchase 100% Share - £220,000
- Service Charge: £171 pcm
- Ground Rent: £0 pa
- Rent: £714 pcm

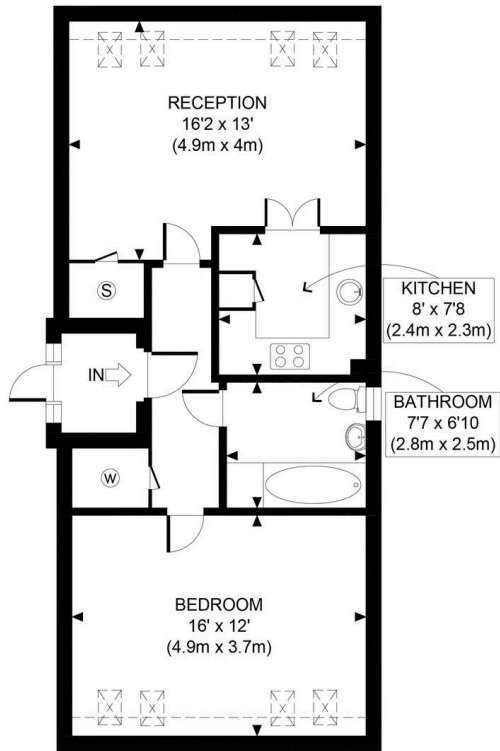
Council Tax band: B

Tenure: Leasehold

EPC Energy Efficiency Rating: C


EPC Environmental Impact Rating: D





THIRD FLOOR
GROSS INTERNAL
FLOOR AREA 629 SQ FT



<p>APPROX. GROSS INTERNAL FLOOR AREA 629 SQ FT / 58 SQM</p>	<p>Lamb Close</p>
<p>Disclaimer: Floor plan measurements are approximate and are for illustrative purposes only. While we do not doubt the floor plan accuracy and completeness, you or your advisors should conduct a careful, independent investigation of the property in respect of monetary valuation</p>	<p>date 29/04/25</p>
	<p>photoplan </p>



SAB Estates

236-238 Ruislip Road, Greenford - UB6 9RS

020 8575 2929 • info@sabestates.com • www.sabestates.com/