



61 Ropewalk Court Upper College Street, Nottingham

£1,196 pcm

Two Double Bedrooms • Modern Kitchen • Bills Inclusive Option Available • One Private Secure Parking Space •
Walking Distance To The City Centre • Walking Distance To Local Bus Routes • Perfect For Students Or Sharers •
Furnished Apartment • Available 1st August 2025





| Two Double Bedrooms | Furnished Apartment | Close To
City Centre | Parking Included | Bills Inclusive Option
Available | Available 1st August 25 |
Council Tax band: D

EPC Energy Efficiency Rating: B

EPC Environmental Impact Rating: C

- Two Double Bedrooms
- Modern Kitchen
- Bills Inclusive Option Available
- One Private Secure Parking Space
- Walking Distance To The City Centre
- Walking Distance To Local Bus Routes
- Perfect For Students Or Sharers
- Furnished Apartment
- Available 1st August 2025





| Two Double Bedrooms | Furnished Apartment | Close To City Centre |
Parking Included | Bills Inclusive Option Available | Available 1st August 25 |
Council Tax band: D

EPC Energy Efficiency Rating: B

EPC Environmental Impact Rating: C



- Two Double Bedrooms
- Modern Kitchen
- Bills Inclusive Option Available
- One Private Secure Parking Space
- Walking Distance To The City Centre
- Walking Distance To Local Bus Routes
- Perfect For Students Or Sharers
- Furnished Apartment
- Available 1st August 2025



| Two Double Bedrooms | Furnished
Apartment | Close To City Centre |
Parking Included | Bills Inclusive
Option Available | Available 1st August
25 |

Council Tax band: D

EPC Energy Efficiency Rating: B

EPC Environmental Impact Rating: C



- › Two Double Bedrooms
- › Modern Kitchen
- › Bills Inclusive Option Available
- › One Private Secure Parking Space
- › Walking Distance To The City Centre
- › Walking Distance To Local Bus Routes
- › Perfect For Students Or Sharers
- › Furnished Apartment
- › Available 1st August 2025



Council Tax band: D

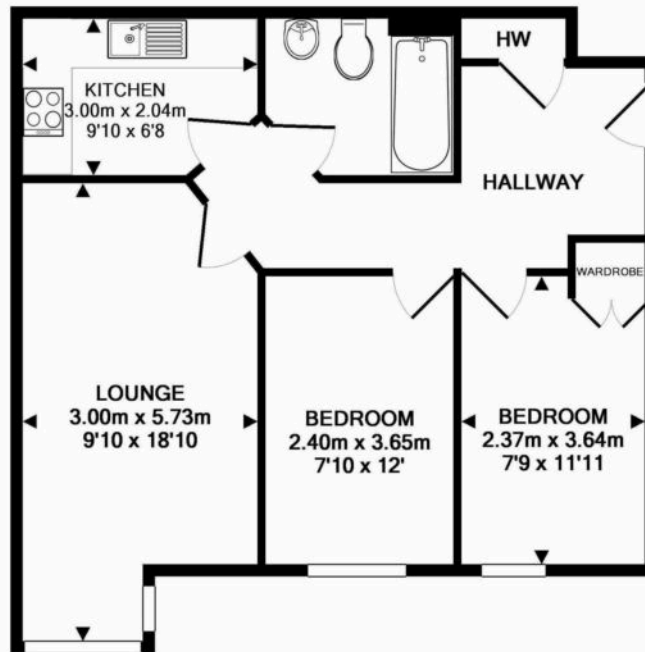
EPC Energy Efficiency Rating: B

EPC Environmental Impact Rating: C





61 Ropewalk Court Upper College Street,
Nottingham



TOTAL APPROX. FLOOR AREA 53.8 SQ.M. (579 SQ.FT.)

Whilst every attempt has been made to ensure the accuracy of the floor plan contained here, measurements of doors, windows, rooms and any other items are approximate and no responsibility is taken for any error, omission, or mis-statement. This plan is for illustrative purposes only and should be used as such by any prospective purchaser. The services, systems and appliances shown have not been tested and no guarantee as to their operability or efficiency can be given
Made with Metropix ©2016

You can include any text here. The text can be modified upon generating your brochure.



You can include any text here. The text can be modified upon generating your brochure.