



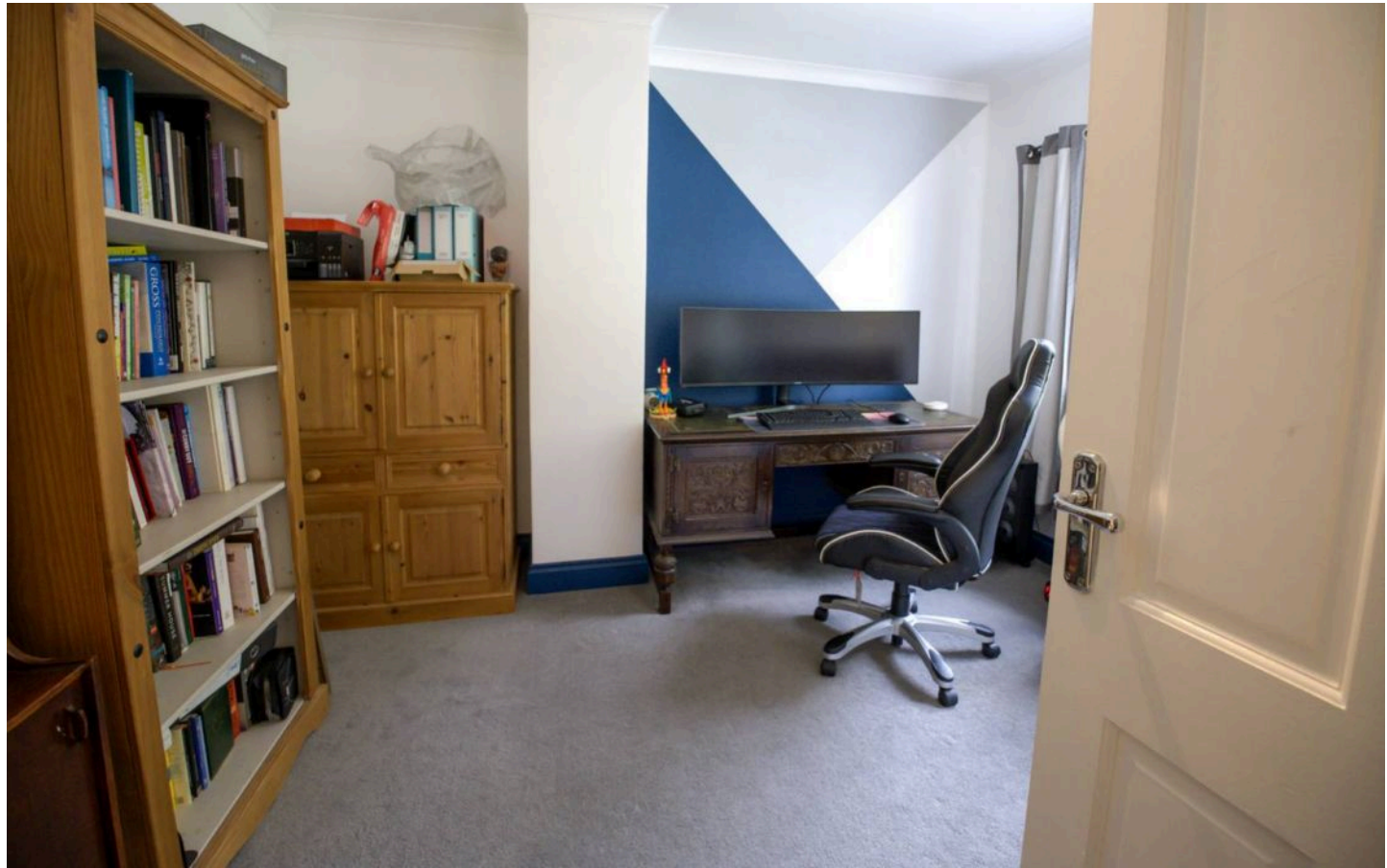
St Servan, Langley Park, St Saviour
£690,000

BROADLANDS
FINDING YOU A HOME SINCE 1972

St Servan, Langley Park

St Saviour, Jersey

- Four bedroom family home
- 2 bathrooms
- Garage and parking and on street visitor parking
- Tiered garden
- Walking distance to Town and Schools
- No onward chain
- Great size 1,612 sq ft
- Sole agents
- Well presented throughout
- Call Doug on 07700702585 or doug@broadlandsjersey.com



St Servan, Langley Park

St Saviour, Jersey

- Four bedroom family home
- 2 bathrooms
- Garage and parking and on street visitor parking
- Tiered garden
- Walking distance to Town and Schools
- No onward chain
- Great size 1,612 sq ft
- Sole agents
- Well presented throughout
- Call Doug on 07700702585 or doug@broadlandsjersey.com



St Servan, Langley Park

St Saviour, Jersey

This well presented 4 bedroom 2 bathroom house is ideal for a busy family, with only a short walk to Town and within close proximity to primary and secondary schools. The property is over 1600 sq ft. On the ground floor the property comprises of a generous kitchen/diner with a modern kitchen and full range of integrated appliances and patio doors to the garden and a separate lounge. Upstairs you have 3 double bedrooms and a single/study and two bathrooms, one being an En-suite. A two tiered private garden ideal for relaxing on a summers day. With a single garage and an additional parking space, with the option of creating another in the front garden as many of the neighbors have and ample street parking for visitors. Light and airy throughout and in close proximity to a local shop and regular Bus route. Broadlands are delighted to be sole agents and there is no onward chain.



**Living**

Great size kitchen/diner. Separate lounge.

Sleeping

Four bedrooms, 3 double and a single/study. Two bathrooms, 1 being an En-suite.

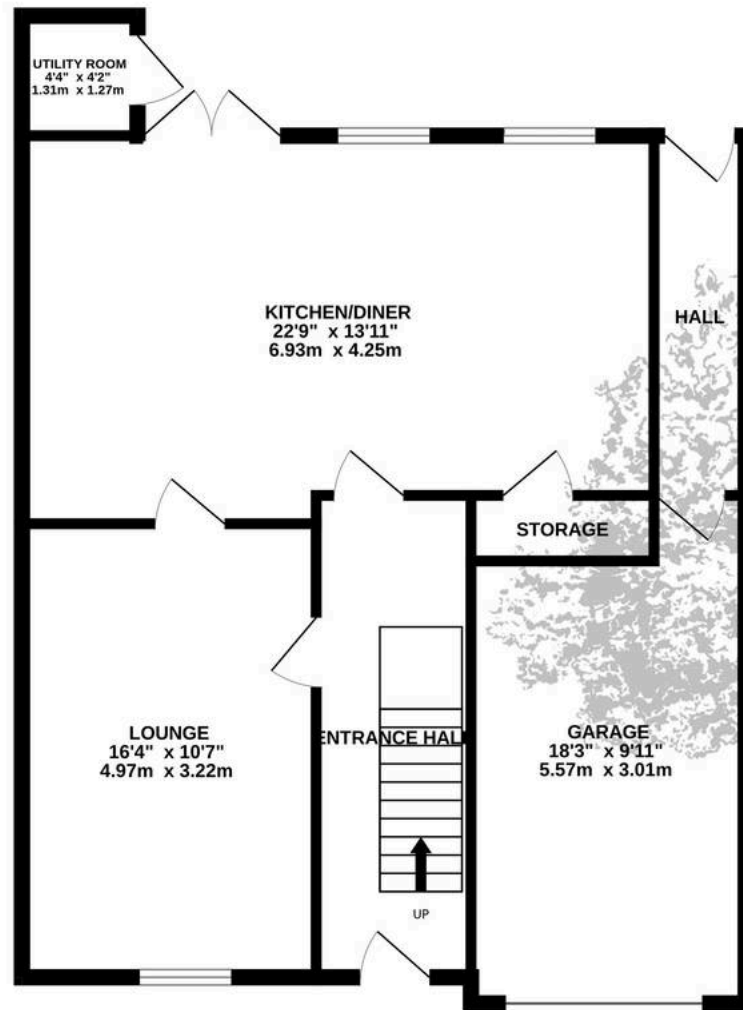
Services

All main services. Double glazing and electric boiler/heating.

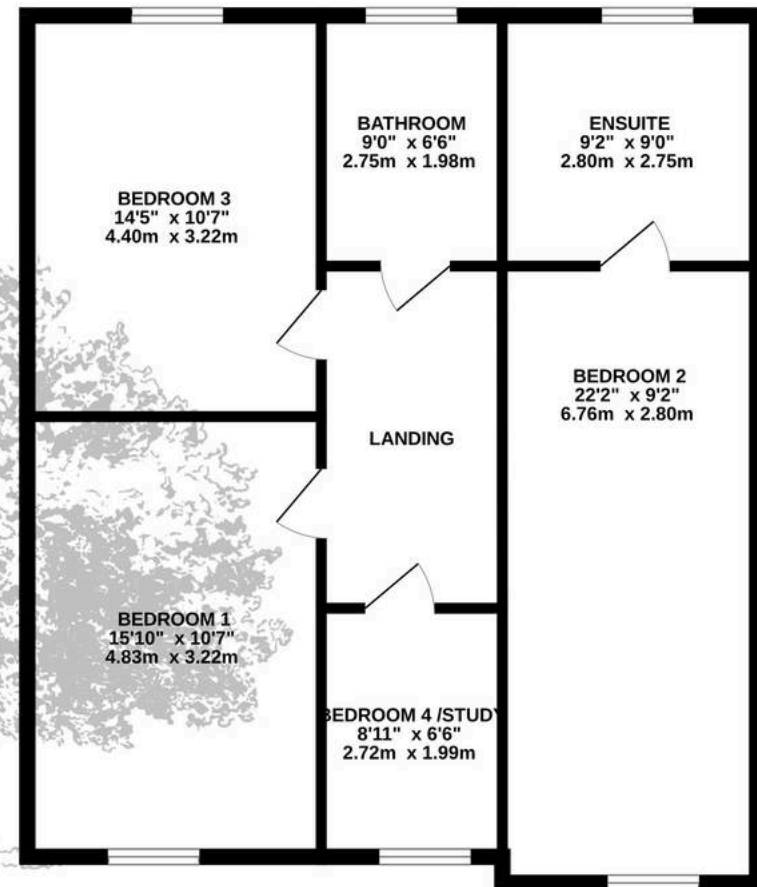




GROUND FLOOR
815 sq.ft. (75.7 sq.m.) approx.



1ST FLOOR
803 sq.ft. (74.6 sq.m.) approx.



TOTAL FLOOR AREA : 1618 sq.ft. (150.3 sq.m.) approx.

Whilst every attempt has been made to ensure the accuracy of the floorplan contained here, measurements of doors, windows, rooms and any other items are approximate and no responsibility is taken for any error, omission or mis-statement. This plan is for illustrative purposes only and should be used as such by any prospective purchaser. The services, systems and appliances shown have not been tested and no guarantee as to their operability or efficiency can be given.
Made with Metropix ©2025



Broadlands

Broadlands Estates, Library Place - JE2 3NL

01534 880770 • enquiries@broadlandsjersey.com • www.broadlandsjersey.com/

BROADLANDS

FINDING YOU A HOME SINCE 1972