



25a North Drive, Beaconsfield

Guide Price £775,000

Ashington Page

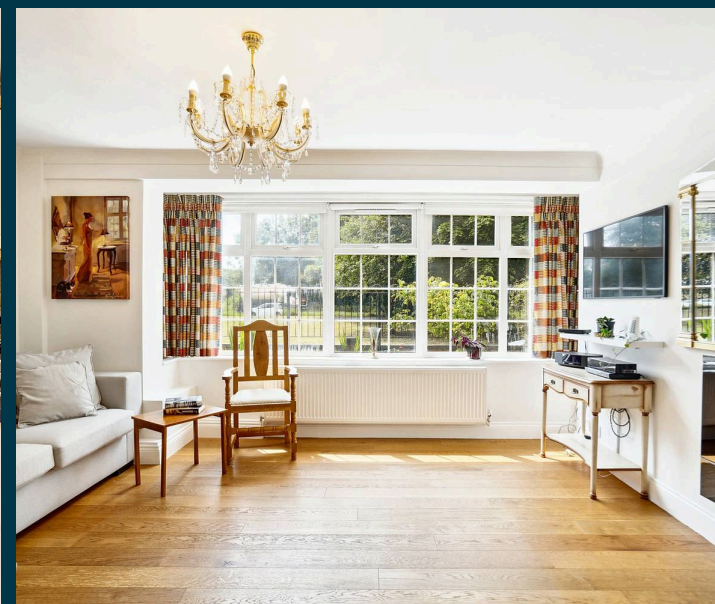
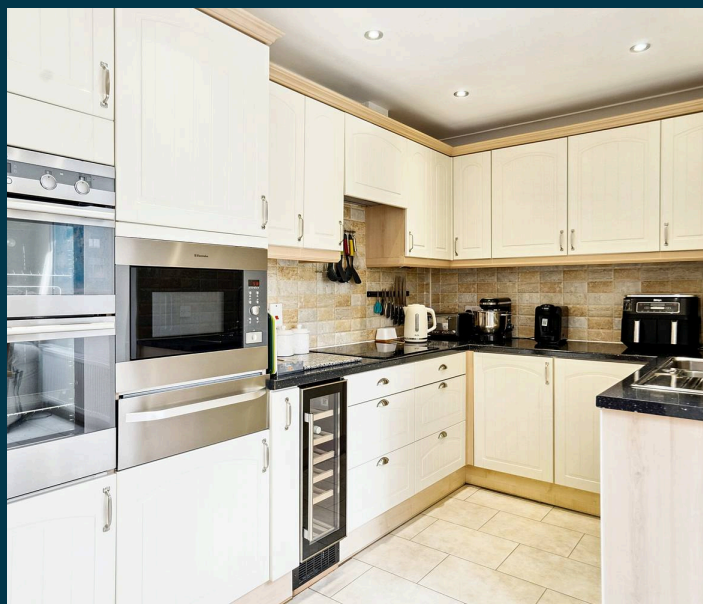
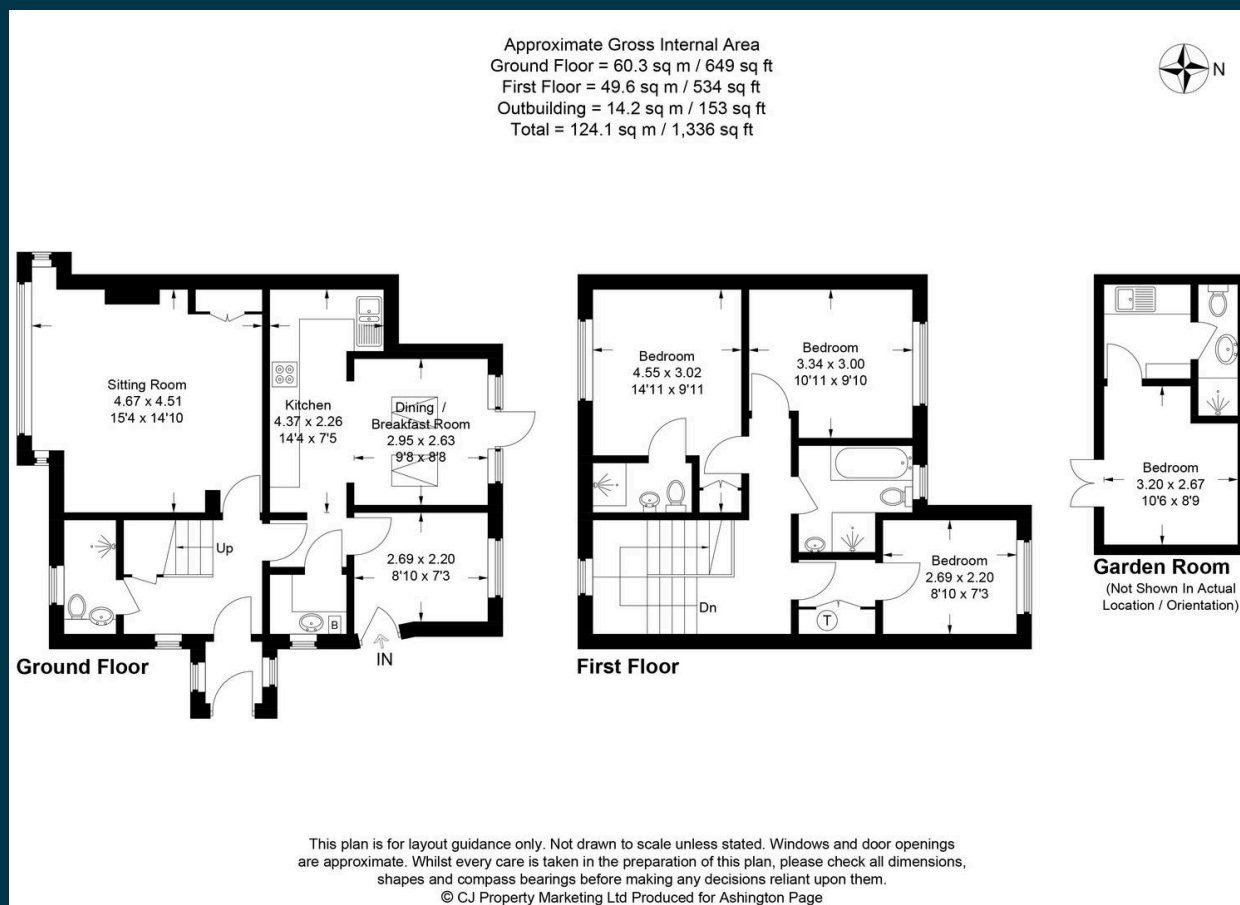
The Old Post Office has delightful nods to its heritage and offers a blend of historical charm and contemporary living. This large semi-detached property presents thoughtfully designed interiors, versatile living spaces, and a beautifully landscaped garden, making it an ideal family home. The garden is an absolute delight! French doors from the kitchen-diner open onto an expansive raised terrace, enclosed with railings and offering picturesque views of the mature garden.

EPC: D

CTB: E

Tenure: F

These particulars are for guidance only. They are prepared and issued in good faith and are intended to give a fair summary of the property. Any description should not be relied on as a statement or representation of fact or that the property, or its services, are in good condition. The photographs show only certain parts of the property at the time they were taken. Any areas, measurements or distance given are approximate only. Any reference to alterations to, or use of, any part of the property is not a statement that any necessary planning, building regulations or other consent has been obtained. These matters must be verified by an intending purchaser. All statements contained in these particulars in relation to the property are made without responsibility of Ashington Page or its clients. Neither Ashington Page (nor any joint agents) nor any of their employees has any authority to make or give any representation or warranty whatsoever in relation to the property



01494 680018
info@ashingtonpage.co.uk
www.AshingtonPage.co.uk