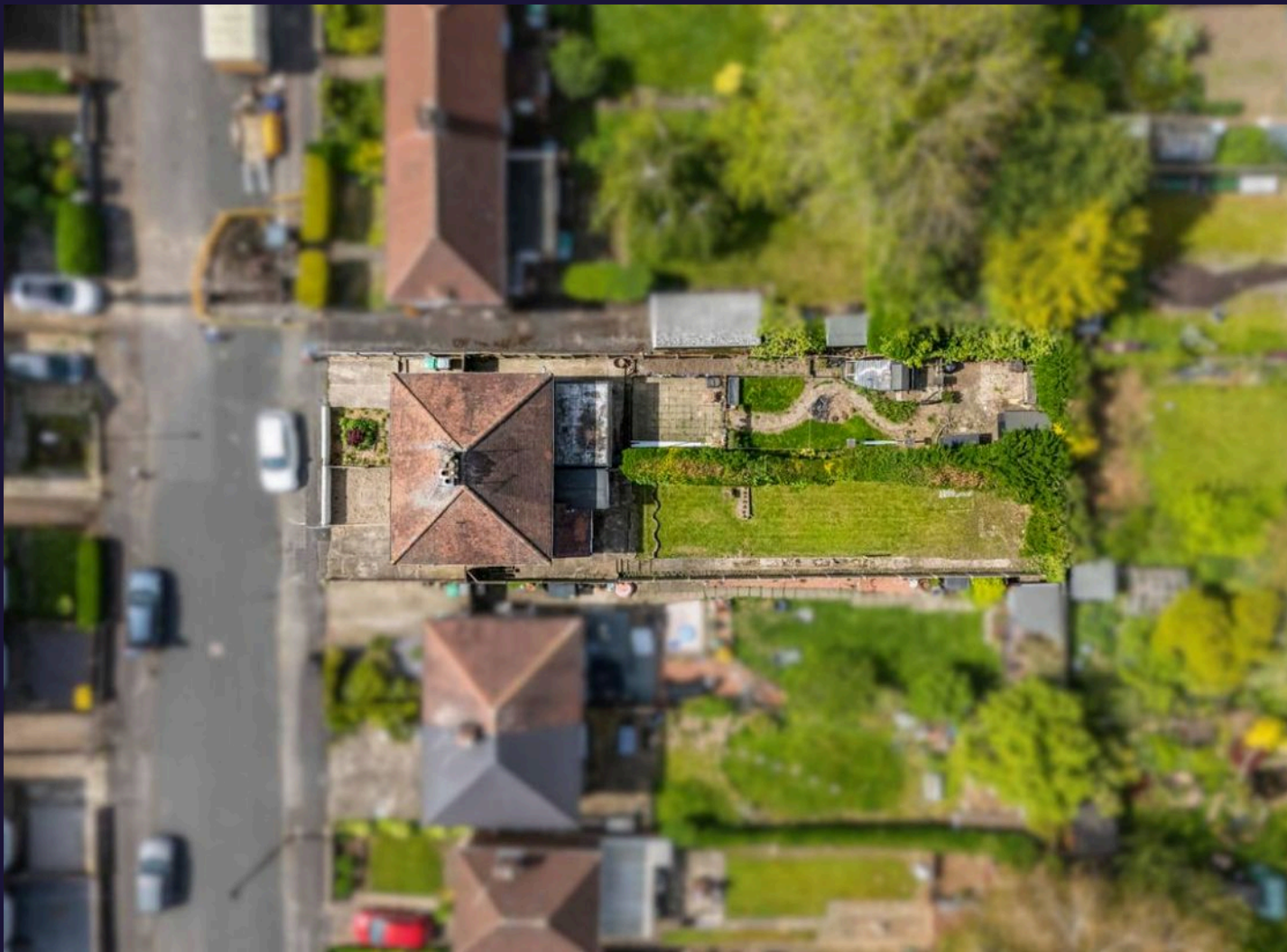




Plantation Road, Nottingham
£220,000

 **Comfort
Estates**



This traditional, two-bedroom semi-detached home is presented to the market with no upward chain and is available to view now. The house is situated in the ever-popular area of Wollaton with a range of amenities nearby and within walking distance to Wollaton Hall and Deer Park. With the potential to be turned into a three bedroom home, this is an opportunity not to be missed!

This property is an ideal purchase for anyone seeking a house requiring no work before moving in, but offering great potential to make it your own home. A house with bright and spacious accommodation throughout. The ground floor comprises two, good-sized reception rooms including an open-plan kitchen diner with scope to extend subject to planning permission. On the first floor, there are two well-proportioned bedrooms serviced by a family bathroom with a modern three-piece suite.

- Potential for 3 Bedrooms
- Private Landscaped Garden
- Two Double Bedrooms
- No Upward Chain
- Close To Wollaton Hall
- Easy Access To M1
- EPC: D



**Living Room**

Bright and spacious living room with bay window to front.

Dining Room

Good sized dining room with laminate flooring, open plan with kitchen and access to rear garden

Kitchen

L-shaped kitchen lined with wall and base units, laminate flooring and views to the rear garden.

Master bedroom

Double bedroom with carpeted flooring and window to front aspect.

Bedroom 2

Second generous bedroom with carpeted flooring and window to rear aspect

Bathroom

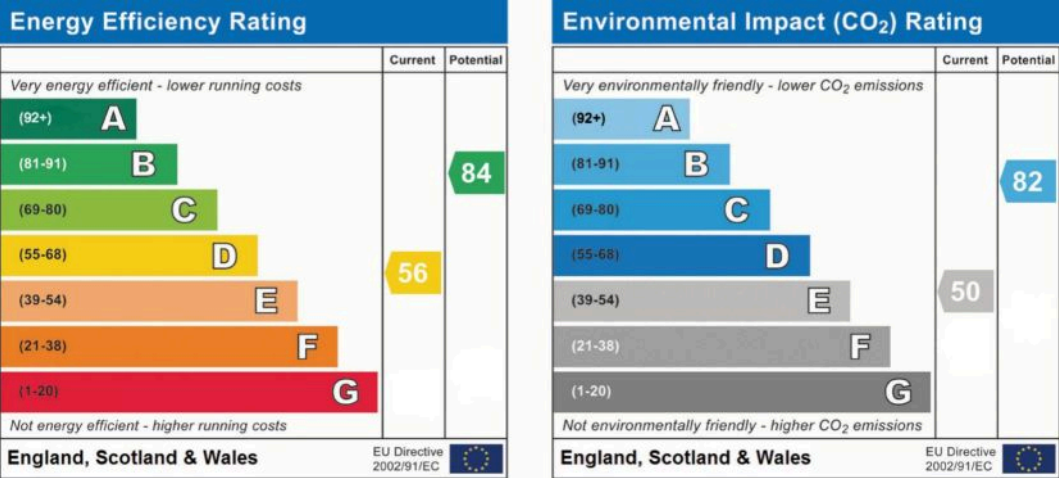
Family bathroom with tiled flooring and walls. Three piece suite comprising panel bath with shower over, wash hand basin, and W.C

Externally

The house boasts great charm and curb appeal to the front, and a huge garden to the rear creating a stunning outdoor space for family and friends.









Comfort Estates

Comfort Estates, 47 Derby Road - NG1 5AW

0115 9338997 • info@comfortestates.co.uk • www.comfortestates.co.uk