



Ground Floor Flat, 275 Kingsway, Hove

Guide Price £425,000

**MANSELL
McTAGGART**
Trusted since 1947

Ground Floor Flat

275 Kingsway, Hove

GUIDE PRICE £425,000 - £450,000 Presenting a rare opportunity to own a distinguished residence by the beach, this beachfront maisonette located in the heart of Hove effortlessly combines modern convenience with period charm.

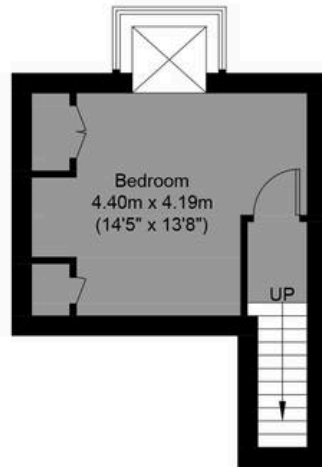
Council Tax band: C

Tenure: Leasehold

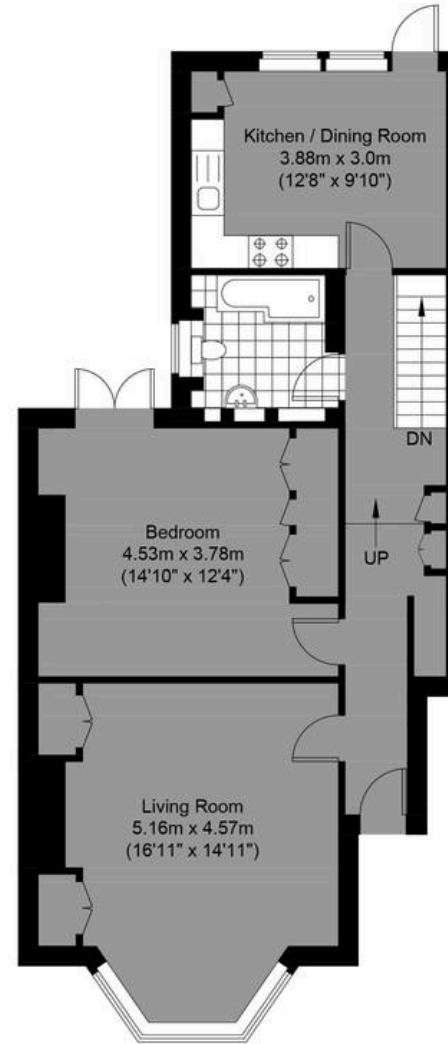
- Beachfront location close to everything Hove has to offer
- Spacious, large private garden with rear access
- Potential For Further Enlargement STPP
- Nearly 1000 Years On The Lease
- Modern kitchen with integrated appliances
- Direct garden access from the kitchen
- Period architectural features
- Contemporary bathroom
- Multiple outdoor seating areas
- Bright, airy interiors and no onward chain!



Approximate Gross Internal Area = 84.78 sq m / 912.56 sq ft



Lower Ground Floor Flat
Approximate Floor Area
181.26 sq ft (16.84 sq m)



Kingsway

Ground Floor Flat
Approximate Floor Area
731.30 sq ft (67.94 sq m)

**MANSELL
McTAGGART**
— Trusted since 1947 —

Illustration for identification purposes only, measurements are approximate, not to scale.
© Mansell McTaggart



Mansell McTaggart Hove

170 Church Road, Hove - BN3 2DJ

01273 044929

hove@mansellmctaggart.co.uk

www.mansellmctaggart.co.uk/branch/hove/

