



Waterloo Gardens Milner Square, Islington, N1 1TY
£625,000

**DAVID
ANDREW**

your
most
valuable
asset

Waterloo Gardens, Milner Square, N1 1TY

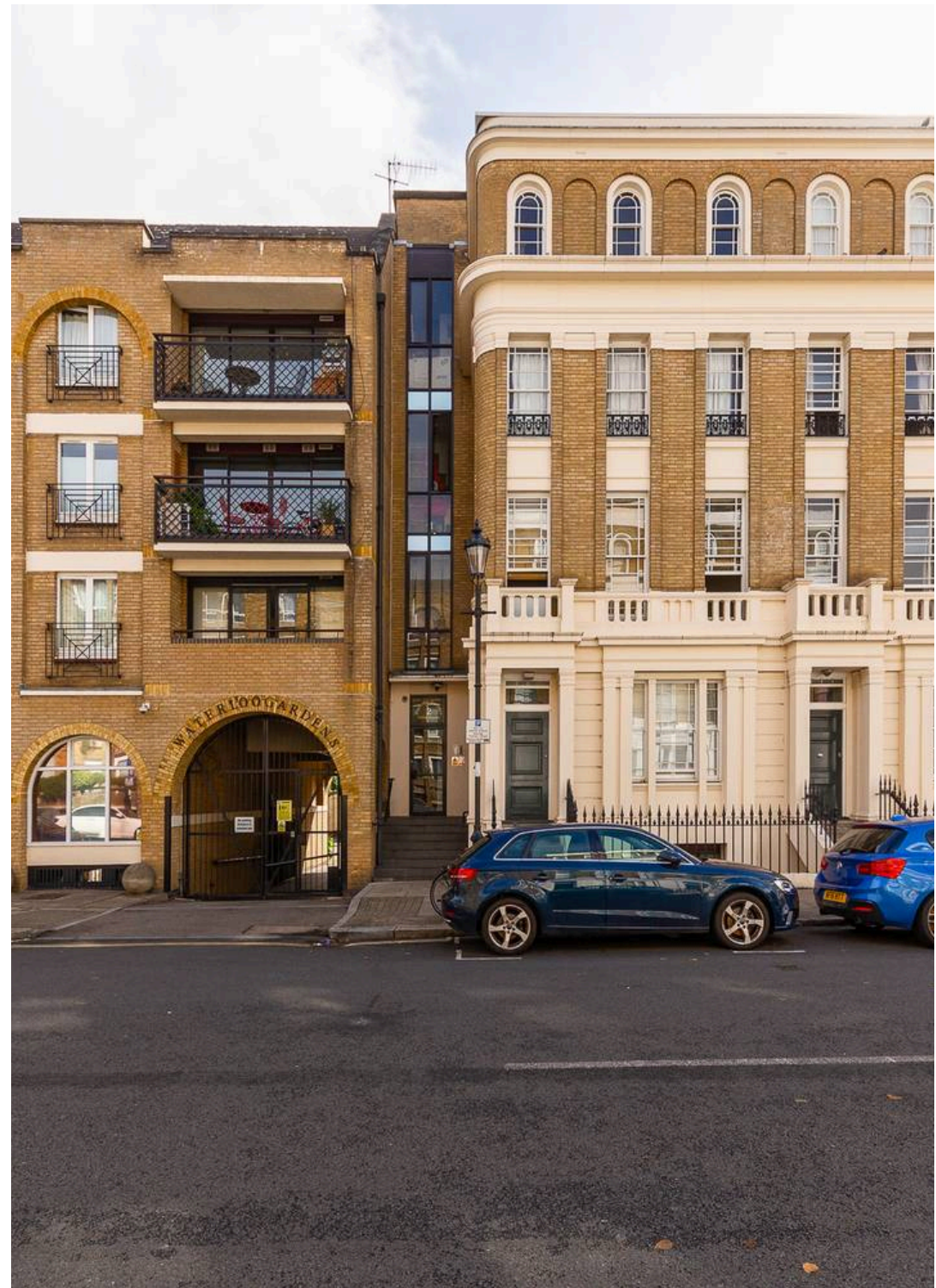
Introducing a bright and spacious one double bedroom flat situated in a sought-after development, within minutes' walk to Upper Street, Islington. The property benefits from a fully fitted kitchen and bathroom, a spacious double bedroom with built in wardrobes, a large bright open plan reception room with a Juliette balcony. Waterloo Gardens is set in a prime location, only a short walk away from Upper Street, offering a wonderful array of boutiques, cafes, parks, luxury gyms, restaurants and bars. Transport is excellent with the Northern line tube at Angel and Victoria line at Highbury & Islington. The overground at Highbury & Islington gives convenient access across London, with an abundance of bus routes at your doorstep.

Council Tax band: D

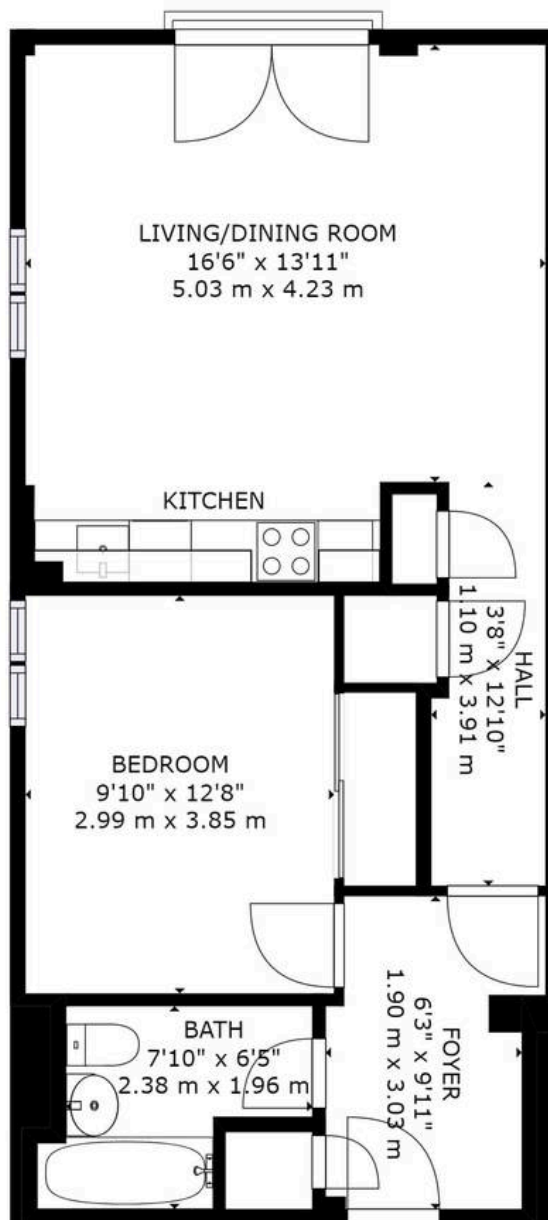
Tenure: Leasehold

EPC Energy Efficiency Rating: C

- 598 sq ft / 56 sq m Internal Living Space
- One Bedroom apartment
- Open-Plan Kitchen Living Room
- Prestigious Development
- Bright and Spacious Throughout.
- Secure gated entrance
- Fantastic Location - Upper Street at your doorstep
- Great Transport Links from Angel and Highbury & Islington







GROSS INTERNAL AREA
FLOOR 1: 598 sq ft, 56 m²
TOTAL: 598 sq ft, 56 m²

SIZES AND DIMENSIONS ARE APPROXIMATE, ACTUAL MAY VARY.

scan to book
a viewing
FLOOR 1



in these particulars.