

Brewster Gardens, W10

North Kensington

£6,000 PW

RIGBY & MARCHANT

Brewster Gardens

North Kensington

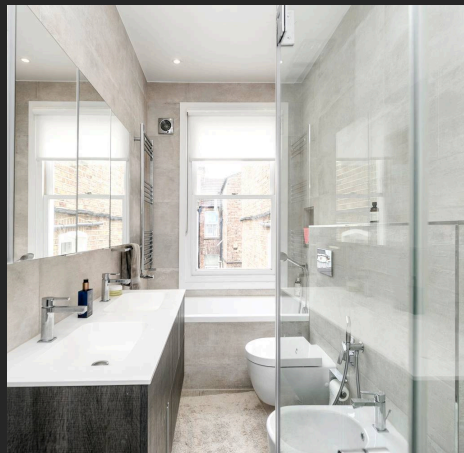
This beautifully presented four-bedroom, three-bathroom modern townhouse in North Kensington offers generous living space across multiple levels, finished to a high specification throughout. The property features two elegant reception rooms, providing flexible space for both formal entertaining and relaxed living. A bright, spacious kitchen with sleek modern fittings and ample room for dining leads directly to a private garden. The large master bedroom is bright and spacious, complete with a luxurious en-suite bathroom and built-in storage. Additional highlights include air conditioning for year-round comfort, a separate utility room for added convenience, and a strong EPC rating ensuring energy efficiency. The home is available furnished or unfurnished, making it an ideal option for a range of lifestyles.

Council Tax band: G

Tenure: Freehold

EPC Energy Efficiency Rating: D

EPC Environmental Impact Rating: E



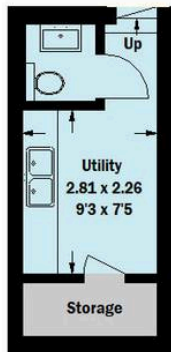
Brewster Gardens, W10

Approximate Gross Internal Area = 174.9 sq m / 1882 sq ft

Eaves = 8.2 sq m / 88 sq ft

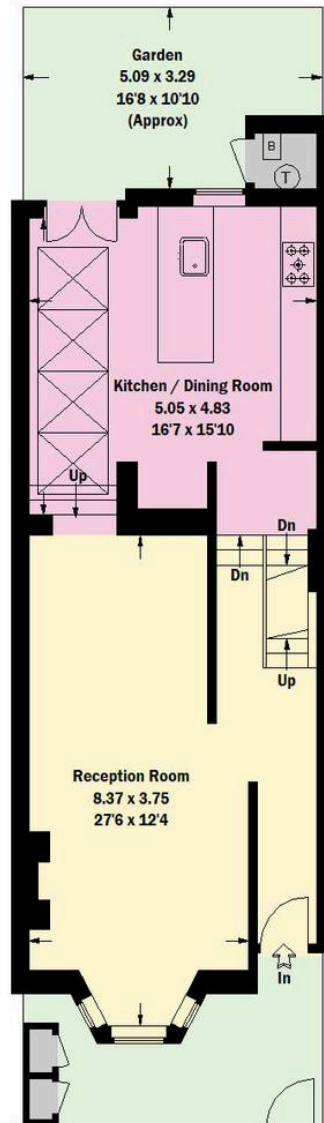
Boiler = 1 sq m / 11 sq ft

Total = 184.1 sq m / 1981 sq ft

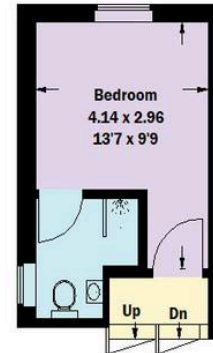


= Reduced headroom below 1.5 m / 5'0

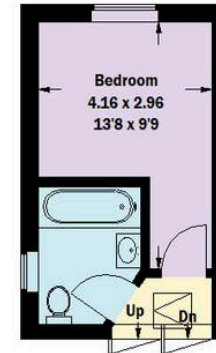
Lower Ground Floor



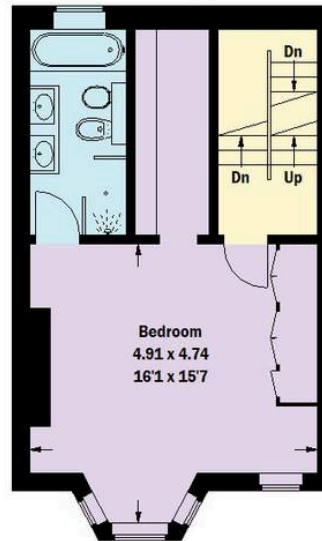
Ground Floor



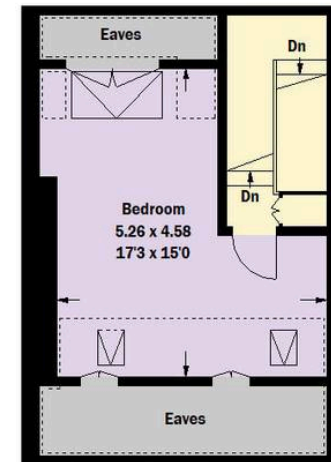
**First Floor
Landing Half**



**Second Floor
Half Landing**



First Floor



Second Floor

Whilst every attempt has been made to ensure the accuracy of the floor plan, measurements are approximate and not to scale.
No guarantee is given on the total square footage of the property quoted on the plan. Figures given are for guidance.
Plan is for illustration purposes only, not to be used for valuations.



Rigby & Marchant

115 Westbourne Studios

020 7221 7210

sales@rigbyandmarchant.co.uk

www.rigbyandmarchant.co.uk/

RIGBY &
MARCHANT