



St. John's Villas, London

Guide Price £550,000

**DAVID
ANDREW**

your
most
valuable
asset

St. John's Villas, London

Set within an elegant double-fronted Victorian conversion on one of N19's most desirable tree-lined streets, this beautifully presented two double bedroom flat occupies the raised ground floor and offers a harmonious blend of period charm, space, and access to an expansive outdoor communal garden.

The property boasts impressive ceiling heights of over 3 metres and retains many original features, including large sash windows with wooden shutters, which allow natural light to flood the interior while adding a touch of classic elegance and privacy. The flat features an integrated open-plan kitchen and dining area that flows seamlessly into a spacious living room, ideal for both relaxation and entertaining. A three-piece tiled modern bathroom, along with two well-sized double bedrooms.

Residents also enjoy access to a substantial, mature communal garden, extending approximately 68 ft by 37 ft.

Located on St John's Villas, a quiet and picturesque residential road, the flat benefits from excellent transport links. Archway Station (Northern Line, Zone 2) and Upper Holloway Overground are both within easy walking distance, with multiple bus routes and cycle paths providing further access across London.

The neighbourhood is rich in green spaces, including Highgate Wood, Waterlow Park, and Whittington Park, all within walking distance. Nearby, the vibrant communities of Highgate Village, Tufnell Park, and Crouch End offer an abundance of independent shops, cafes, and everyday amenities.

Offered chain-free, this is a rare opportunity to acquire a substantial and stylish home in one of North London's most sought-after locations, where period elegance meets modern living.

Early viewing is highly recommended.

Council Tax band: D

Tenure: Leasehold

EPC Energy Efficiency Rating: D

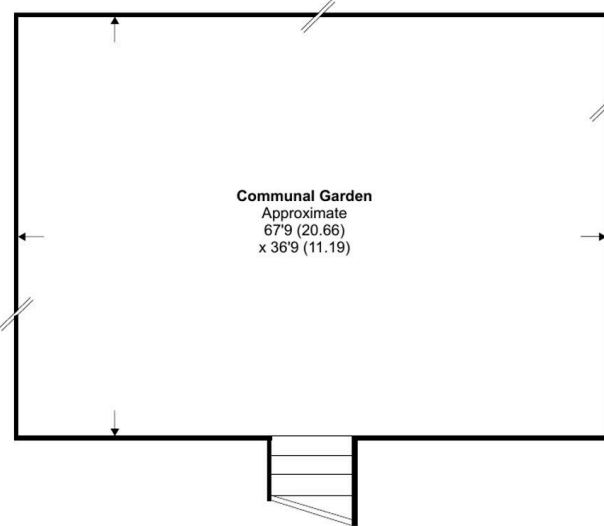




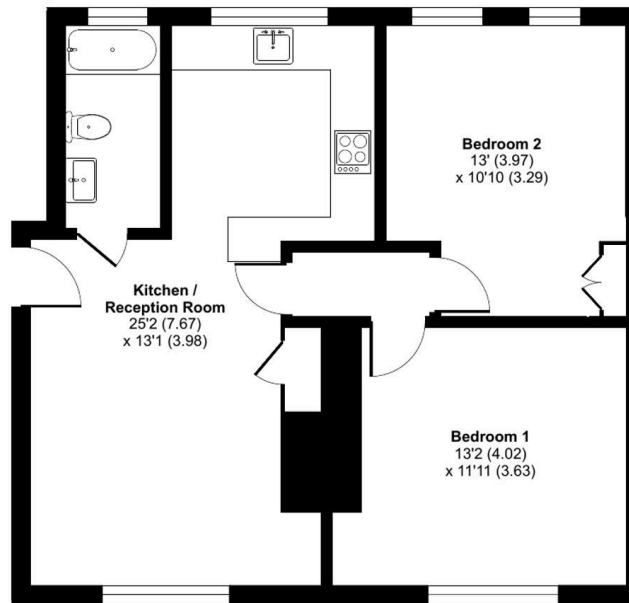
St. John's Villas, London, N19

Approximate Area = 656 sq ft / 60.9 sq m

For identification only - Not to scale



Communal Garden
Approximate
67'9 (20.66)
x 36'9 (11.19)



RAISED GROUND FLOOR

scan to book
a viewing



Floor plan produced in accordance with RICS Property Measurement 2nd Edition, Incorporating International Property Measurement Standards (IPMS2 Residential). © nitchecom 2025. Produced for David Andrew. REF: 1313391



**DAVID
ANDREW**

your
most
valuable
asset

Archway Office

671 Holloway Road
London, N19 5SE

T (0)20 7619 3750

Highbury Office

90 Highbury Park
London, N5 2XE

T (0)20 7354 9111

Finsbury Park Office

167 Stroud Green Road
London, N4 3PZ

T (0)20 7281 2000

Property Management Office

235 Blackstock Road
London, N5 2LL

T (0)20 7354 9222

has been exercised in the
of these particulars,
about the property must not be
on as representations of
or fact. Prospective applicants
e and rely upon their own
and those of professional
ives. David Andrew Estates
liability for any error contained
in these particulars.

