



7 Dalmellington Road, Ayr

In Excess of £290,000

DONALD  
**ROSS**  
RESIDENTIAL





## 7 Dalmellington Road

Ayr, Ayr

Modern 3 bed detached bungalow with stylish dining kitchen, lounge, conservatory, utility room & en-suite bedroom. Driveway & great location in Ayr.

Council Tax band: E

Tenure: Freehold

EPC Energy Efficiency Rating: E

EPC Environmental Impact Rating: F

- Detached bungalow in prime Ayr location
- Bright and airy front-facing lounge
- Stunning modern contemporary dining / kitchen
- Separate utility room for added convenience
- Three generously sized double bedrooms
- Upstairs WC
- Stylish and modern family shower room
- Bright rear conservatory overlooking the garden
- Garage and driveway providing off-street parking
- Close to shops, schools, and transport links

























































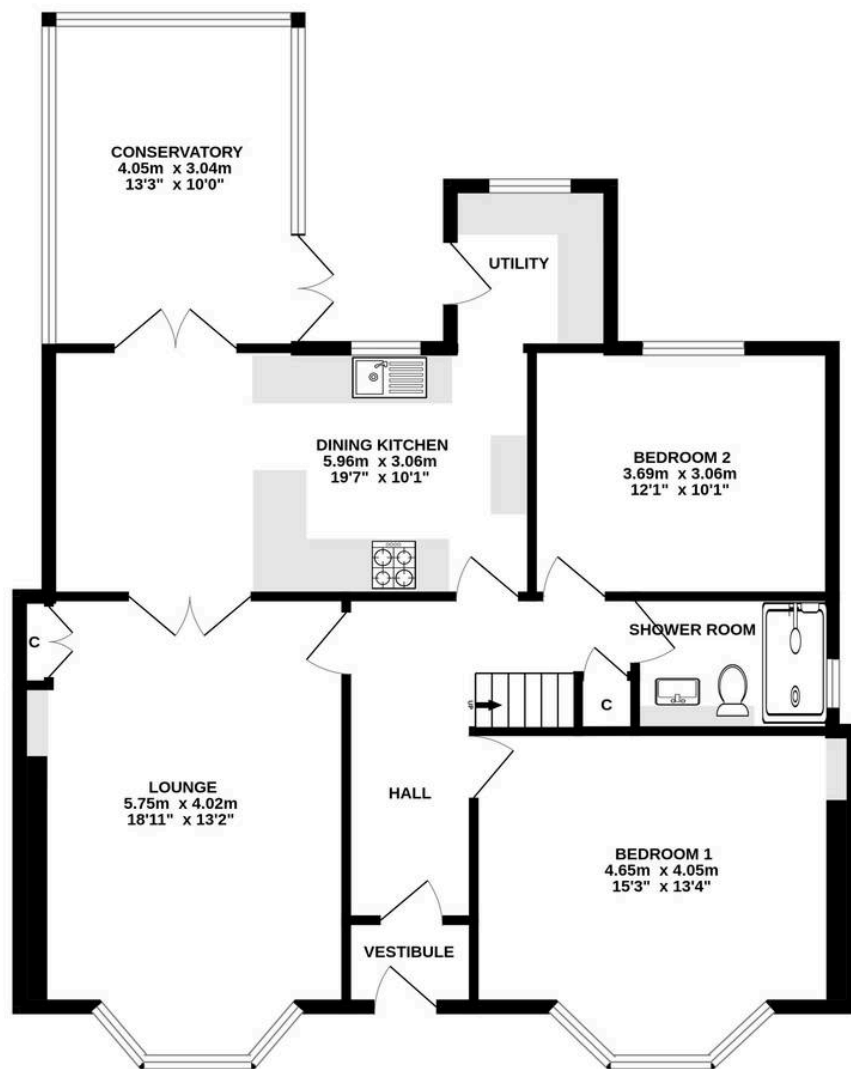




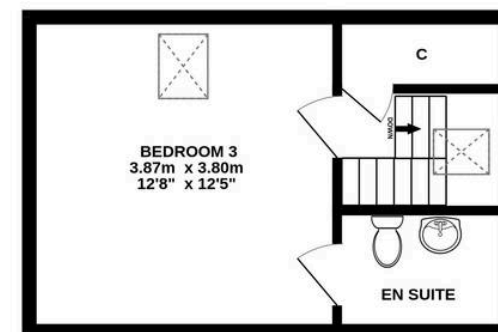




# GROUND FLOOR



# 1ST FLOOR



ALL MEASUREMENTS TAKEN AT WIDEST POINT.

Whilst every attempt has been made to ensure the accuracy of the floorplan contained here, measurements of doors, windows, rooms and any other items are approximate and no responsibility is taken for any error, omission or mis-statement. This plan is for illustrative purposes only and should be used as such by any prospective purchaser. The services, systems and appliances shown have not been tested and no guarantee as to their operability or efficiency can be given.  
Made with Metropix ©2025





## Donald Ross Residential Ayr

Donald Ross, 1 Beresford Terrace – KA7 2ER

01292 288222 • [office@donaldross.co.uk](mailto:office@donaldross.co.uk) • [www.donaldross.co.uk](http://www.donaldross.co.uk)

While every effort has been made to ensure accuracy, buyers should independently verify all details and review the Home Report before submitting an offer. No warranty or representation is given regarding the property, and neither the agent nor the seller accepts responsibility for any inaccuracies. Buyers must satisfy themselves on all legal aspects.