



202 Westview 1, Wellington Road, St. Saviour  
£395,000

**BROADLANDS**  
FINDING YOU A HOME SINCE 1972



# 202 Westview 1, Wellington Road

St. Saviour, Jersey

- Luxurious new build 1 bedroom apartment
- Modern open plan living area
- Great size paved patio
- One of the largest 1 bedrooms 541 sq ft
- Executive residents hub
- Landscaped communal gardens
- Expansive Town top and sea views
- Sole agent
- Call Doug on 07700702585 or [doug@broadlandsjersey.com](mailto:doug@broadlandsjersey.com)





## 202 Westview 1, Wellington Road

St. Saviour, Jersey

A stunning 1 bedroom apartment with a paved patio at the newly built Westview development. This luxury development which boasts stunning sky line views over Town and beyond and set in picturesque communal gardens. Situated in a elevated position on the outskirts of Town. The property comprises of a generous bedroom with fitted wardrobes, a modern open plan living area with a stylish new kitchen with a full range of integrated appliances. House bathroom and a paved terrace area ideal for relaxing after a long day at work. One of the largest 1 bedroom apartments consisting of 541 sq ft. It is only a short walk to the centre of Town. With lift access and the development offers a great size communal hub, an ideal place for relaxing or working from. Broadlands are delighted to be sole agents.







### **Living**

Modern open plan living area with a full range of integrated kitchen appliances with patio doors from your lounge to your sun terrace.

### **Sleeping**

Generous double bedroom with a fitted wardrobe. House bathroom.

### **Services**

All main services. Double glazing and electric heating. Service charges £197 pcm. Building insurance, parish rates, water, part time concierge, CCTV, sinking fund, lift maintenance.

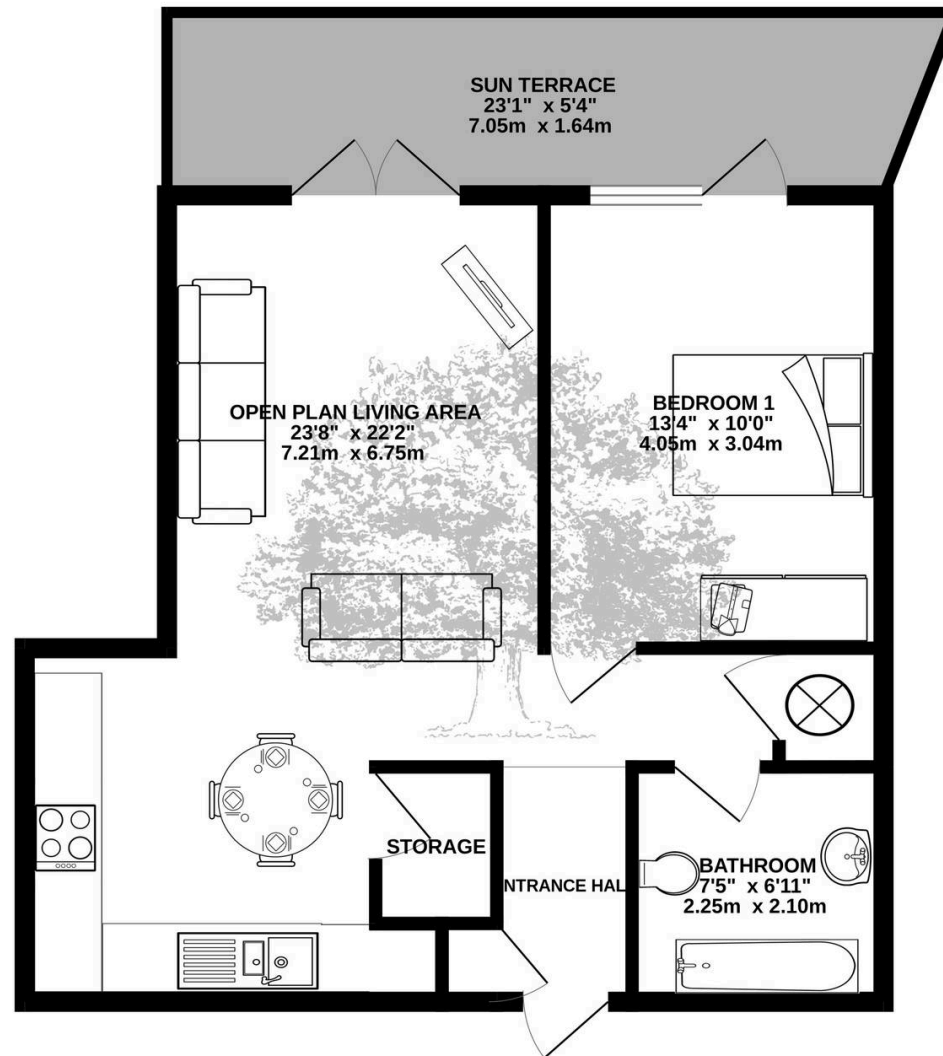
### **Executive hub.**

Relax and enjoy your favorite book or use as a work place.





SECOND FLOOR  
541 sq.ft. (50.3 sq.m.) approx.



TOTAL FLOOR AREA: 541 sq.ft. (50.3 sq.m.) approx.

Whilst every attempt has been made to ensure the accuracy of the floorplan contained here, measurements of doors, windows, rooms and any other items are approximate and no responsibility is taken for any error, omission or mis-statement. This plan is for illustrative purposes only and should be used as such by any prospective purchaser. The services, systems and appliances shown have not been tested and no guarantee as to their operability or efficiency can be given.

Made with Metropix ©2025





## Broadlands

Broadlands Estates, Library Place - JE2 3NL

01534 880770 • [enquiries@broadlandsjersey.com](mailto:enquiries@broadlandsjersey.com) • [www.broadlandsjersey.com/](http://www.broadlandsjersey.com/)

# BROADLANDS

FINDING YOU A HOME SINCE 1972