



**235 Bank Street, Irvine**

In Excess of **£210,000**

DONALD  
**ROSS**  
RESIDENTIAL





## 235 Bank Street

Irvine,

Charming 2 bed semi detached bungalow with modern kitchen, utility room, stylish bathroom, gardens, summerhouse, driveway & garage in prime Irvine location.

Council Tax band: D

Tenure: Freehold

- Two spacious double bedrooms
- Modern fitted dining kitchen
- Separate utility room
- Contemporary family bathroom
- Generous lounge
- Immaculate front & rear gardens
- Summerhouse included
- Detached garage
- Private driveway
- Quiet, sought-after location



























































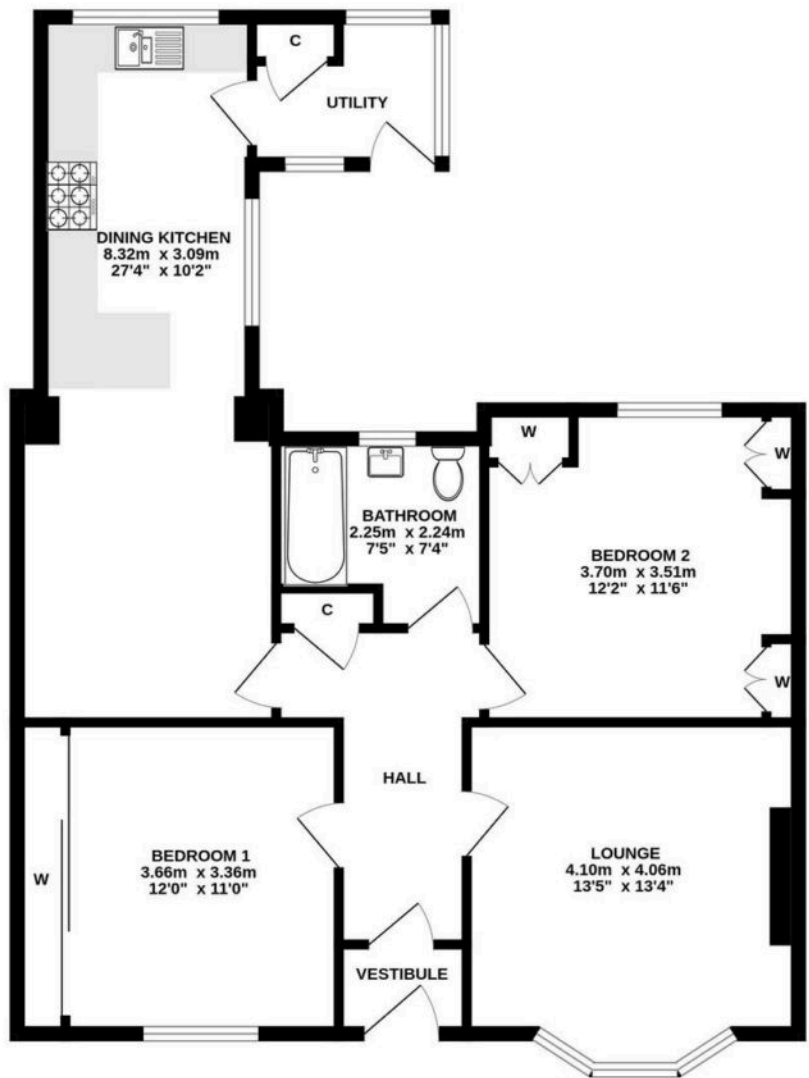




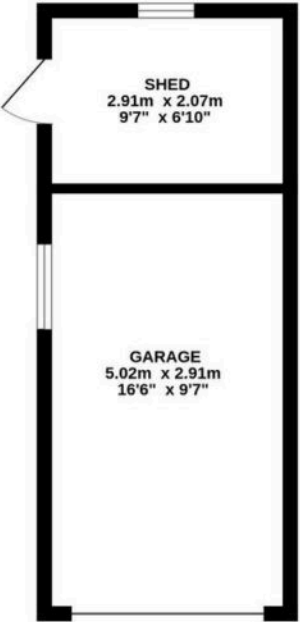




GROUND FLOOR



1ST FLOOR



ALL MEASUREMENTS TAKEN AT WIDEST POINT.

Whilst every attempt has been made to ensure the accuracy of the floorplan contained here, measurements of doors, windows, rooms and any other items are approximate and no responsibility is taken for any error, omission or mis-statement. This plan is for illustrative purposes only and should be used as such by any prospective purchaser. The services, systems and appliances shown have not been tested and no guarantee as to their operability or efficiency can be given.  
Made with Metropix ©2025





## Donald Ross Residential Irvine

Donald Ross Estate Agents, 9B Riverway Retail Park Riverway – KA12 8AG

01294 446788 • [irvine@donaldross.co.uk](mailto:irvine@donaldross.co.uk) • [www.donaldross.co.uk](http://www.donaldross.co.uk)

While every effort has been made to ensure accuracy, buyers should independently verify all details and review the Home Report before submitting an offer. No warranty or representation is given regarding the property, and neither the agent nor the seller accepts responsibility for any inaccuracies. Buyers must satisfy themselves on all legal aspects.