



Kilverton Close, Nottingham

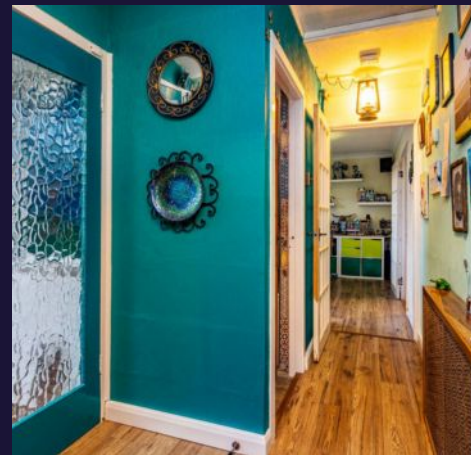
Guide Price £250,000

 **Comfort**
Estates



A two-bedroom bungalow located on a quiet cul-de-sac in Wollaton, previously a three-bedroom property. The current owners have created a characterful home with a new bathroom, recently fitted kitchen, and a separate dining room. The living room features a new log burner for winter and bi-folding doors leading to the garden, perfect for summer gatherings. Enjoy the wildlife from your armchair! The south-facing garden is a highlight, with a large lawn bordered by mature plants, all privately enclosed. The bungalow includes two bedrooms and a recently fitted family bathroom. This property is ideal for downsizers seeking manageable space with a great garden or home-movers stepping up the property ladder. Please note, this property is of non-standard construction. Call now to secure your viewing!

- Wollaton Hall and Deer Park Nearby
- Private South-Facing Garden
- Two Double Bedrooms
- Cul-de-sac Location
- Off-Road Parking
- Log Burner
- Bi-folding Doors To Rear Garden





Kitchen

Modern kitchen with anthracite wall and base units with Oak wooden worktops over. Laminate flooring with integral appliances and electric extractor fan.

Dining Room

Bright and spacious dining room with laminate flooring and characterful small pane windows to the front aspect overlooking the front garden.

Lounge

Good-sized living room with laminate flooring, stunning log burner with a featured mantle. Bi-folding doors lead directly onto the rear garden providing peace and quiet without being overlooked.

Bedroom 1

Double bedroom with carpeted flooring and window to the rear aspect allowing great views to the rear garden.

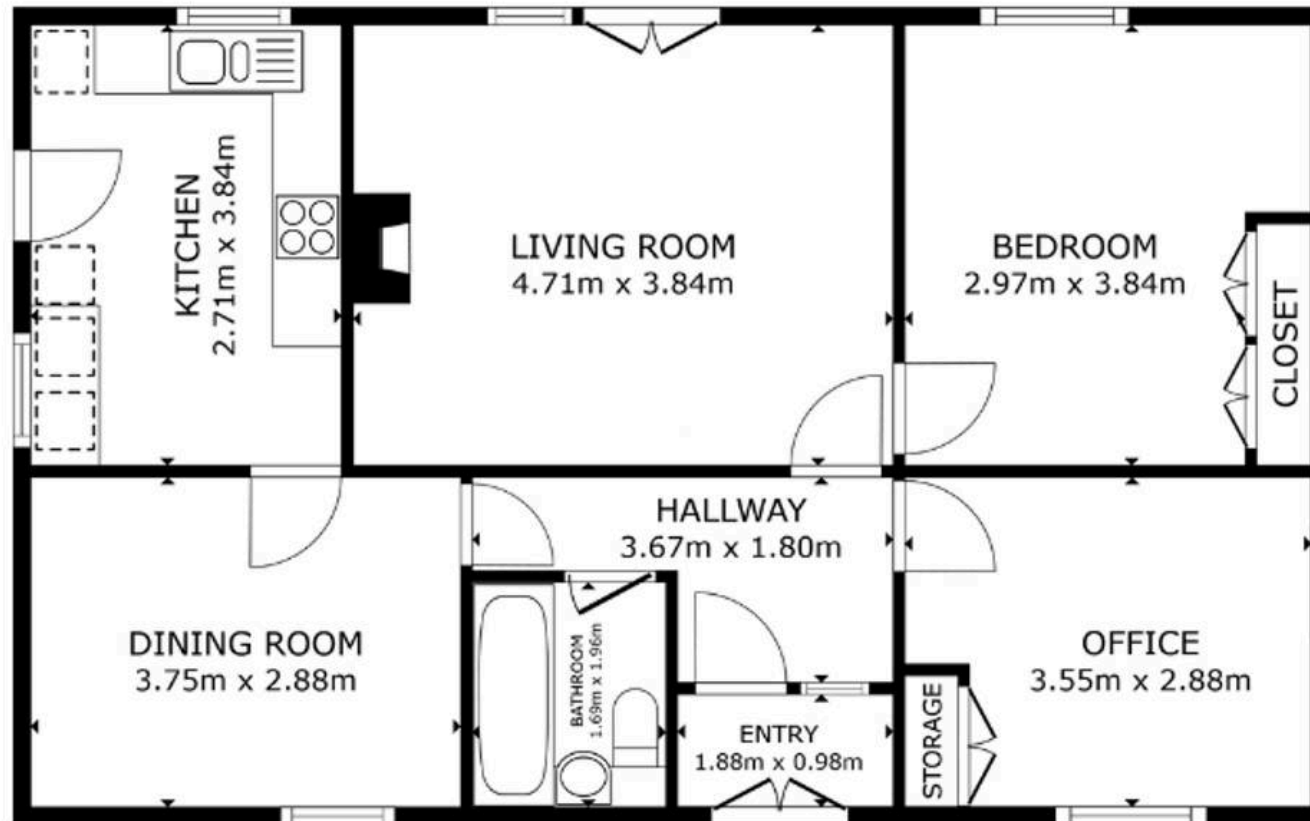
Bedroom 2

The second double bedroom is currently used as an office. Laminate flooring and window to the front aspect.

Bathroom

Recently fitted bathroom with P-shaped bath, tiled flooring, and walls with featured mosaic splashbacks. A stained glass window to the side aspect only adds to the already characterful property.





FLOOR PLAN

GROSS INTERNAL AREA
FLOOR PLAN 76.3 m²
TOTAL : 76.3 m²
SIZES AND DIMENSIONS ARE APPROXIMATE, ACTUAL MAY VARY.



Comfort Estates

Comfort Estates, 47 Derby Road - NG1 5AW

0115 9338997 • info@comfortestates.co.uk • www.comfortestates.co.uk