



Cavendish Crescent South, Nottingham
£1,825 pcm



Cavendish Crescent South, Nottingham

Comfort Estates are delighted to present this beautifully modernised two-bedroom ground floor apartment, located on the desirable Cavendish Crescent South in the heart of highly regarded The Park Estate. You will enjoy a beautiful leafy conservation area situated close to the city offering a peaceful yet convenient setting.

This spacious property features:

- Two generous double bedrooms, one with ample built-in storage and charming sash windows
- A bright, open-plan living and kitchen area, perfect for relaxing or entertaining
- Double doors leading to a private patio—ideal for outdoor dining or unwinding
- A stunning south-facing garden, just a few steps down from the patio
- Additional secure storage located on the ground floor of the building, perfect to bikes, luggage etc.

The apartment also benefits from two bathrooms:

- The main bathroom with a shower over the bath, toilet, and sink with a double storage unit
- A second bathroom, equipped with a shower cubicle, sink unit, and toilet





Cavendish Crescent South, Nottingham

| Stunning Apartment | In the Heart of The Park Estate | Highly Sought After Location | Conservation Area | Two Double Bedrooms | Two Bathrooms | South Facing Garden | Patio | Free Permit Parking | Unfurnished | Available 15th August |

Council Tax band: E

EPC Energy Efficiency Rating: C

EPC Environmental Impact Rating: D

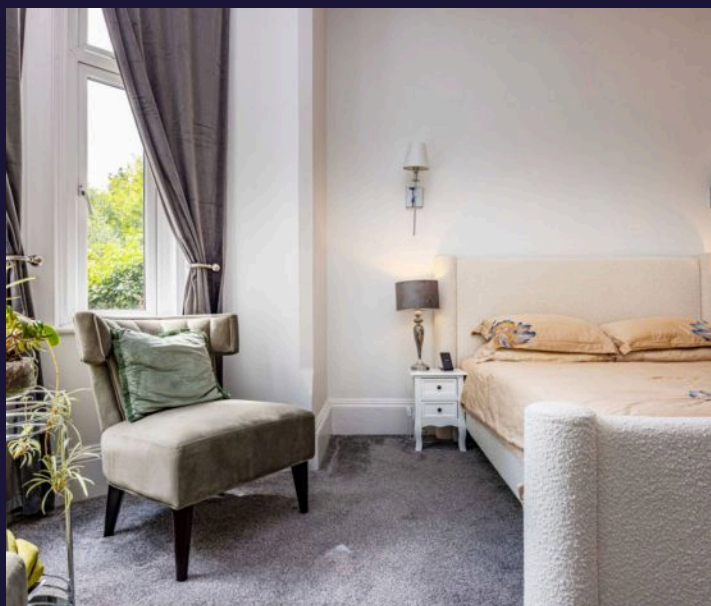
- Two Double Bedrooms
- Two Bathrooms
- Beautiful Garden
- Park Estate Location
- Modern Throughout
- Open Plan Living
- Unfurnished Apartment
- Available 15th August 2025
- Integrated Appliances
- Free Permit Parking

Offered unfurnished, the kitchen includes integrated appliances: fridge, freezer, hob, and oven. Additionally, a separate utility room provides space for a washing machine.

Available from 15th August, this property is an ideal choice for a professional couple or two sharers looking for modern living in a sought-after location.



You can include any text here. The text can be modified upon generating your brochure.



**Bedroom 1**

Beautiful double bedroom with large, brand new windows allowing in natural light.

Bedroom 2

Further spacious, double bedroom with built in wardrobe.

Bathroom 1

Main bathroom with shower over bath, toilet and sink over double storage unit.

Bathroom 2

Further bathroom with shower cubicle, toilet and sink with cabinet.

Kitchen

Open plan kitchen with plenty of storage space, integrated fridge, freezer, hob and oven.

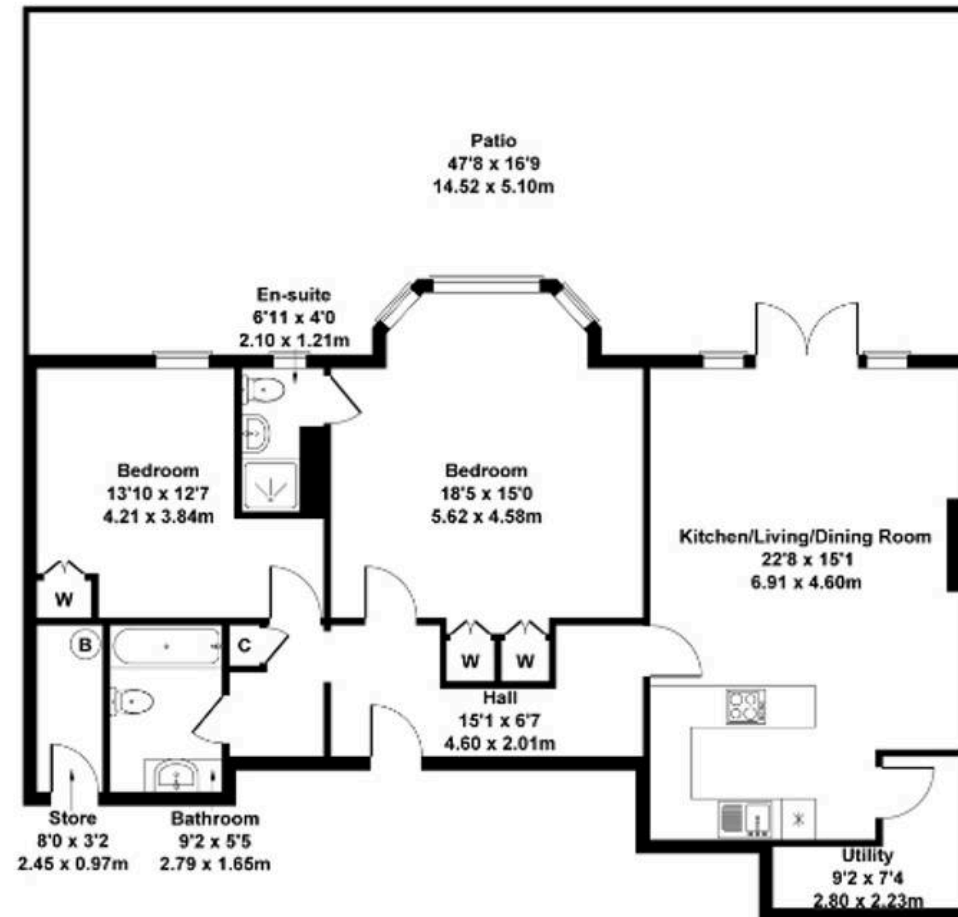
Living Area

Bright and spacious living area which leads out onto the private patio and south facing garden.





Approximate Gross Internal Area
969 sq ft - 90 sq m



Not to Scale. Produced by The Plan Portal 2025
For Illustrative Purposes Only.



Comfort Estates

Comfort Estates, 47 Derby Road - NG1 5AW

0115 9338997 • info@comfortestates.co.uk • www.comfortestates.co.uk