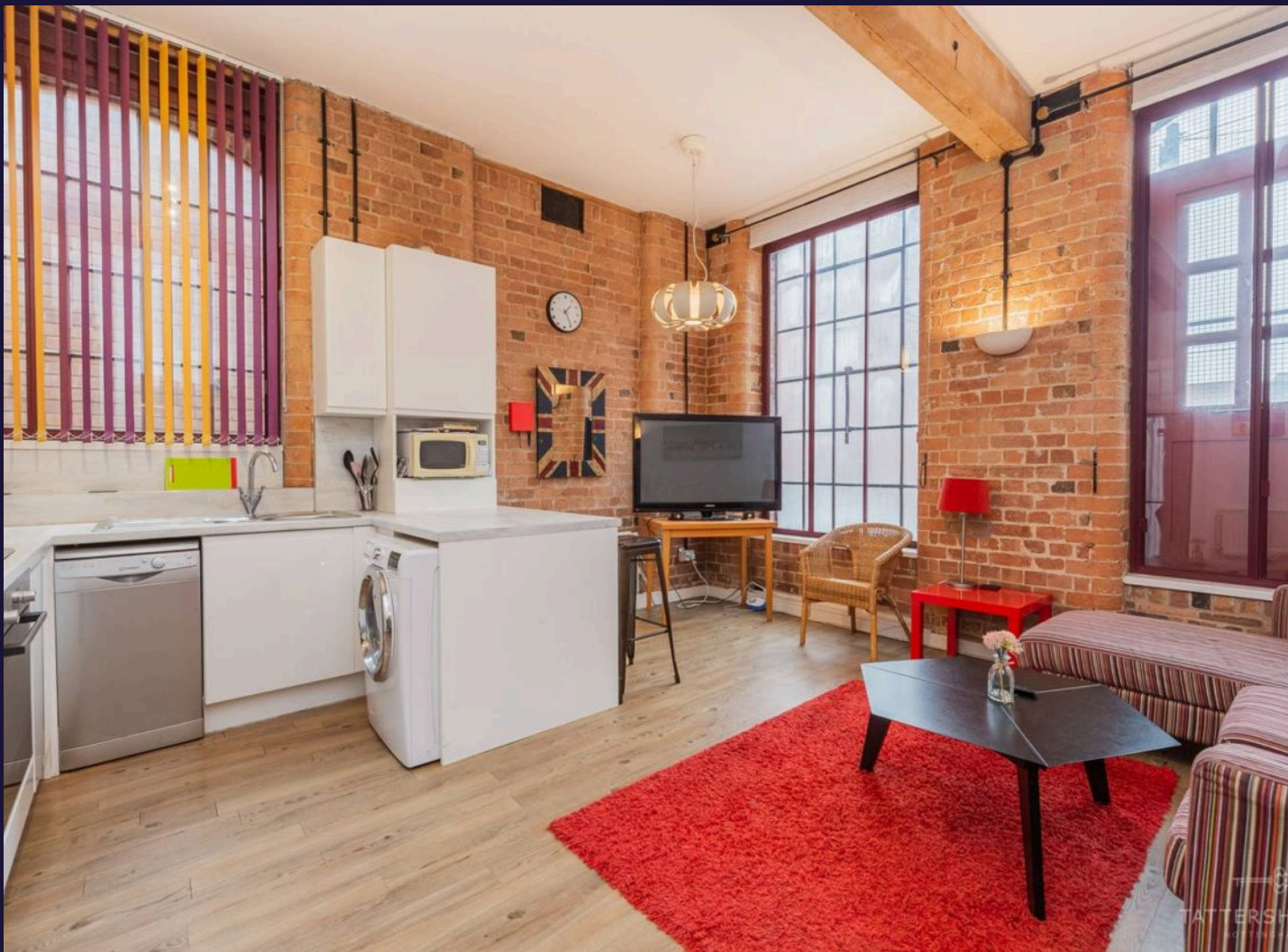




Raleigh Square Raleigh Street, Nottingham  
£1,350 pcm





## Raleigh Square Raleigh Street, Nottingham

Tattershalls are proud to present this lovely, modern ground floor apartment at Raleigh Square that comes fully furnished. Open plan living, kitchen and dining area with exposed brickwork, high ceilings and beams. There are 2 large double bedrooms and 1 large bathroom with a new separate shower enclosure. The flat has 1 allocated secure parking space behind electronic gates and there is an intercom system for safe entry into the building.

The fully furnished living room comes with a large L shaped sofa, coffee table, TV table, dining table with 2 chairs and bookshelves. A new fitted kitchen has large fridge freezer, dishwasher, washing machine and a microwave. Both bedrooms have double beds, wardrobes, chest of drawers and desks.

Close to the heart of the city centre and a seven minute walk to Trent University and one minute to Tesco Express. Minutes to the Uni Link bus at Canning Circus for access to the Clifton Campus or Nottingham University.

£1,265pcm / £292pw excluding utilities.

Available to rent from the 22nd September 2025.



Tattershalls are proud to present this lovely, modern ground floor apartment at Raleigh Square that comes fully furnished. Open plan living, kitchen and dining area with exposed brickwork, high ceilings and beams. There are 2





## Raleigh Square Raleigh Street, Nottingham

CALLING ALL STUDENTS! Two bedroom apartment close to Nottingham City Centre with one secure parking space. £145ppw – Available September 2025!

Council Tax band: B

EPC Energy Efficiency Rating: C

EPC Environmental Impact Rating: C

- Student Property
- Two Double Bedrooms
- Open Plan Kitchen & Living Area
- Fully Furnished
- Allocated Parking Included
- Available 22nd September 2025
- Close To City Centre
- Ground Floor Apartment
- Access To Both Universities
- Spacious Bathroom



### **BEDROOM TWO**

Dimensions: 11' 11" x 10' 2" (3.63m x 3.1m). Double bedroom with carpet flooring and large window. Exposed bricks and beam.

### **BEDROOM ONE**

Dimensions: 13' 8" x 10' 2" (4.17m x 3.1m). Double bedroom with large window and carpet flooring. Exposed brick and beam.

### **KITCHEN/DINER**

Dimensions: 15' 5" x 17' 9" (4.7m x 5.41m). Open plan kitchen / living area. With gloss kitchen units, laminate flooring, exposed bricks and beam. Large windows with secondary glazing.

### **BATHROOM**

Dimensions: 7' 11" x 8' 5" (2.41m x 2.57m). Modern bathroom with bath, shower cubical, WC and sink with vanity unit. Laminate flooring and large window with obscured glass. Exposed brick.

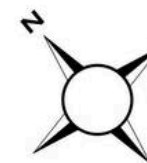






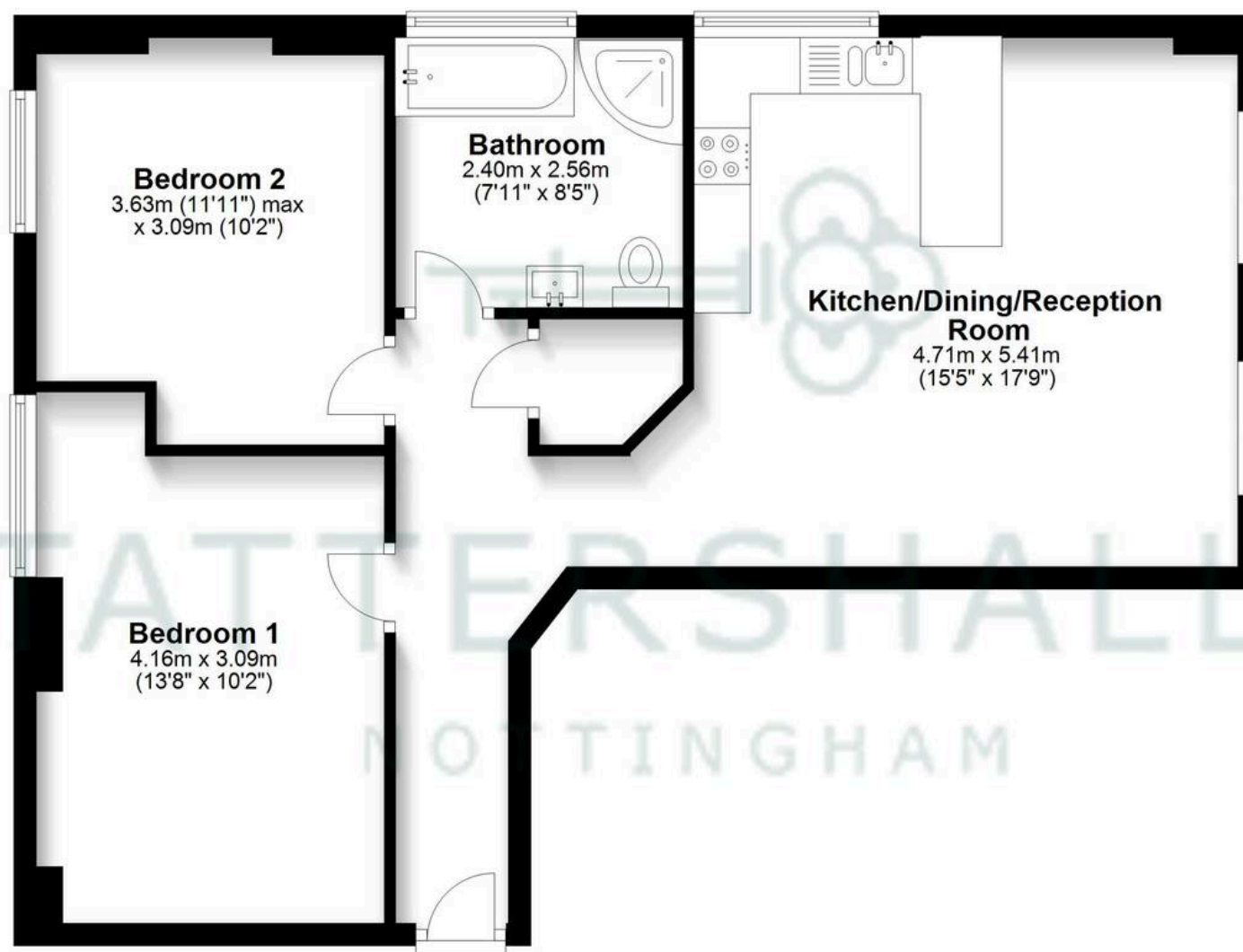






## Ground Floor

Approx. 63.8 sq. metres (687.0 sq. feet)



Total area: approx. 63.8 sq. metres (687.0 sq. feet)

Floor Plan measurements are approximate and are for illustrative purposes only. While we do not doubt the floor plans accuracy, we make no guarantee, warranty or representation as to the accuracy and completeness of the floor plan.

Plan produced using PlanUp.





# Comfort Estates

Comfort Estates, 47 Derby Road - NG1 5AW

0115 9338997 • [info@comfortestates.co.uk](mailto:info@comfortestates.co.uk) • [www.comfortestates.co.uk](http://www.comfortestates.co.uk)