

## 1 Lindsway Park, Haverfordwest

£280,000 Freehold

Detached bungalow situated on a large corner plot • 3 bedrooms, 2 reception rooms, 2 bathrooms • Driveway, garage & wrap around garden • Ideal family / forever home • Desirable location in Haverfordwest close to amenities







Council Tax band: E

Tenure: Freehold

EPC Energy Efficiency Rating: E

EPC Environmental Impact Rating: E







#### Hallway

#### Lounge

16' 3" x 13' 3" (4.96m x 4.03m)

#### Dining Room

12' 0" x 10' 10" (3.67m x 3.29m)

#### Kitchen

13' 10" x 12' 8" (4.22m x 3.85m)

#### Bedroom 1

12' 2" x 10' 10" (3.70m x 3.31m)

#### Bedroom 2

12' 1" x 10' 3" (3.68m x 3.12m)

#### Bedroom 3

9' 9" x 7' 2" (2.97m x 2.19m)

#### Bathroom 1

7' 9" x 4' 9" (2.35m x 1.45m)

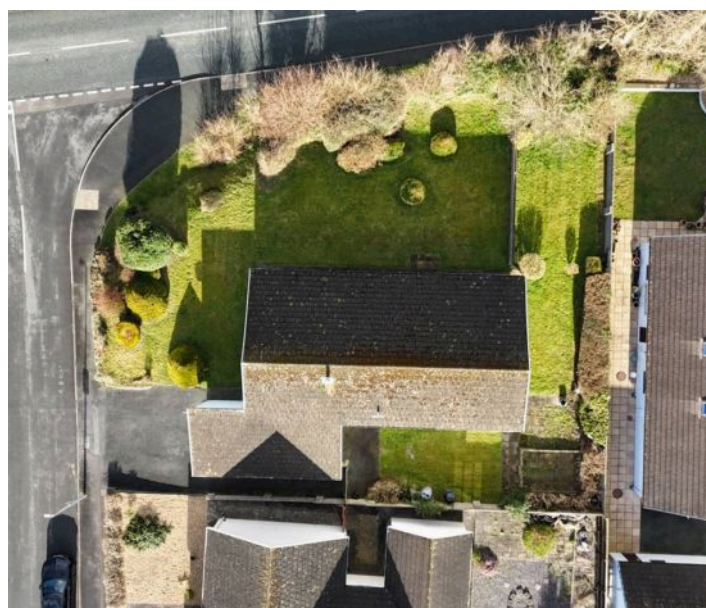
#### Porch

#### Bathroom 2

6' 6" x 5' 2" (1.99m x 1.58m)

#### Garage

5.67m x 3.02m







GARDEN





