



Pitchings, Wrington Road

Congresbury, Bristol

An exceptional 5 bedroom detached period house with detached contemporary 2 bedroom barn conversion, plus additional outbuildings with development potential set in a commanding elevated location in over 15 acres with wonderful gardens, rolling paddocks, ancient woodland and an ornamental lake

Council Tax band: G

Tenure: Freehold

EPC Energy Efficiency Rating: F

EPC Environmental Impact Rating: F

- Approx 4,098 sq ft of beautifully appointed accommodation
- A total of 7 bedrooms and 5 bathrooms
- Detached house plus separate 2 bed, 2 bathroom barn conversion
- 4 reception rooms with classic period features
- Outbuildings with development potential (STPP)
- Over 15 acres of land including beautiful woodland
- Private location with superb views
- Bristol airport 6.3 miles
- Situated between the popular villages of Wrington and Congresbury offering excellent amenities
- Easy access to M5, mainline railway services and Bristol city centre







Pitchings, Wrington Road

Congresbury, Bristol

Believed to date from the 1800's, Pitchings is a beautifully presented, substantial period property. Characterised by high ceilings, flagstone floors, an elegant central staircase, sash windows, attractive cornicework and open fireplaces, the accommodation has been extensively renovated and improved by the current owners to create a very impressive and flexible property to suit a variety of needs.

Highlights of Pitchings include the welcoming reception hall with flagstone floor, and the generously proportioned dining and sitting rooms, both with open fireplaces and superb panoramic views through tall, wide sash windows with working shutters.

The unusually large conservatory provides direct garden access and wonderful views, and the well fitted kitchen/breakfast room incorporates a racing green Aga and an extensive range of wooden units with granite work surfaces, in addition to a Neff double oven, plus space for a large breakfast table and a sofa. Off the kitchen is a generous utility/boiler room, a boot room with direct access to the parking area, and a large pantry with steps down to the cellar, ideal for wine storage. Also on the ground floor is a smart cloak/boot room and a study with wooden floor and French doors providing access to the alfresco dining area and wide flagstone terrace running across the back of the house.

The upstairs accommodation is also very well proportioned, and incorporates an impressive amount of storage cupboards on both floors: similar to the ground floor, a neutral palette has been used throughout, giving a sense of calm elegance. Arranged around a galleried landing with an attractive arched window, the first floor includes a superb laundry/airing room in addition to the stylish family bathroom, additional separate cloakroom, 2 double bedrooms and the double aspect principal bedroom with spacious en-suite shower room. On the second floor are 2 further bedrooms and a smart bathroom.









THE GARDENS AND GROUNDS at Pitchings have to be viewed to be truly appreciated and understood. From arrival along the tree-lined private driveway, one is struck by the secluded location, impressive and varied selection of mature trees and panoramic views. The property is situated within the Green Belt and the ancient woodland and old quarry works behind the house provide a notable backdrop and an extensive natural wildlife habitat. They are designated Sites Of Special Interest, both Scientific and Nature Conservation. In addition to the large parking area there is a greenhouse to one side, plus further outbuildings (see below). The gardens and grounds provide a variety of habitats and growing conditions for the keenest gardener. All are currently fully accessible, but if required could be formally divided to give separate, private garden spaces for each of the 3 main buildings. A 5-bar gate near Barn II/Garage provides direct access to Wrington Road in addition to the main private driveway.



Running across the back of the main house is a wide flagstone terrace bordered by low stone walling, which provides a fantastic location for alfresco dining and entertaining, or to simply sit and enjoy the surroundings. Below the terrace is a wide garden area, laid mainly to lawn and bordered by low stone walls and a selection of mature hedges and shrubs.



Floating stone steps inset into the stone wall drop down to the rest of the grounds, which include an extensive range of mature trees and a rolling paddock (approaching 5 acres), bordered by natural hedges, low stone walls and metal rail fencing. The gently curving ornamental lake provides a superb wildlife habitat and the panoramic views across the Wrington valley towards Crook Peak and the Mendip Hills are simply stunning.

BARN II/GARDEN STORE – another detached building arranged over 2 storeys, for which pre-planning advice has been obtained to create a 3 bedroom residential dwelling including an extension to the existing barn. (Ref:20/P/1679/PR2).

THE LIME KILN – is a detached oak-beamed stone building (approx. 15'3" wide x 18'2" at its maximum depth), providing parking/storage, and offers further development potential subject to the necessary permissions.

LOCATION – Pitchings is located on the outskirts of Congresbury, a very popular village with excellent amenities including shops, nursery and primary schools, within the catchment area for the "Outstanding" Churchill Academy and Sixth Form. Further amenities are available nearby in Wrington and regular mainline railway services are within 2.7 miles from Yatton station (London Paddington from 114 minutes). There is access to the M5 within 6.7 miles, either at Jct 20 or Jct 21. Bristol Airport is within 6.3 miles and Bristol city centre approximately 12.6 miles distant. The surrounding countryside provides excellent opportunities for walking, riding and outdoor pursuits

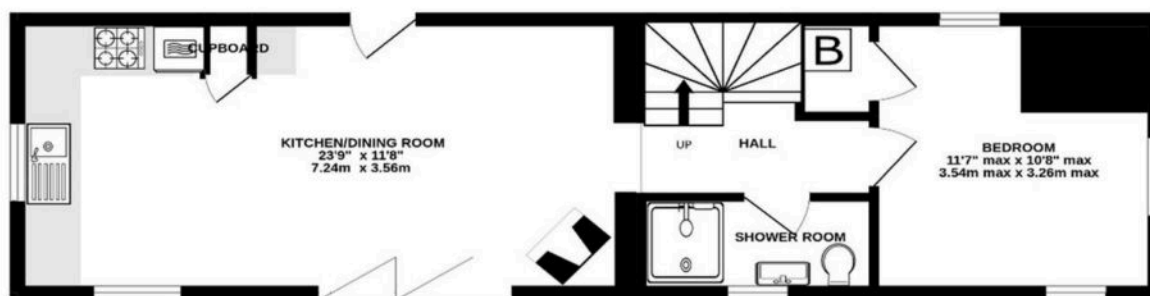


Pitchings, Wrington Road

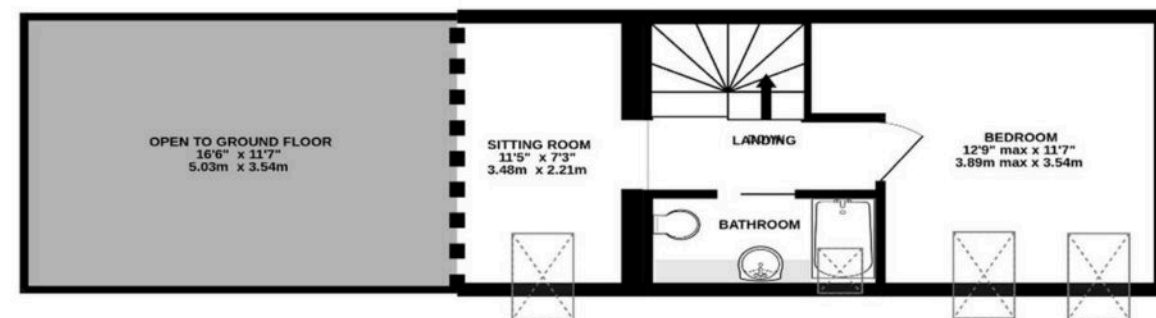
Congresbury, Bristol

THE BARN – is a beautifully presented, recently converted detached stone walled barn, ideal for dual occupation, to provide an income source (subject to any necessary consents) or as a separate office suite for working from home. The double height sitting/dining/kitchen room with smart slate floor, wood burner and direct garden access through a glazed bi-fold door incorporates high quality fitted kitchen NEFF and Zanussi appliances including a double oven, gas hob and overhead extractor, dishwasher, fridge and freezer. Also on the ground floor is a stylish shower room and generous double bedroom with a utility/boiler room off. On the first floor is another double bedroom with exposed beams and 2 Velux windows, a smart bathroom and a contemporary glazed mezzanine office/sitting room overlooking the ground floor.

GROUND FLOOR
474 sq.ft. (44.0 sq.m.) approx.



1ST FLOOR
305 sq.ft. (28.3 sq.m.) approx.



TOTAL FLOOR AREA : 779 sq.ft. (72.3 sq.m.) approx.
Whilst every attempt has been made to ensure the accuracy of the floorplan contained here, measurements of doors, windows, rooms and any other items are approximate and no responsibility is taken for any error, omission or mis-statement. This plan is for illustrative purposes only and should be used as such by any prospective purchaser. The services, systems and appliances shown have not been tested and no guarantee as to their operability or efficiency can be given.
Made with Metropix ©2022



GROUND FLOOR
1708 sq.ft. (158.7 sq.m.) approx.



1ST FLOOR
1076 sq.ft. (100.0 sq.m.) approx.



2ND FLOOR
526 sq.ft. (48.9 sq.m.) approx.



TOTAL FLOOR AREA : 3310 sq.ft. (307.5 sq.m.) approx.

Whilst every attempt has been made to ensure the accuracy of the floorplan contained here, measurements of doors, windows, rooms and any other items are approximate and no responsibility is taken for any error, omission or mis-statement. This plan is for illustrative purposes only and should be used as such by any prospective purchaser. The services, systems and appliances shown have not been tested and no guarantee as to their operability or efficiency can be given.
Made with Metropix ©2022

Robin King

Robin King Estate Agents, 1-2 The Cross Broad Street - BS49 5DG

01934 876226 • post@robin-king.com • www.robin-king.com/

Sales particulars are for guidance only. No structural survey or service testing has been done. These details aren't part of a contract and shouldn't be relied on as facts. References to alterations or use don't confirm regulatory approval. Buyers must verify all information. Measurements are approximate; check them. Contact us with any important concerns before viewing.