



7 Poles Road, Fenwick, KA3 6EB

In Excess of £99,000

DONALD
ROSS
RESIDENTIAL



7 Poles Road

Fenwick, KA3 6EB

Nestled in the charming village of Fenwick, 7 Poles Road offers a wonderful opportunity for those seeking a peaceful yet well-connected home. This inviting property features well-proportioned living spaces, a cozy atmosphere, and easy access to local amenities. With a picturesque rural setting and convenient transport links to nearby towns and cities, this home combines countryside charm with modern convenience.

Council Tax band: A

Tenure: Freehold

EPC Energy Efficiency Rating: C

EPC Environmental Impact Rating:

- Close to Local Amenities & Transport Links
- Double Glazing
- Modern Family Bathroom
- Spacious Lounge
- Recently Modernised
- Rear Garden
- Modern Kitchen
- Gas Central Heating
- Sought After Residential Area
- Two Bedrooms

















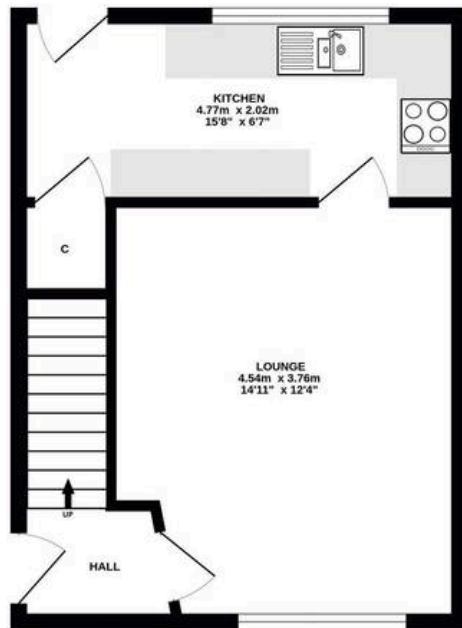




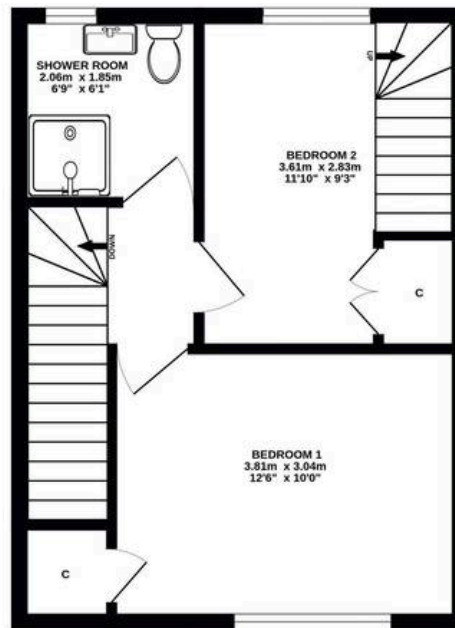




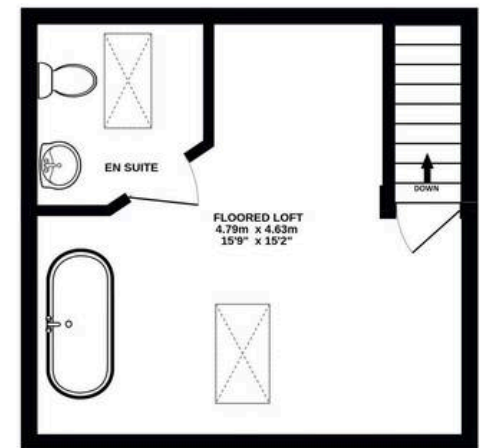
GROUND FLOOR



1ST FLOOR



2ND FLOOR



ALL MEASUREMENTS TAKEN AT WIDEST POINT.

Whilst every attempt has been made to ensure the accuracy of the floorplan contained here, measurements of doors, windows, rooms and any other items are approximate and no responsibility is taken for any error, omission or mis-statement. This plan is for illustrative purposes only and should be used as such by any prospective purchaser. The services, systems and appliances shown have not been tested and no guarantee as to their operability or efficiency can be given.
Made with Metropix ©2025



Donald Ross Residential Kilmarnock

Donald Ross Residential, 104-106 John Finnie Street – KA1 1BB

01563 550088 • kilmarnock@donaldross.co.uk • www.donaldross.co.uk

While every effort has been made to ensure accuracy, buyers should independently verify all details and review the Home Report before submitting an offer. No warranty or representation is given regarding the property, and neither the agent nor the seller accepts responsibility for any inaccuracies. Buyers must satisfy themselves on all legal aspects.