



Rose Meadow, Haddenham - HP17 8FQ

Guide Price £535,000

TR TIM RUSS
& Company



Rose Meadow

Haddenham, Buckinghamshire

- HIGHLY IMPRESSIVE SEMI-DETACHED FAMILY HOME IN A SUPER VILLAGE LOCATION
- ORIGINALLY CONSTRUCTED IN 2019 BY HIGHLY REGARDED BUILDERS, DANDARA HOMES
- STYLISH & CONTEMPORARY KITCHEN/DINING SPACE
- BRIGHT & SPACIOUS BAY FRONTED SITTING ROOM
- UTILITY AREA & CLOAKROOM
- FAMILY BATHROOM & EN-SUITE SHOWER ROOM OFF PRINCIPAL BEDROOM
- DESIGNATED PARKED AVAILABLE WITH THE PROPERTY
- OFFERED WITH NO ONWARD CHAIN



Rose Meadow

Haddenham, Buckinghamshire

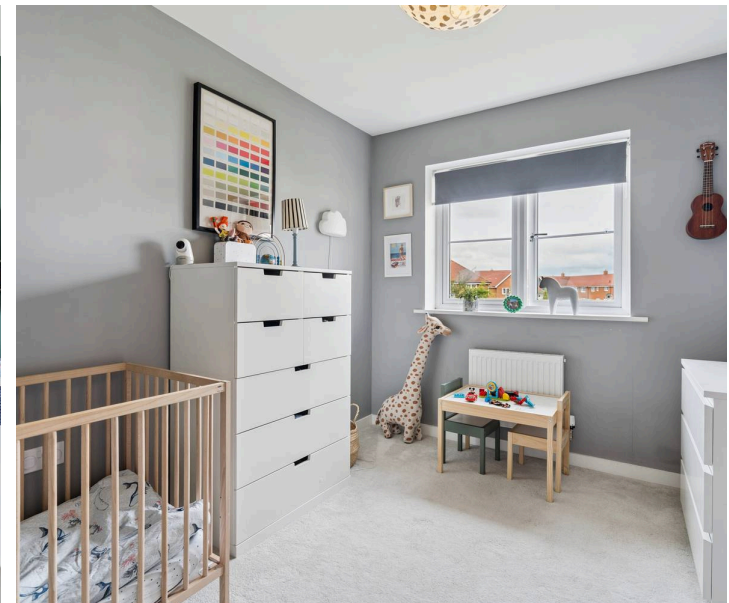
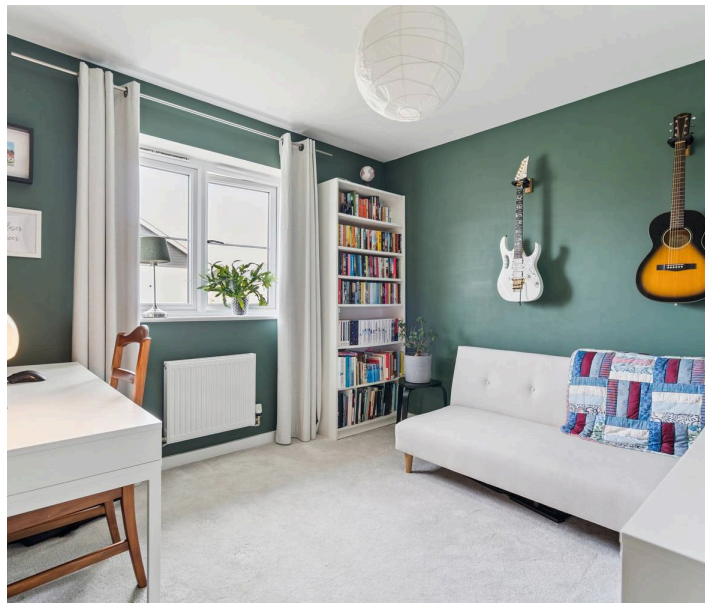
Situated in a top village in an excellent position is this immaculate three bedroom, two bathroom semi detached family home.

Situated in a top village in an excellent position is this immaculate three bedroom, two bathroom semi detached family home. Originally constructed in 2019 by highly regarded builder Dandara Homes, this exceptional property has been loved and cared for by the current owners. Upon entering this wonderful home, you are greeted by the welcoming reception hall which provides access to the spacious and bright bay fronted living room. An excellent space for the family to enjoy. There is also the stylish and contemporary kitchen/dining space complete with a four ring gas hob and French doors out to the rear garden. There is also a handy utility area and cloakroom, completing the ground floor accommodation. To the first floor, there are three bedrooms and a family bathroom. Special mention must be made of the principal bedroom that offers a spacious en-suite shower room. This concludes the internal accommodation.

Outside

To the front, there is designated parking available with pedestrian gated access to the rear garden. To the rear, the garden is a good size mainly laid to lawn with with a patio terrace ideal for entertaining.

Council Tax band: E; Tenure: Freehold; EPC: B



Approximate Gross Internal Area
 Ground Floor = 47.2 sq m / 508 sq ft
 First Floor = 47.0 sq m / 506 sq ft
 Total = 94.2 sq m / 1,014 sq ft

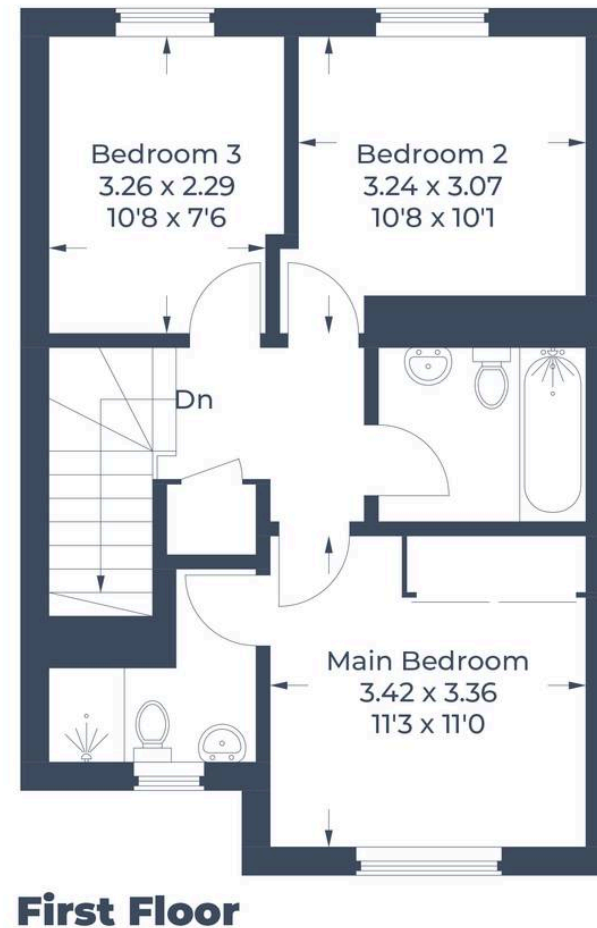


Illustration for identification purposes only,
 measurements are approximate, not to scale.
 © CJ Property Marketing Produced for Tim Russ & Co - Thame

Tim Russ and Company

Tim Russ & Co, 112 High Street - OX9 3DZ

01844 217722 • thame@timruss.co.uk • timruss.co.uk/

By law we must verify every seller and buyer for anti-money laundering purposes.
 Checks are carried out by our partners at Lifetime Legal for a non-refundable £60 (incl. VAT) fee, paid directly to them.
 For more information please visit our website.

