



Strawberry Fields 8 Hautmont Estate, Le Mont Millais, St. Helier **BROADLANDS**  
£1,450,000

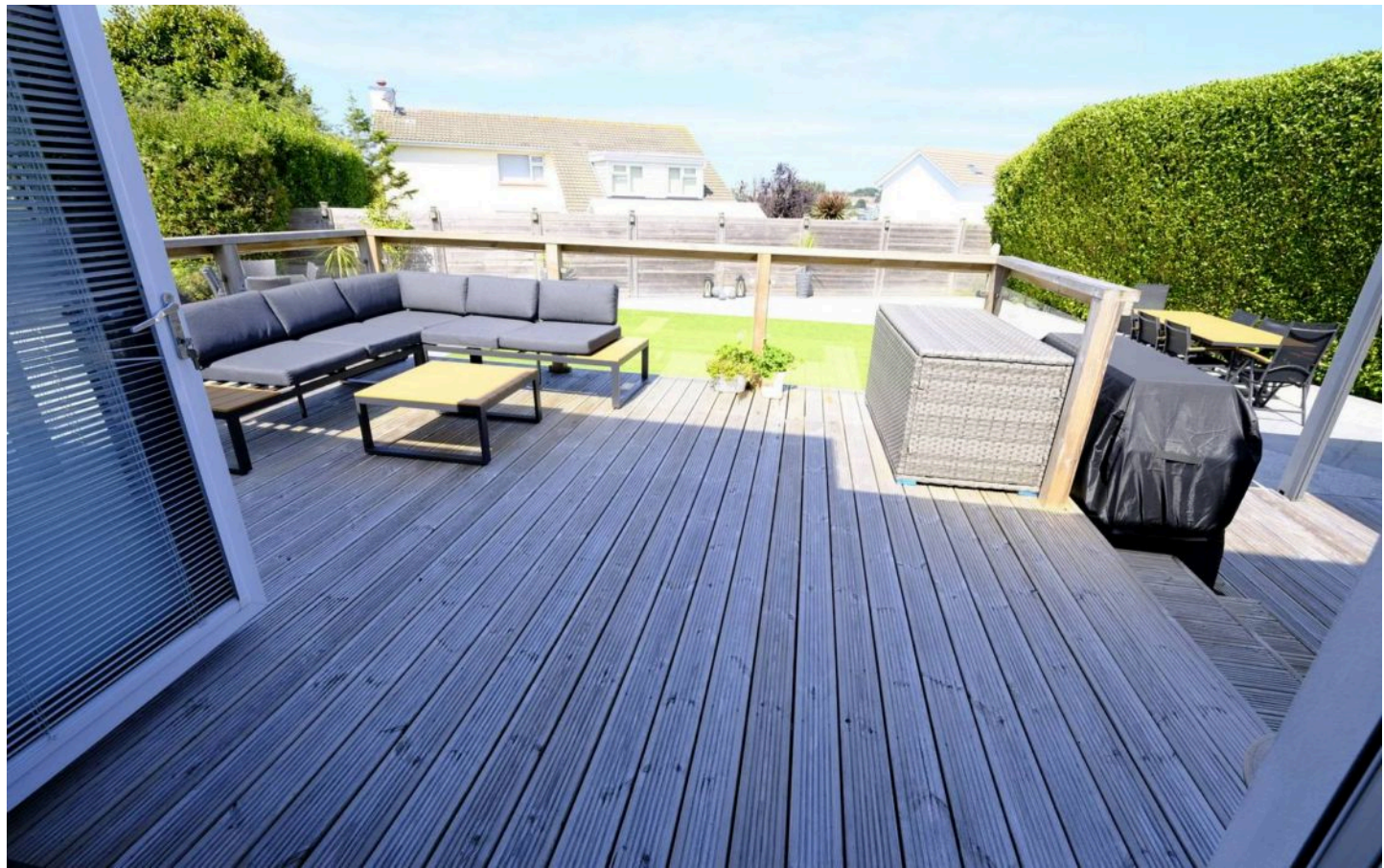
FINDING YOU A HOME SINCE 1972



# Strawberry Fields 8 Hautmont Estate, Le Mont Millais

St. Helier, Jersey

- Detached 4 bedroom 3 bathroom dormer bungalow
- Large South facing garden
- Fully renovated by the current owners
- Ideal for schools and Town
- Spacious shed ideal for storage or workshop
- Versatile property could be a 2 generation home or home with income
- Paved driveway with parking for 8 to 10 cars
- Stunning kitchen with separate utility room
- 3 receptions
- Great size 2086 sq ft
- Call Doug on 07700702585 or [doug@broadlandsjersey.com](mailto:doug@broadlandsjersey.com)





# Strawberry Fields 8 Hautmont Estate, Le Mont Millais

St. Helier, Jersey

Introducing this meticulously crafted 4-bedroom detached house, a stunning example of a fully renovated 4-bedroom, 3-bathroom dormer bungalow. Boasting a large South-facing garden, this property is a true testament to ideal family living and convenience. Sprawling across a great size of 2086 sq ft, this residence is a haven for those seeking a comfortable and ample living space. The property's charm is further accentuated by its three spacious receptions, offering various possibilities for relaxation and entertainment. The versatile layout of this home presents opportunities for a multi-generational living arrangement or the prospect of generating income through lettings. The property is thoughtfully complemented by a spacious shed, perfect for storage or as a workshop to cater to your various needs. Beyond the interiors, the paved driveway allows for parking up to 8-10 cars, providing ample space for guests and residents alike. With a stunning kitchen and separate utility room that exudes both style and functionality, this home stands as a beacon of modern design and practicality. Conveniently located near schools and town amenities, this property is the ideal haven for any discerning homeowner seeking comfort and accessibility.

The outside space of this exquisite property mirrors the same level of detail and care found within its interiors. Boasting a great size, low-maintenance garden, this outdoor retreat is perfect for hosting gatherings or simply enjoying the fresh air in tranquillity. The paved driveway, with room for 8-10 cars, offers instant kerb appeal and practicality for a bustling household.





### **Living**

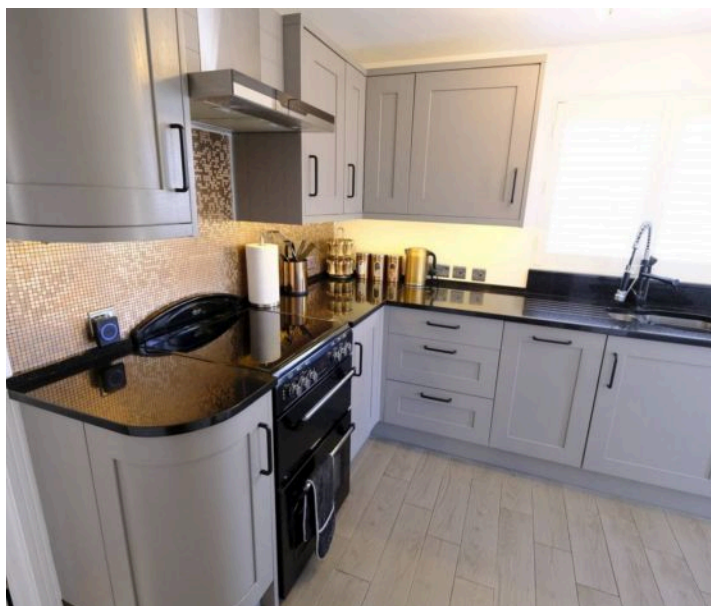
3 receptions, stylish new kitchen, utility room and cloakroom.  
Second kitchen.

### **Sleeping**

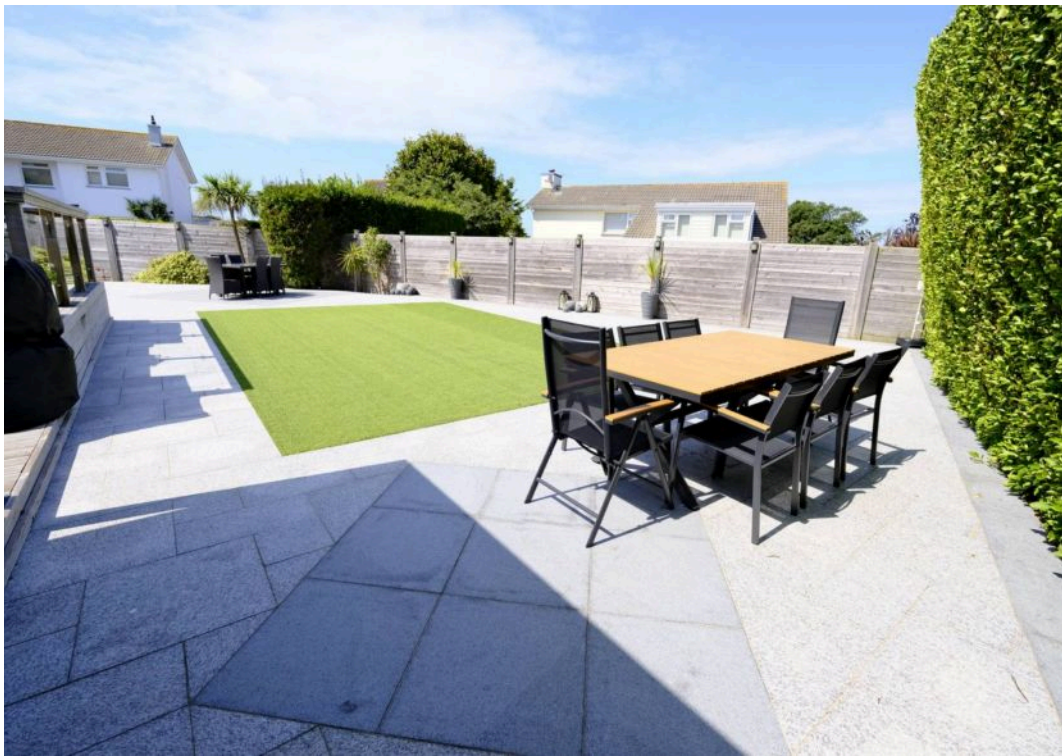
4 double bedrooms, 3 bathrooms.

### **Services**

All mains, double glazing and wet electric heating.

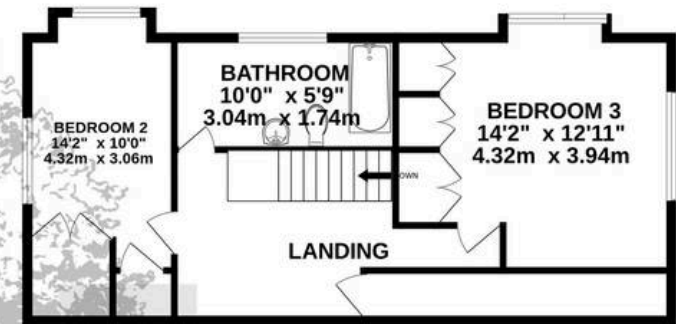
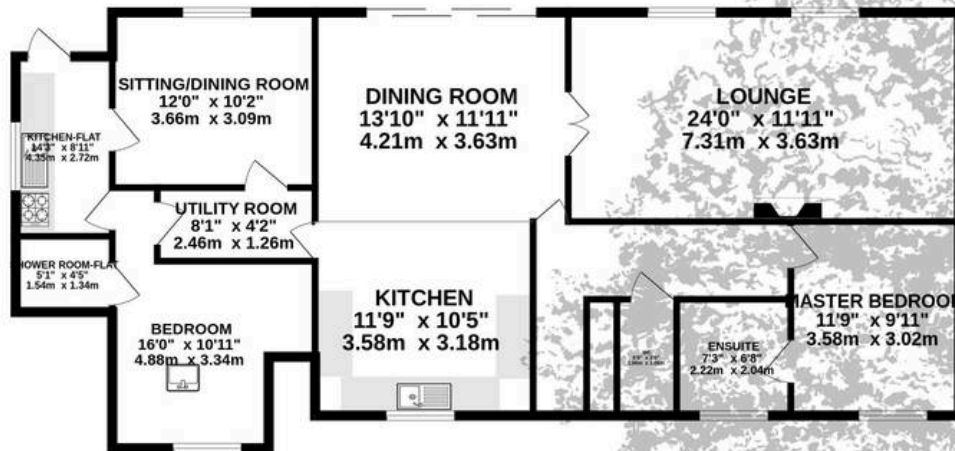






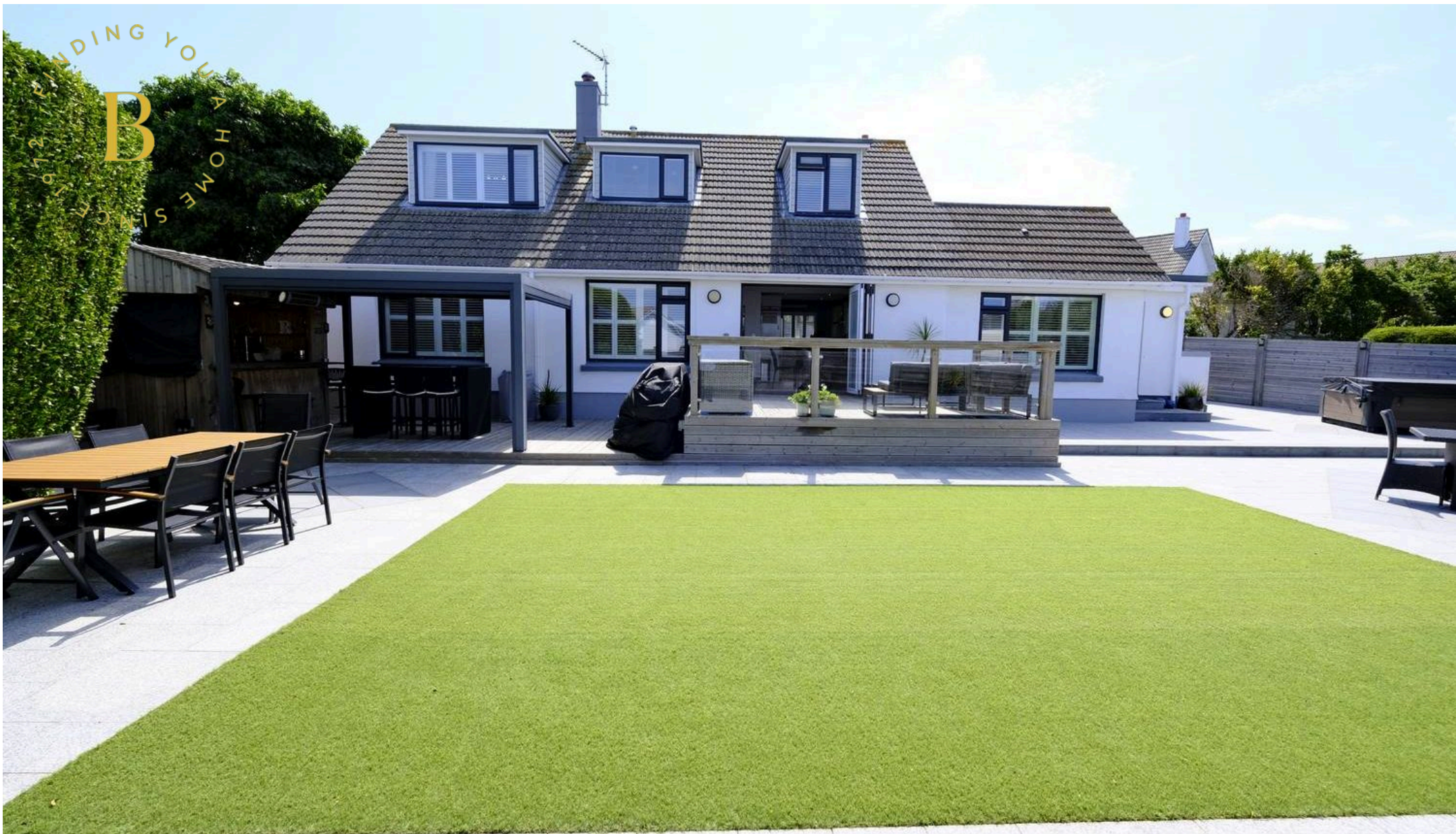
GROUND FLOOR

1ST FLOOR



Whilst every attempt has been made to ensure the accuracy of the floorplan contained here, measurements of doors, windows, rooms and any other items are approximate and no responsibility is taken for any error, omission or mis-statement. This plan is for illustrative purposes only and should be used as such by any prospective purchaser. The services, systems and appliances shown have not been tested and no guarantee as to their operability or efficiency can be given.  
Made with Metropix ©2025





## Broadlands

Broadlands Estates, Library Place - JE2 3NL

01534 880770 • [enquiries@broadlandsjersey.com](mailto:enquiries@broadlandsjersey.com) • [www.broadlandsjersey.com/](http://www.broadlandsjersey.com/)

# BROADLANDS

FINDING YOU A HOME SINCE 1972