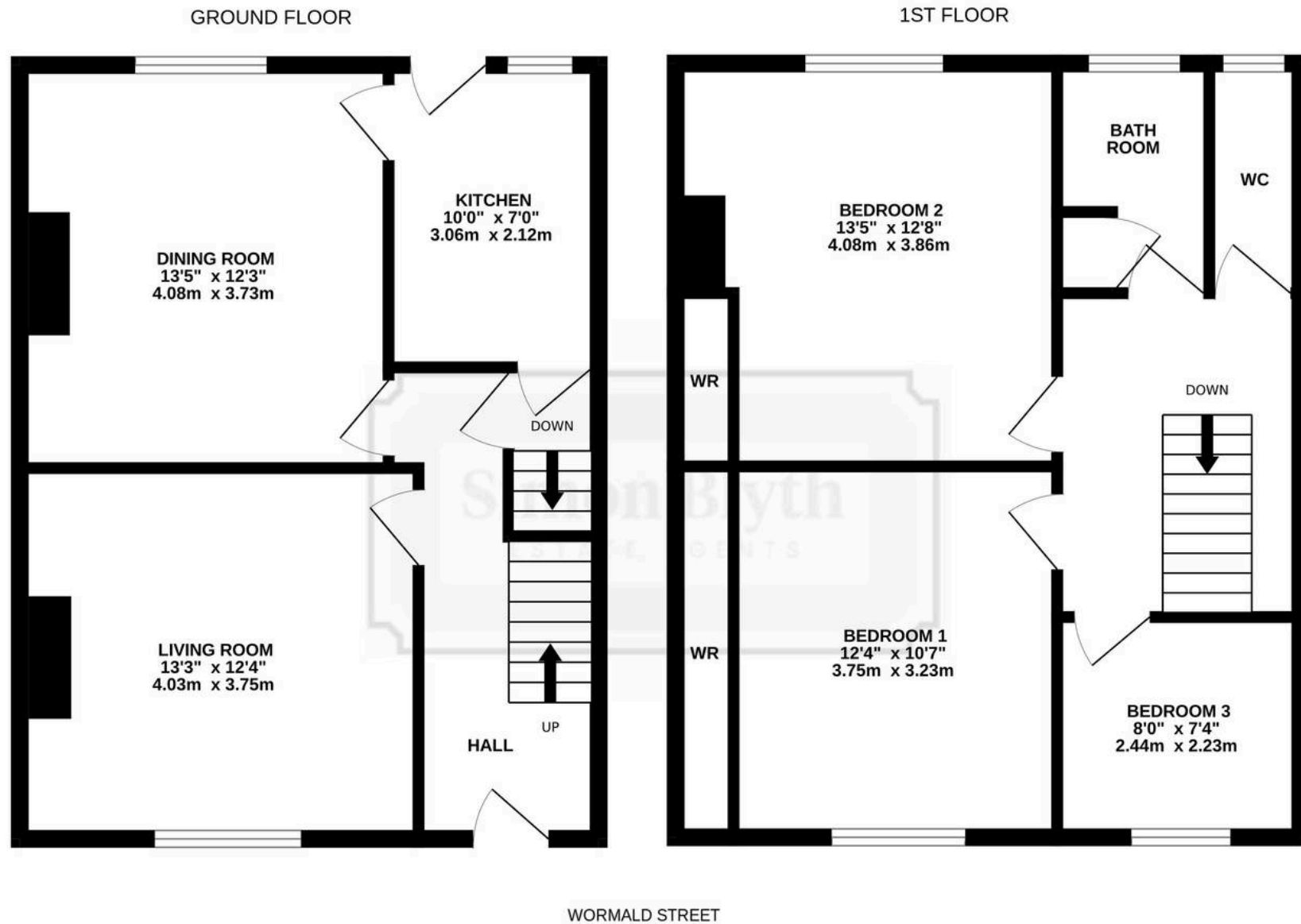




12 Wormald Street, Almondbury
Huddersfield

Offers in Region of **£190,000**



Whilst every attempt has been made to ensure the accuracy of the floorplan contained here, measurements of doors, windows, rooms and any other items are approximate and no responsibility is taken for any error, omission or mis-statement. This plan is for illustrative purposes only and should be used as such by any prospective purchaser. The services, systems and appliances shown have not been tested and no guarantee as to their operability or efficiency can be given.
Made with Metropix ©2025



12 Wormald Street

Almondbury, Huddersfield

Available with vacant possession and no onward chain is this appealing stone build three bedroom inner through terrace house constructed Circa 1924 and occupying a central position within the village and just a short walk from a variety of amenities.

The property will require a general programme of modernisation and updating and provides a well proportioned accommodation with pvcu double glazing and accommodation briefly comprising to the ground floor entrance hall, living room, dining room and kitchen. Basement with small cellar, first floor landing leading to three bedrooms, bathroom and separate w.c. Externally there are gardens laid out to both front and rear with the rear garden accessed via a passageway to one side shared with the neighbouring property.

Council Tax band: B

Tenure: Leasehold

- Vacant three bedroom inner through terrace
- Well proportioned accommodation overlooking a pleasant rear garden
- Central village location within walking distance of shops
- Requiring modernisation and updating



Entrance Hall

15' 8" x 5' 9" (4.78m x 1.75m)

With a pvcu and leaded stained glass double glazed door, there is a pvcu and leaded stained glass window over the door which provides additional natural light, there is a ceiling light point, ceiling coving, cloaks rail, electric storage heater and to one side a spindled staircase rises to the first floor. From the hallway access can be gained to the following rooms:-

Living Room

13' 3" x 12' 4" (4.04m x 3.76m)

With pvcu double glazed windows with leaded lights looking out over the front garden, there is a ceiling light point, ceiling coving, electric storage heater and as the main focal point of the room there is a fireplace with polished Oak surround together with a coal effect gas fire resting on a slate tiled hearth.

Dining Room

13' 5" x 12' 3" (4.09m x 3.73m)

This has a pvcu double glazed window looking out over the rear garden, there is a ceiling light point, picture rail and as the main focal point to the room there is a tiled fireplace with gas fire resting on a tiled hearth. To one side a door gives access to the kitchen.





Kitchen

10' 0" x 7' 0" (3.05m x 2.13m)

With a pvcu double glazed window looking out over the rear garden together with an adjacent timber door with single glazed window above, there is a ceiling light points, pvcu double glazed window, electric cooker point and fitted with base and wall cupboards, drawers, overlying worktops, inset single drainer stainless steel sink with chrome mixer tap and with a door giving access to the basement.

Basement

This can be accessed from either the kitchen or hallway with steps leading down to a small keeping cellar.

First Floor Landing

With a spindled balustrade, ceiling light point, loft access and electric storage heater. From the landing access can be gained to the following rooms:-

Bedroom One

10' 7" x 12' 4" (3.23m x 3.76m)

With a pvcu double glazed window looking out over the front garden, ceiling light point, picture rail and having a bank of fitted furniture including wardrobes, and dressing table with cupboard beneath.



Bedroom Two

13' 5" x 12' 8" (4.09m x 3.86m)

With a pvcu double glazed window looking out over the rear garden, there is a ceiling light point, picture rail, chimney breast with decorative fireplace and to the left hand side of the chimney breast there are fitted sliding door wardrobes with cupboard over.

Bedroom Three

8' 0" x 7' 4" (2.44m x 2.24m)

This is situated adjacent to bedroom one and has a pvcu double glazed window looking out over the front garden, there is also a ceiling light point.





Bathroom

8' 3" x 5' 0" (2.51m x 1.52m)

With a frosted pvcu double glazed window, part tiled walls which are floor to ceiling around the bath, cylinder cupboard, heated towel rail and fitted with a suite comprising panelled bath with bi-fold shower screen and electric shower fitting over together with a pedestal wash basin.

Separate W.C.

8' 3" x 2' 7" (2.51m x 0.79m)

This is situated adjacent to the bathroom and has ceiling light point, frosted pvcu double glazed window and low flush w.c.

Garden

To the front of the property there are stone gate posts with a timber hand gate opening onto a stone flagged pathway with three steps raising to the front door, adjacent to this there is a garden area with planted trees and shrubs. To the right hand side of the main entrance there is a passageway which is shared with the neighbouring property and this leads to a generous rear garden which has planted trees, flowers and shrubs together with a timber garden shed.

Additional Details

The property has pvcu double glazing The property is leasehold with the remainder of a 999 year lease from the 1st August 1924 with a nominal annual ground rent.

Directions

Using satellite navigation enter the postcode HD5 8NQ



VIEWING For an appointment to view, please contact the Huddersfield Office on 01484 651878 **BOUNDARY OWNERSHIP** The boundary ownerships and tenure of the property have not been checked on the title deeds for any discrepancies or rights of way if any (This is a standard statement on all our brochures due to the Property Misdescription's Act)

COPYRIGHT Unauthorised reproduction prohibited.

FREE VALUATIONS If you are thinking of a move then take advantage of our FREE valuation service, telephone our nearest office for a prompt and efficient service.

CONSUMER PROTECTION FROM UNFAIR TRADING REGULATIONS 2008 Simon Blyth for themselves and for the vendors or lessors of this property, whose agent they are, have made every effort to ensure the details given have been prepared in accordance with the above act and to the best of our knowledge give a fair and reasonable representation of the property. Please note: 1. There is a six inch measurement tolerance or metric equivalent and the measurements given should not be entirely relied upon and purchasers must make their own measurements if ordering carpets, curtains or other equipment. 2. None of the main services, i.e. gas, water, electricity, drainage or central heating system (if any) have been tested in any way whatsoever. This also includes appliances which are to be left in situ by the vendors.

PURCHASERS MUST SATISFY THEMSELVES AS TO THE CONDITION AND EFFECTIVENESS OF ANY SUCH APPLIANCES OR SERVICES FLOOR PLANS NOT TO SCALE – FOR IDENTIFICATION PURPOSES ONLY.

MAILING LIST Keep up to date with all our new properties. Let us know your price range, the area and type of home you require by registering on our mailing list.

MORTGAGE ADVICE Simon Blyth Estate Agents understand that getting appropriate mortgage advice is a crucial part of the home buying process. Finding a suitable mortgage has always been something of a daunting experience which is why we would like to introduce you to our independent mortgage advisors. They provide tailored mortgage solutions through a wealth of experience in the mortgage and property market and offer access to the full unrestricted range of products available. Our advisors are dedicated to providing ongoing guidance and advice throughout the entire house purchase process keeping you, your estate agent and solicitor involved with continual updates on the progress. Once in your new home they will be available for ongoing support to build a long term relationship for your future mortgage planning. Your home may be repossessed if you do not keep up repayments on your mortgage. For friendly expert advice on your mortgage requirements, or to discuss the potential of making your ideas a reality then please call in or phone for a chat.

OFFICE OPENING TIMES 7 DAYS A WEEK Monday to Friday – 8:45 am to 5:30 pm Saturday – 9:00 am – 4:00 pm Sunday – 11:00 am – 2:00 pm



Simon Blyth Estate Agents

Simon Blyth Estate Agents, 26 Lidget Street – HD3 3JP

01484 651878

huddersfield@simonblyth.co.uk

www.simonblyth.co.uk/

Wakefield	Huddersfield	Holmfirth	Kirkburton	Penistone	Sheffield	Barnsley	Pontefract	Leeds	Halifax
01924 361631	01484 651878	01484 689689	01484 603399	01226 762400	01143 216 590	01226 731730	01977 800259	0113 4689331	01422 417000