



Alexandra Grove, N4 2LG
£540,000

**DAVID
ANDREW**

your
most
valuable
asset

Alexandra Grove, N4 2LG

This spacious two-bedroom period flat spanning 622 sq ft/ 57.8 sq m is located on the first floor of a Victorian Conversion on Alexandra Grove, a quiet, no through road. The flat is spacious and light-filled, with a separate kitchen and reception room, with access to the large shared garden, perfect for relaxing or gardening.

Both double bedrooms are generously sized with ample room for storage. The flat is offered chain-free and presents a wonderful opportunity for first time buyers looking to buy a period property in a fantastic location.

Set in a prime location, you'll have parks, trendy cafes, shops, and excellent transport links at your doorstep. With the Underground (Piccadilly and Victoria Line), National Rail, and buses nearby, commuting to central London is a breeze. A perfect home for those seeking charm, convenience, and connectivity in North London.

Council Tax band: D

Tenure: Leasehold

EPC Energy Efficiency Rating: C

- 622 sq ft / 57.8 sq m
- Two double bedrooms
- Offered Chain Free
- Period Conversion
- Communal Garden
- Flooded with natural light
- 141 years remaining on the lease
- Excellent Transport Links
- Great Layout and Well Presented Flat





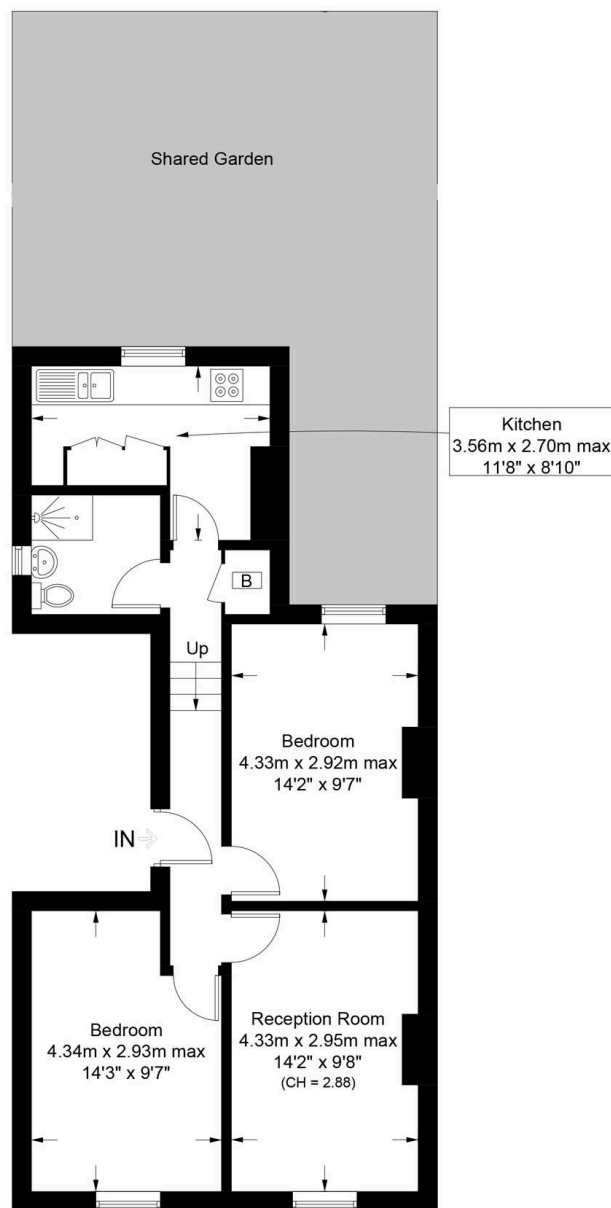




Alexandra Grove, N4

Approximate Gross Internal Area = 622 sq ft / 57.8 sq m

**DAVID
ANDREW** | your
most
valuable
asset



First Floor

This plan is for layout guidance only. Not drawn to scale unless stated. Windows and door openings are approximate. Whilst every care is taken in the preparation of this plan, please check all dimensions, shapes and compass bearings before making any decisions reliant upon them. (ID1224405)



**Certified
Property
Measurer**

**DAVID
ANDREW** | your
most
valuable
asset

has been exercised in the
of these particulars,
out the property must not be
as representations of
fact. Prospective applicants
and rely upon their own
id those of professional
s. David Andrew Estates
bility for any error contained
in these particulars.

Archway Office

671 Holloway Road
London, N19 5SE

T (0)20 7619 3750

Highbury Office

90 Highbury Park
London, N5 2XE

T (0)20 7354 9111

Finsbury Park Office

167 Stroud Green Road
London, N4 3PZ

T (0)20 7281 2000

Property Management Office

235 Blackstock Road
London, N5 2LL

T (0)20 7354 9222

scan to book
a viewing

