



Mansfield Court, Mansfield Road
£140,000



Prepare to be amazed by this tasteful first-floor apartment located in a highly popular area on the edge of Mapperley Park. Featuring modern amenities within a period complex, this property boasts a contemporary edge that is sure to impress. Step into this refurbished apartment ideal for first-time buyers or savvy investors, with two bedrooms offering ultimate space and comfort. The modern shower room is a touch of luxury, perfect for unwinding after a long day. Being within walking distance to local amenities and having easy access to Nottingham City Centre, this place is at the heart of it all! Enjoy the luxury of off-road parking available as well as communal gardens, providing a peaceful space to enjoy the outdoors. Don't miss the chance to make this delightful apartment your own and experience city living at its finest. The property boasts a rare balance of urban convenience and a peaceful retreat.

- Tastefully Decorated
- First Floor Apartment
- Modern Bathroom
- Walking Distance to the City Centre
- Off Road Parking Available
- Two Bedrooms
- Ideal for First Time Buyers
- Ideal for Investors
- Communal Gardens





Living Room

14' 8" x 11' 10" (4.48m x 3.61m)

A bright and spacious living room with fresh carpets and featured fireplace.

Bedroom One

11' 11" x 10' 10" (3.63m x 3.31m)

Double bedroom, optional open plan with living room. Fresh carpets and decor with plenty of natural light.

Bedroom Two

8' 2" x 9' 6" (2.49m x 2.90m)

Another generous bedroom with fresh decor and carpets. ideal for single bed or office space.

Kitchen

5' 10" x 6' 3" (1.79m x 1.91m)

A modern kitchen features a range of wall and base units, an integral oven with metro tiled splashback, and an electric extractor fan.

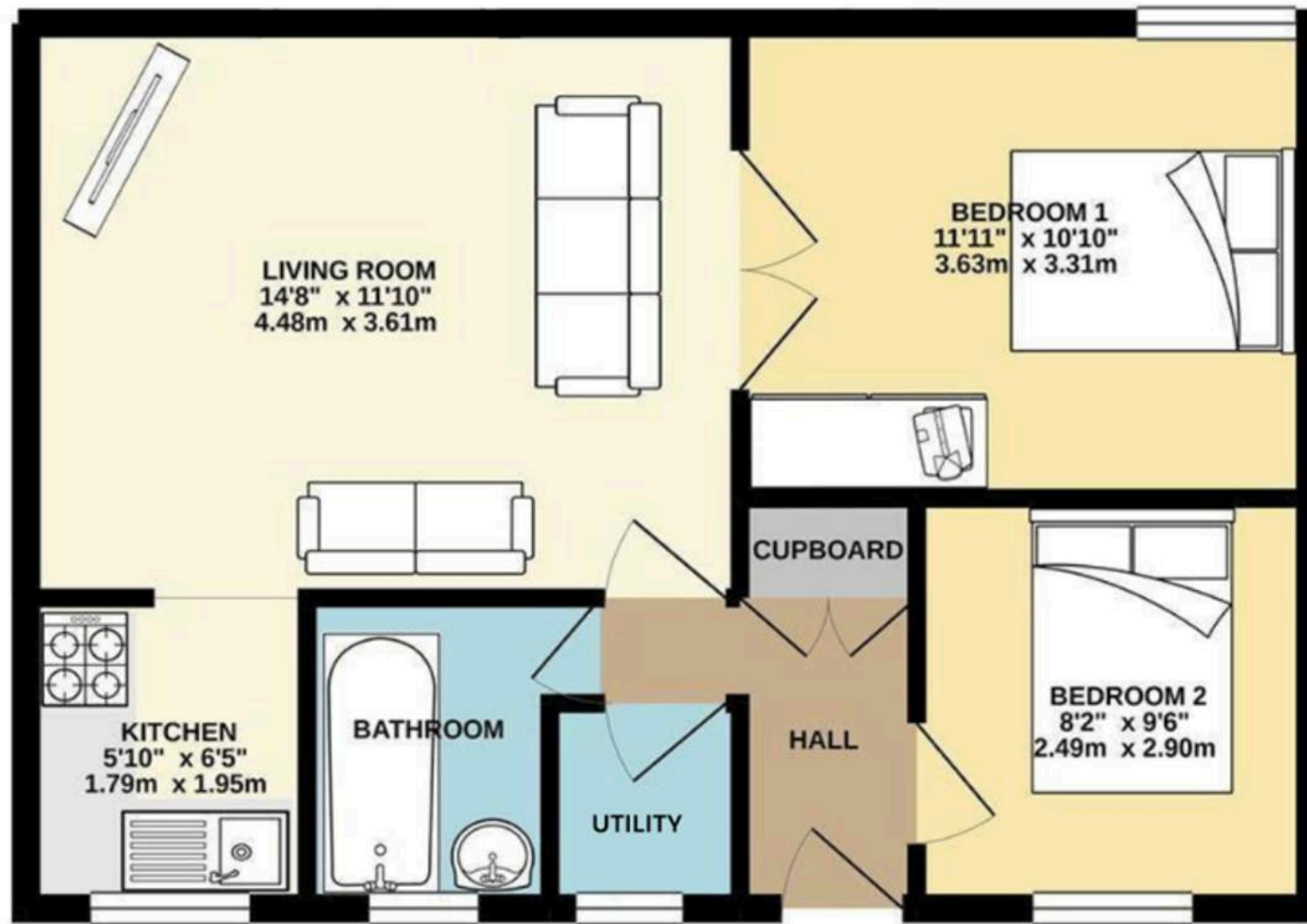
Bathroom

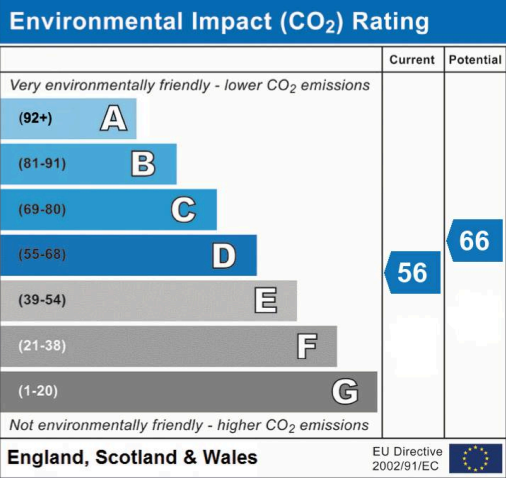
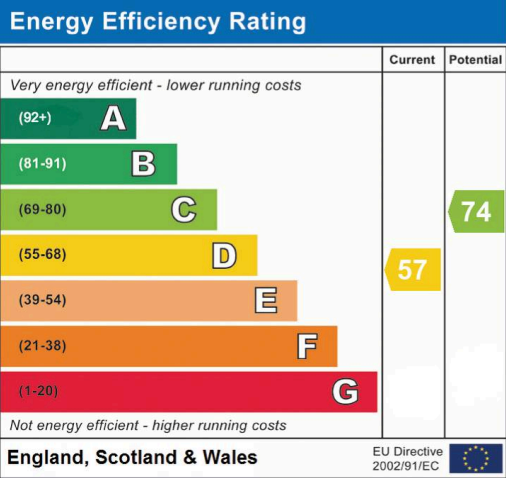
The recently fitted shower room is tiled throughout with a walk-in shower cubicle, hand basin, and W.C. This is another modern space ready to be enjoyed by the new owners.

Additional Information

- Council Tax Band: A
- Property Tenure: Leasehold
- Service Charge: £1,682 pa
- Ground Rent: £25.00 pa
- Property Type: Apartment
- Parking: Single Garage









Comfort Estates

Comfort Estates, 47 Derby Road - NG1 5AW

0115 9338997 • info@comfortestates.co.uk • www.comfortestates.co.uk