



Marlborough Road, N19  
£2,350 pcm

**DAVID  
ANDREW**

your  
most  
valuable  
asset



A spacious, bright and homely two double bedroom apartment set on the second floor of this period conversion close to Archway Station.

Internally the property boasts a open plan reception room with a fully fitted modern kitchen, two double bedrooms, ample natural light, good amount of storage, wooden flooring throughout, period features, modern fitted bathroom, gas central heating and newly installed double glazed windows.

Located on one the popular quiet residential roads off of Holloway Road, it's only short walk to Holloway Overground station and Archway (Northern Line) tube station. You're spoilt for choice with an array of trendy shops and restaurants. Offered Furnished, Available 20th September.

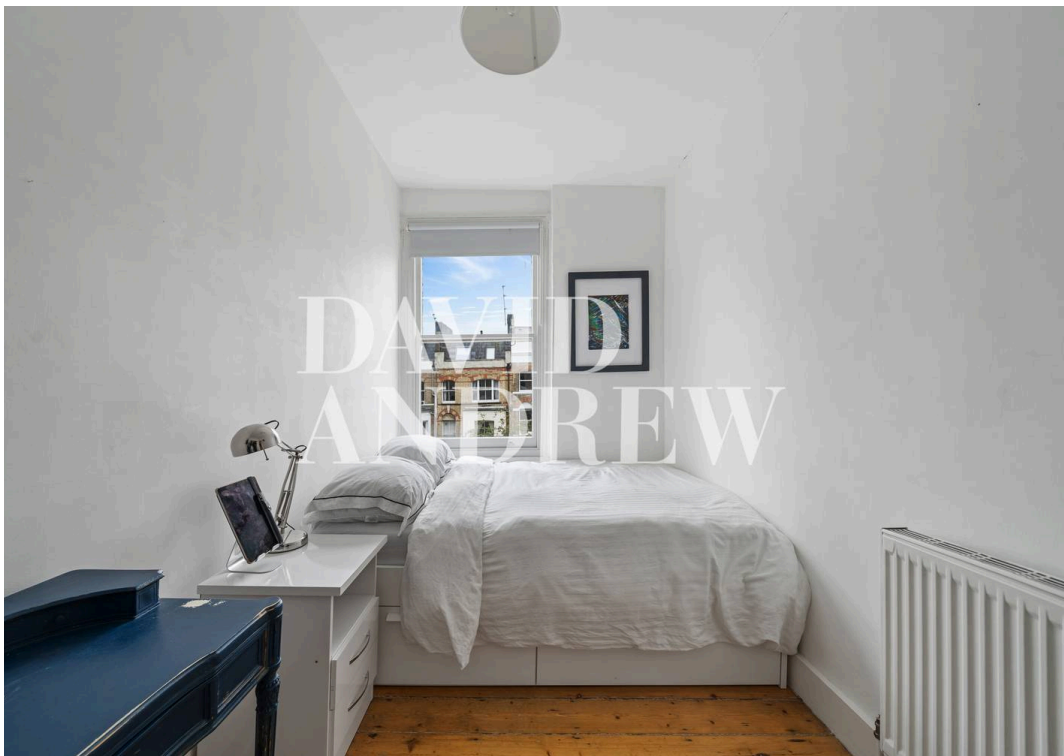
Council Tax band: C

EPC Energy Efficiency Rating: C

- Period Conversion
- Two Double Bedrooms
- Open Plan Living Space
- Fitted Modern Kitchen
- Fully Tiled Bathroom
- Wooden Floors Throughout
- Tree Lined Street
- Short walk to Archway Tube (Northern Line)
- Offered Furnished
- Available 20 September







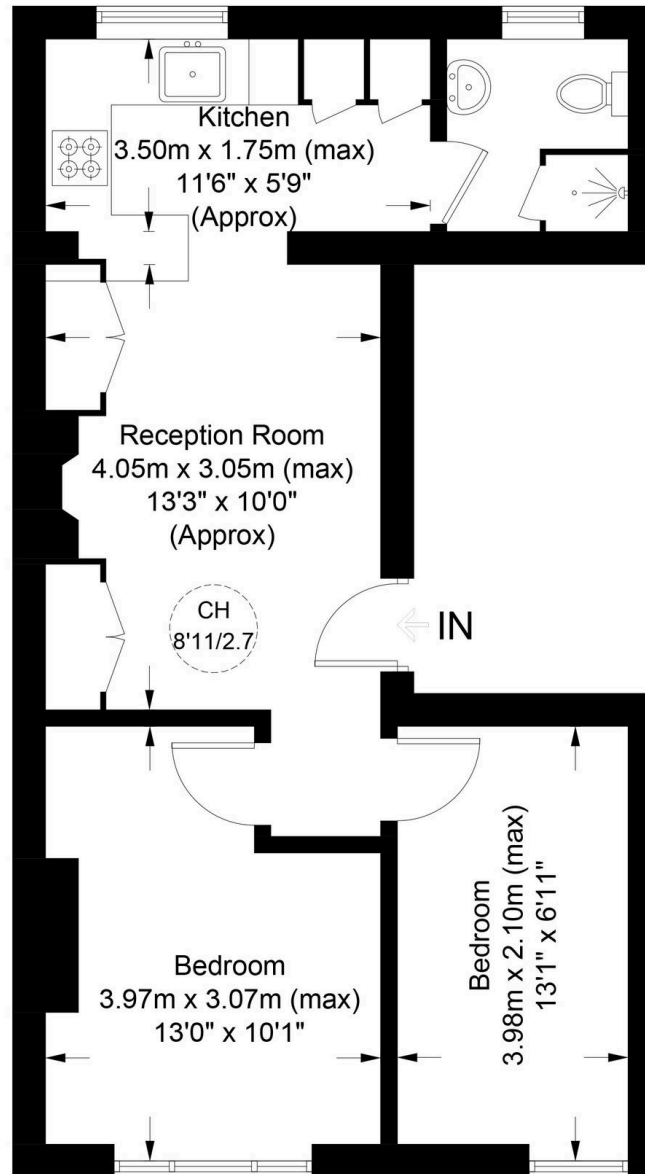


## Marlborough Road, N19

Approximate Gross Internal Area = 470 sq ft / 43.7 sq m

**DAVID  
ANDREW**

your  
most  
valuable  
asset



### Second Floor

scan to book  
a viewing



**Certified  
Property  
Measurer**

This plan is for layout guidance only. Not drawn to scale unless stated. Windows and door openings are approximate. Whilst every care is taken in the preparation of this plan, please check all dimensions, shapes and compass bearings before making any decisions reliant upon them. (ID1019927)

**DAVID  
ANDREW**

your  
most  
valuable  
asset

has been exercised in the  
of these particulars,  
out the property must not be  
as representations of  
fact. Prospective applicants  
and rely upon their own  
id those of professional  
s. David Andrew Estates  
bility for any error contained  
in these particulars.

#### Archway Office

671 Holloway Road  
London, N19 5SE

T (0)20 7619 3750

#### Highbury Office

90 Highbury Park  
London, N5 2XE

T (0)20 7354 9111

#### Finsbury Park Office

167 Stroud Green Road  
London, N4 3PZ

T (0)20 7281 2000

#### Property Management Office

235 Blackstock Road  
London, N5 2LL

T (0)20 7354 9222



**safeagent**