



16 Loudoun Place, Symington, KA1 5RP

Offers in Excess of **£120,000**

DONALD
ROSS
RESIDENTIAL



16 Loudoun Place

Symington, KA1 5RP

Beautifully presented three bedroom end terrace villa in peaceful residential area with landscaped rear garden, spacious dining kitchen, and excellent access to local amenities, schooling and transport links.

Council Tax band: B

Tenure: Freehold

EPC Energy Efficiency Rating: C

EPC Environmental Impact Rating: C

- 3-bedroom end terrace home in popular residential area
- Spacious lounge with dual-aspect windows and modern decor
- Spacious and stylish kitchen with dining space
- Three generously proportioned bedrooms
- Family bathroom with over-bath shower
- Landscaped rear garden with patio and artificial lawn
- Quiet location within walking distance of local amenities and schooling
- Close proximity to A77 providing direct access to Ayr, Kilmarnock & Glasgow



















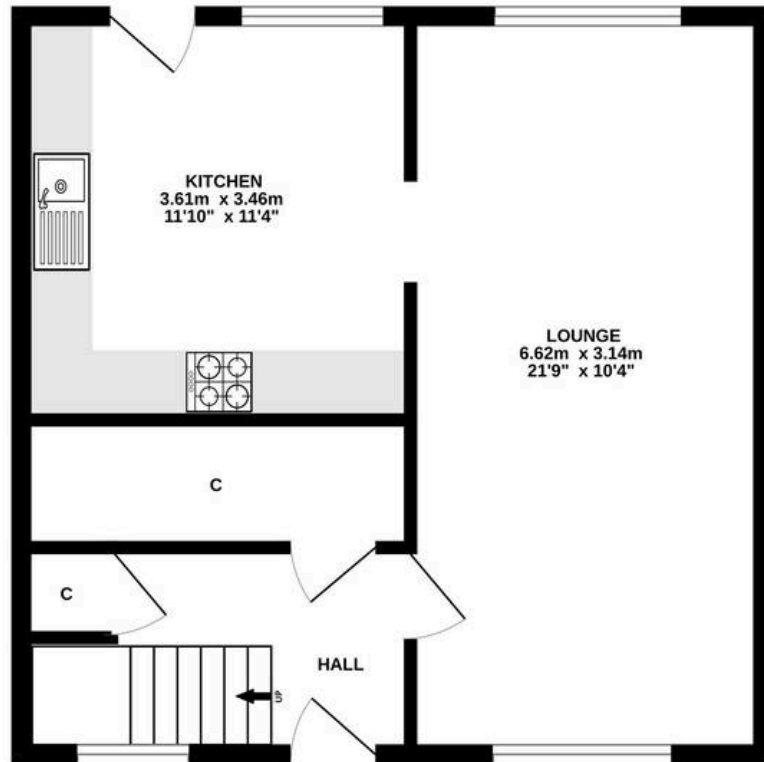




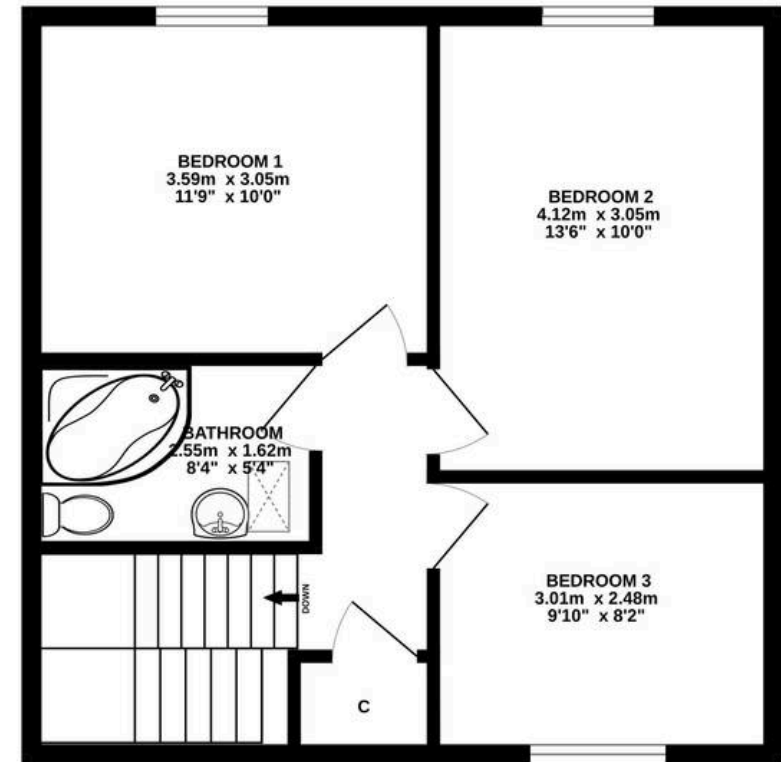




GROUND FLOOR



1ST FLOOR



ALL SIZES TAKEN AT WIDEST POINTS

Whilst every attempt has been made to ensure the accuracy of the floorplan contained here, measurements of doors, windows, rooms and any other items are approximate and no responsibility is taken for any error, omission or mis-statement. This plan is for illustrative purposes only and should be used as such by any prospective purchaser. The services, systems and appliances shown have not been tested and no guarantee as to their operability or efficiency can be given.
Made with Metropix ©2025



Donald Ross Residential Ayr

Donald Ross, 1 Beresford Terrace – KA7 2ER

01292 288222 • office@donaldross.co.uk • www.donaldross.co.uk

While every effort has been made to ensure accuracy, buyers should independently verify all details and review the Home Report before submitting an offer. No warranty or representation is given regarding the property, and neither the agent nor the seller accepts responsibility for any inaccuracies. Buyers must satisfy themselves on all legal aspects.