



Haywards Road, Cheltenham - GL52 6RH  
Cheltenham

Guide Price £550,000





## Haywards Road

Cheltenham, Cheltenham

Council Tax band: D

Tenure: Freehold

EPC Energy Efficiency Rating: D

EPC Environmental Impact Rating: D

- Off-Street Parking
- Conservatory and Terrace
- Elegant Four-Storey Period Townhouse
- Versatile Living and Entertaining Spaces
- West-Facing Garden
- High Ceilings and Bay Windows







Cook Residential is delighted to present this period four-storey end-of-terrace townhouse, ideally located in the sought-after Charlton Kings area. With abundant period features and versatile spaces over four floors, this home offers expansive living and entertaining spaces, including a conservatory, garden terrace, and a basement. Enjoy the charm of high ceilings, bay windows, a wood-burning fireplace, and a beautifully landscaped west-facing garden. A rare gem offered as Freehold and ready for its next owners.

**Entrance Hallway:** Upon entry, the hallway sets an elegant tone with high ceilings and classic detailing. It provides access to the ground-floor rooms, including the living room, dining room, kitchen, and conservatory.

**Living Room:** The spacious front-aspect living room boasts a feature bay window, which fills the room with natural light. The room's high ceilings and intricate cornicing complement the original character, while the feature wood-burning fireplace with a walnut surround creates a cozy focal point. This makes this space ideal for relaxation and welcoming guests.

**Dining Room:** Opened up to flow seamlessly from the living room, the dining room is perfect for entertaining. This rear-aspect room maintains high ceilings, creating a bright and spacious atmosphere. With ample room for a dining table and a potential fireplace, this space is designed for hosting family gatherings or dinner parties with ease.

**Kitchen:** Located at the rear of the house, this galley-style kitchen blends modern convenience with traditional charm. Exposed brickwork above the built-in hob adds a touch of character, while the wood-effect flooring enhances warmth. The kitchen features a range of wall and base units, a built-in oven, a two-basin ceramic sink, and room for a fridge, freezer, and dishwasher.

**Conservatory:** Accessed from the kitchen, the conservatory is a delightful space for relaxation, with custom blinds and tiled effect flooring. Leading out to a raised wooden terrace overlooking the west-facing garden, this area provides an ideal setting for morning coffee or summer entertaining.

**Bedroom Two:** A generous double bedroom with views over the garden, carpeted flooring, and plenty of space for storage, offering a peaceful retreat.

**Bedroom Three:** Another spacious double bedroom with carpeted flooring, this front-aspect room is bright and inviting, perfect for family or guest accommodation.

**Bedroom Four:** Ideal for use as an office, nursery, or single bedroom, this front-aspect room features carpeted flooring and ample natural light.

**Family Bathroom:** The rear-aspect bathroom is both stylish and functional. It features a bathtub with an overhead shower, a vanity sink with storage, and a storage cupboard housing the boiler for added convenience.

**Primary Bedroom:** Located in the converted loft, this master suite features built-in storage in the eaves, carpeted flooring, and Velux windows that flood the space with natural light. This spacious room offers privacy and comfort, perfect as a tranquil sanctuary at the top of the house.

**Basement:** The basement level enhances this property's versatility. It offers additional storage at the front of the house and is currently used office space with access to the garden. The basement does require damp proofing works.

**Utility Area:** With space for a washer and dryer, a sink, and windows that bring in ample light, the utility room is both functional and convenient. There's also an external access point, adding to the versatility of this lower level.

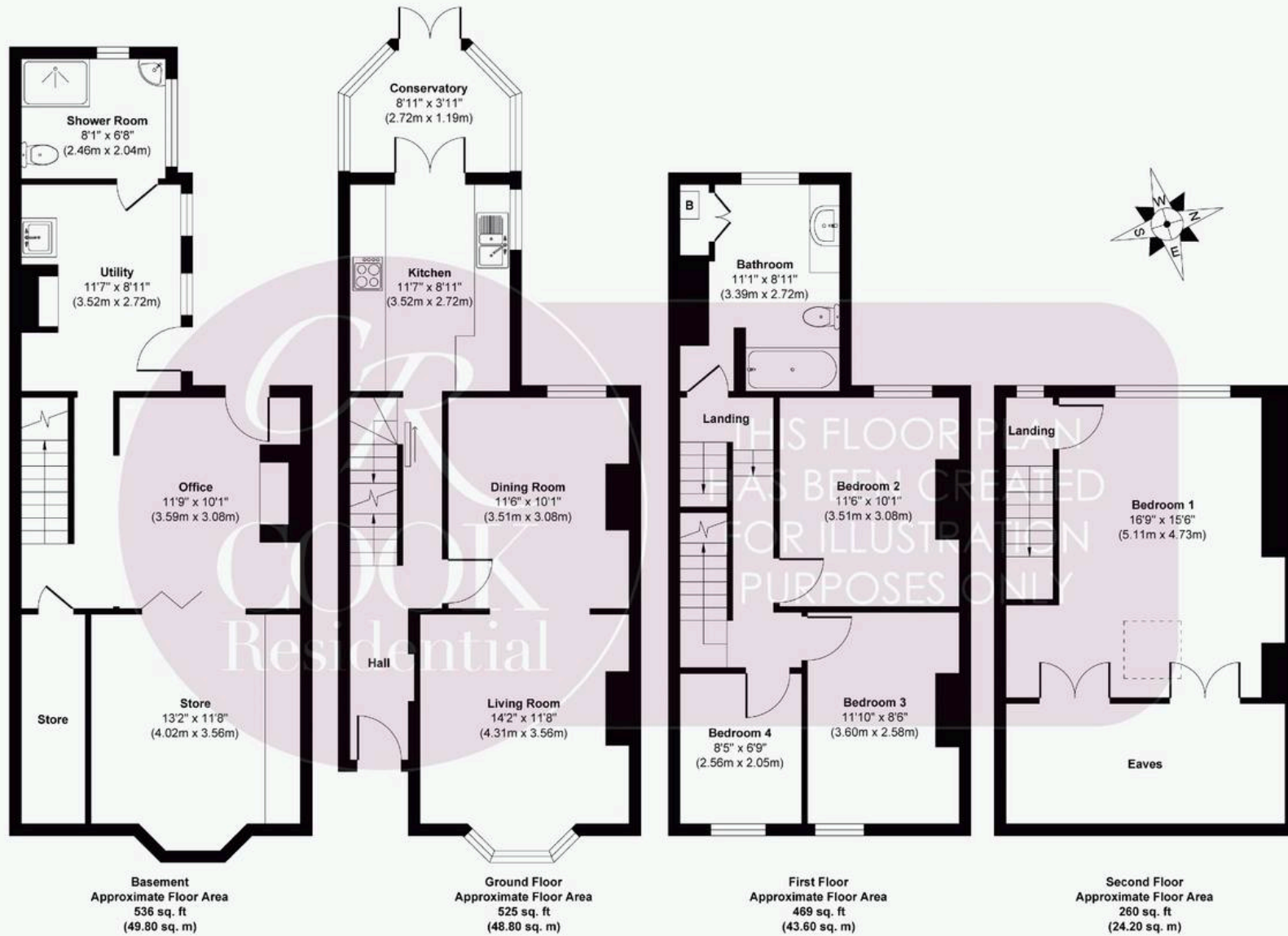
**Shower Room:** A door within the utility room leads to a convenient shower room complete with a WC and sink, adding further functionality to the basement level.

**Rear Garden:** The mature garden is bordered by shrubs and hedges, creating a sense of privacy and tranquillity. A lush lawn is perfect for children's play or relaxing in the sun, while side access provides convenient entry to the front of the property. Stairs lead up to the raised terrace, offering views of the west-facing garden.

**Parking:** The property benefits from a front driveway with space to park at least one car.

Charlton Kings is ideally located towards the east of Cheltenham noted for its fantastic range of primary and secondary schools, including the renowned Balcarras Academy and Charlton Kings infant and junior schools.





**Approx. Gross Internal Floor Area 1790 sq. ft / 166.40 sq. m**

Produced by Elements Property







## Cook Residential

Cook Residential, 4 Tebbit Mews Winchcombe Street – GL52 2NF

01242 500259 • [enquiries@cookresidential.co.uk](mailto:enquiries@cookresidential.co.uk) • [cookresidential.co.uk](http://cookresidential.co.uk)

For more detailed information please refer to the Cook Residential website. All information regarding the property details, including its position on Freehold, will be confirmed between vendor and purchaser solicitors. All measurements are approximate and for guidance purposes only.