



FINDING YOU A HOME  
SINCE 1972  
B

9 Chateau Valeuse, La Rue de la Valeuse, St. Brelade  
£435,000

**BROADLANDS**  
FINDING YOU A HOME SINCE 1972

## 9 Chateau Valeuse, La Rue de la Valeuse

St. Brelade, Jersey

- Excellent 1 bedroom apartment in St Brelades Bay
- Short stroll to the beach
- Open plan living
- Lift access
- Parking, store, and communal garden
- Sole Agent
- Contact [Harry@broadlandsjersey.com](mailto:Harry@broadlandsjersey.com) for access



## 9 Chateau Valeuse, La Rue de la Valeuse

St. Brelade, Jersey

Presenting a 1-bedroom apartment nestled in St Brelades Bay. With open plan living. Ideal for those seeking a low maintenance home, this apartment is merely a short leisurely stroll away from the pristine beach, it embraces coastal lifestyle.

With lift access for convenience, parking and a short walk to the beach. The location is unmatched. Close to many amenities, you do not need to go far for any of your needs. Contact [Harry@broadlandsjersey.com](mailto:Harry@broadlandsjersey.com) for access.





### **Living**

Open plan living space with lightwells and a juliet balcony. Ample space for dining table and sofa.

### **Sleeping**

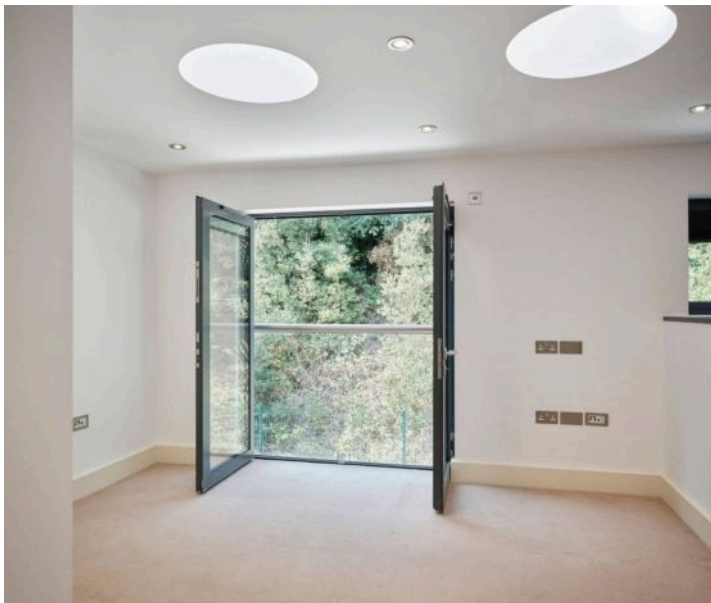
Double bedroom with fitted wardrobes and a large bathroom.

### **Services**

Service charge TBC. Wet electric underfloor heating.

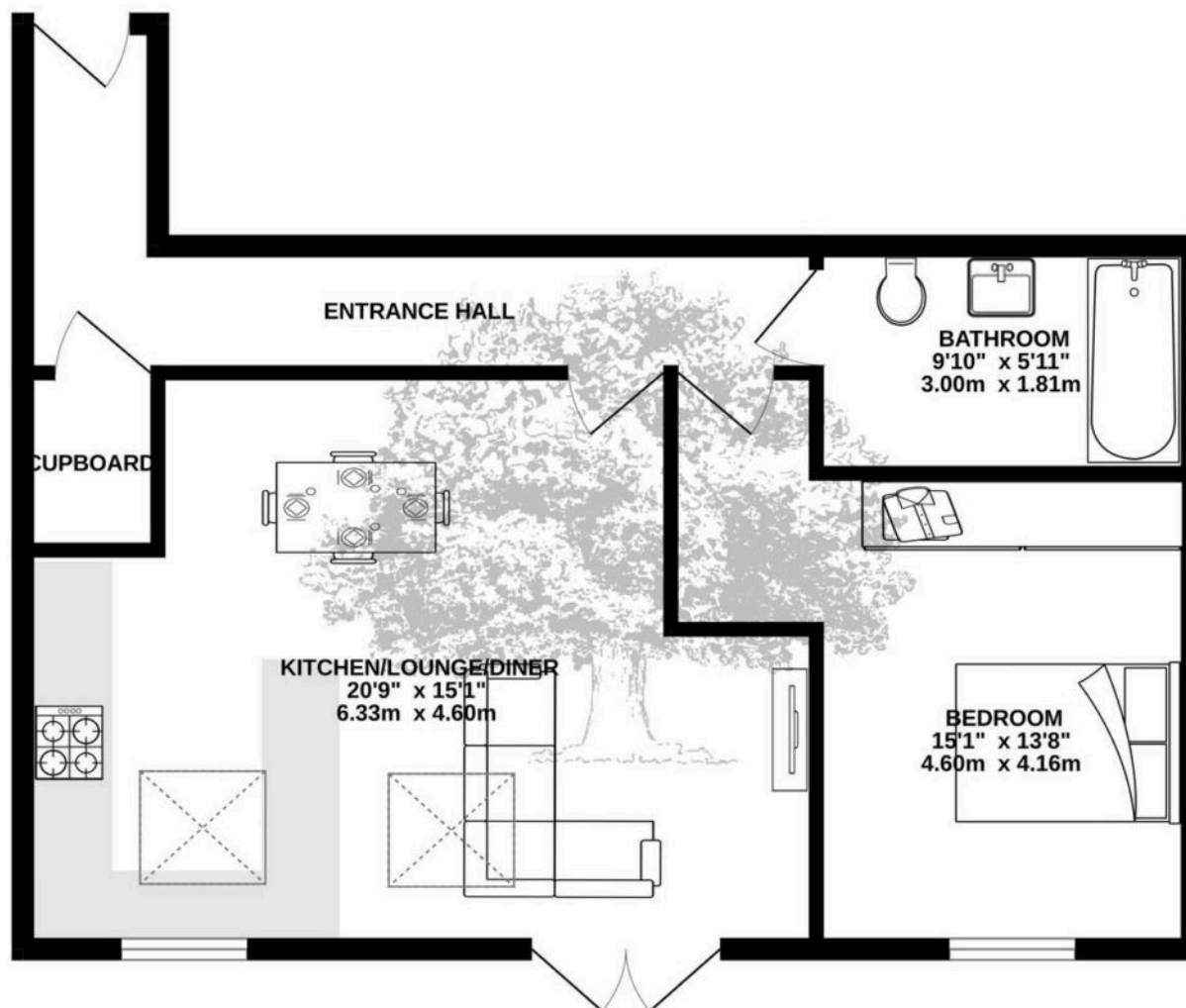
### **Parking**

Designated parking and visitor parking.





GROUND FLOOR  
583 sq.ft. (54.2 sq.m.) approx.



TOTAL FLOOR AREA : 583 sq.ft. (54.2 sq.m.) approx.

Whilst every attempt has been made to ensure the accuracy of the floorplan contained here, measurements of doors, windows, rooms and any other items are approximate and no responsibility is taken for any error, omission or mis-statement. This plan is for illustrative purposes only and should be used as such by any prospective purchaser. The services, systems and appliances shown have not been tested and no guarantee as to their operability or efficiency can be given.  
Made with Metropix ©2025



## Broadlands

Broadlands Estates, Library Place - JE2 3NL

01534 880770 • [enquiries@broadlandsjersey.com](mailto:enquiries@broadlandsjersey.com) • [www.broadlandsjersey.com/](http://www.broadlandsjersey.com/)

# BROADLANDS

FINDING YOU A HOME SINCE 1972