



11 Chateau Valeuse, La Rue de la Valeuse, St. Brelade
£1,250,000

BROADLANDS
FINDING YOU A HOME SINCE 1972

11 Chateau Valeuse, La Rue de la Valeuse

St. Brelade, Jersey

- Large, 3rd floor apartment in St Brelades Bay
- Impressive open plan living space with 2 balconies
- 2 bedroom, 2 bathroom, both with balcony access
- Sea views
- Walking distance to the beach
- Communal garden
- Garage and parking, visitor parking, store cupboard
- Sole Agent
- Contact Harry@broadlandsjersey for more information



11 Chateau Valeuse, La Rue de la Valeuse

St. Brelade, Jersey

A spacious 2 bedroom apartment located in the heart of St Brelades Bay. Situated on the 3rd floor, this apartment has a large open plan living area perfect for relaxing or entertaining guests, with two balconies for you to enjoy morning coffees or evening sunsets. The apartment features 2 bedrooms and 2 bathrooms, each with their own balcony access and stunning sea view.

With the beach just a short stroll away, this property is ideal for those seeking a coastal lifestyle. With easy access to the beach, and a short drive to many amenities, it is an ideal 'lock up and leave'. Contact harry@broadlandsjersey for more information.





Living

Superb, open plan living space with fully equipped kitchen, space for a large dining table and room for a large sofa. Access to both balconies and views across St Brelades Bay.

Sleeping

Two large double bedrooms with fitted wardrobes, corresponding bathrooms and access to balconies. Sea views from both.

Additional Rooms

Utility room and two large store cupboards.

Outside

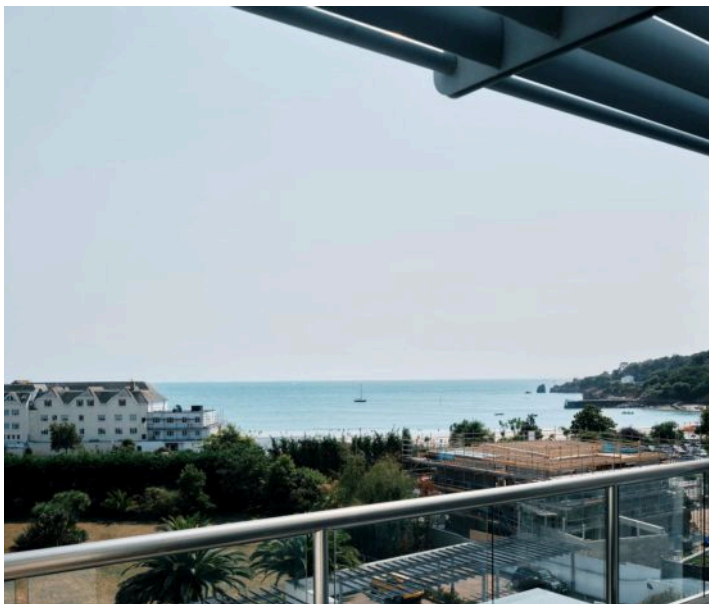
2 Sea Facing balconies accessed from either the living room or corresponding bedroom. Communal gardens.

Services

Service Charge TBC Wet electric underfloor heating. Fully Double Glazed.

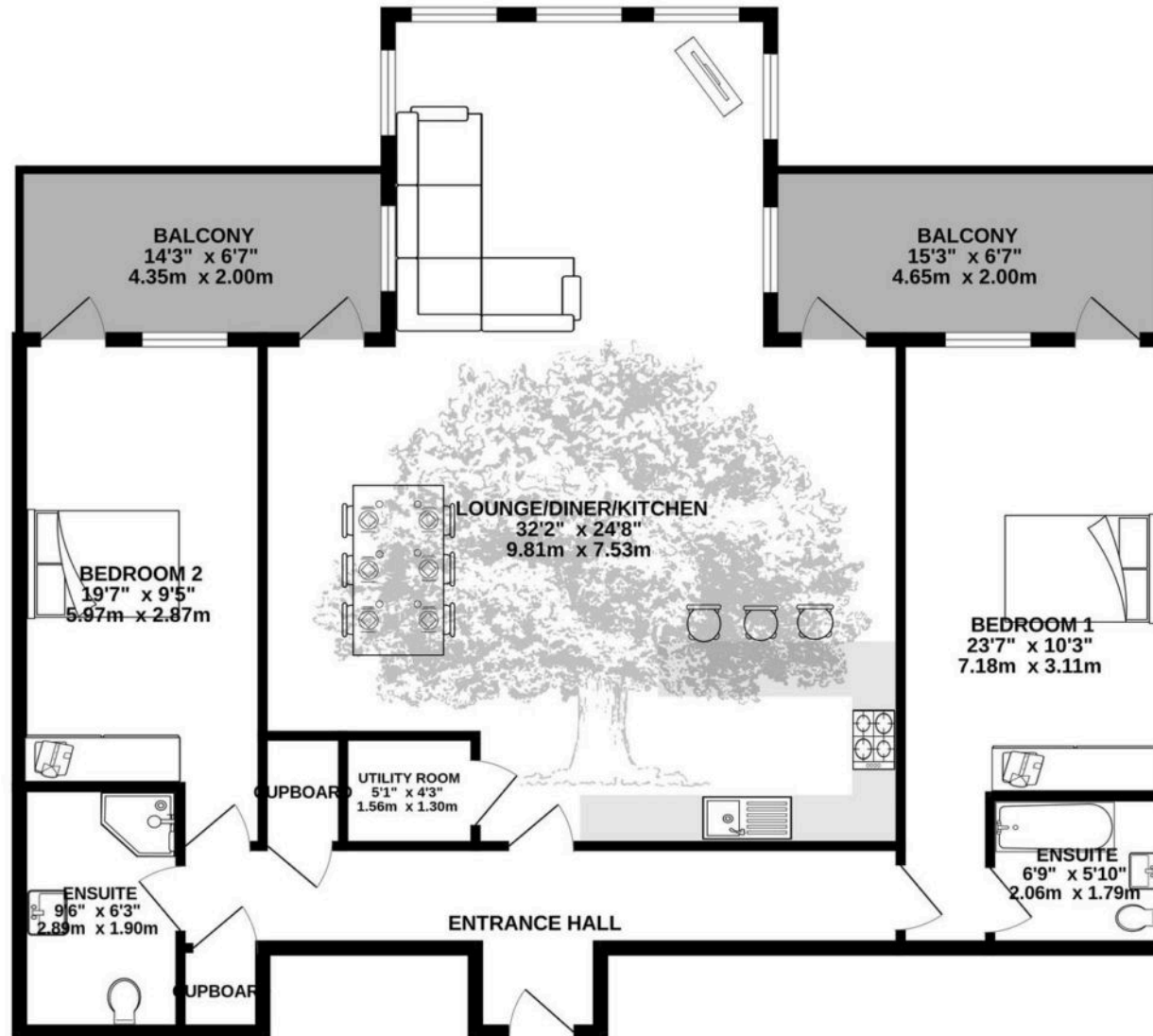
Parking

2 parking spaces. One Garage and one designated. Ample visitor parking.





GROUND FLOOR
1276 sq.ft. (118.6 sq.m.) approx.



TOTAL FLOOR AREA : 1276 sq.ft. (118.6 sq.m.) approx.

Whilst every attempt has been made to ensure the accuracy of the floorplan contained here, measurements of doors, windows, rooms and any other items are approximate and no responsibility is taken for any error, omission or mis-statement. This plan is for illustrative purposes only and should be used as such by any prospective purchaser. The services, systems and appliances shown have not been tested and no guarantee as to their operability or efficiency can be given.
Made with Metropix ©2025



Broadlands

Broadlands Estates, Library Place - JE2 3NL

01534 880770 • enquiries@broadlandsjersey.com • www.broadlandsjersey.com/

BROADLANDS

FINDING YOU A HOME SINCE 1972