



Handois Lodge, La Rue Ville Es Gazeaux, St. Lawrence
£875,000

BROADLANDS
FINDING YOU A HOME SINCE 1972

Handois Lodge, La Rue Ville Es Gazeaux

St. Lawrence, Jersey

- Detached property in a peaceful countryside setting
- Currently arranged as two self-contained two-bedroom apartments, both with their own outside space
- In need of modernisation, offering fantastic scope to add value
- Excellent potential to renovate the existing apartments or reconfigure into one spacious home
- Generous garden space and ample parking
- Idyllic location on a quiet, country lane - raised up with plenty of sun
- Sole agent
- Contact Angela 07829 900010 / angela@broadlandsjersey.com or Joanna 07797 887751 / joanna@broadlandsjersey.com



Handois Lodge, La Rue Ville Es Gazeaux

St. Lawrence, Jersey

Nestled on a quiet country lane, this detached property presents a rare opportunity for those looking to create a bespoke home in a truly peaceful location. Currently arranged as two self-contained two-bedroom apartments, the property offers flexibility and huge potential — whether you're looking to reconfigure into one large family home or refurbish the existing layout. Set on a generous plot with ample parking and garden space, this is an ideal project for a buyer with vision, offering scope to add significant value in a beautiful rural setting.





Living

Each apartment currently includes its own kitchen, living area, and separate entrance, offering a great layout for multi-generational living, investment, or reconfiguration. Subject to the relevant permissions, the space could easily be redesigned to form one spacious and versatile home tailored to your needs.

Sleeping

Across both apartments are four bedrooms in total – two in each unit – offering good proportions and natural light.

Outside

The property sits on a generous plot with ample parking and garden space.

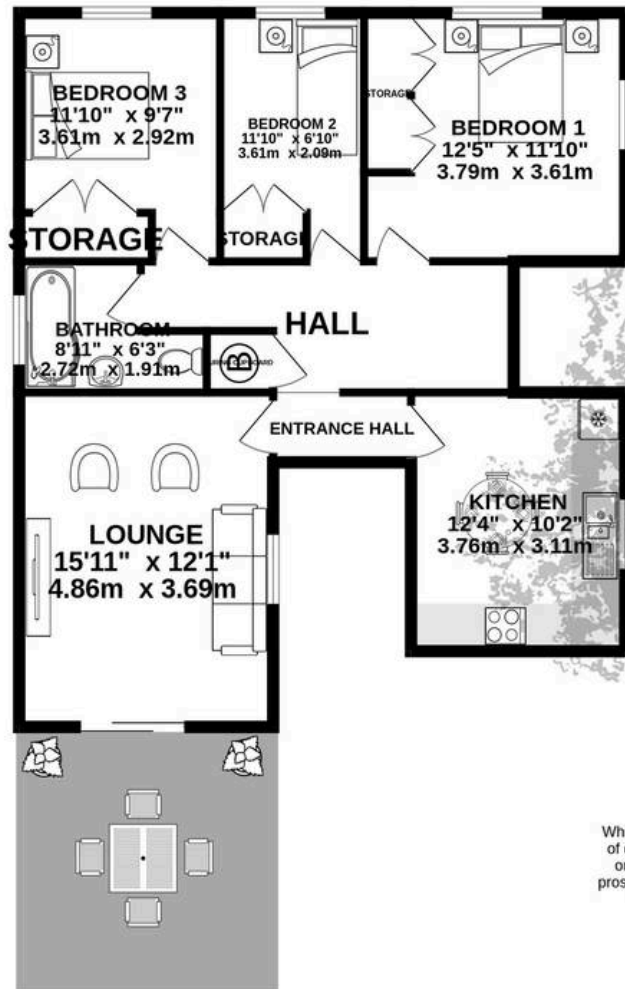
Services

Each apartment has its own oil tank. Fully double glazed.

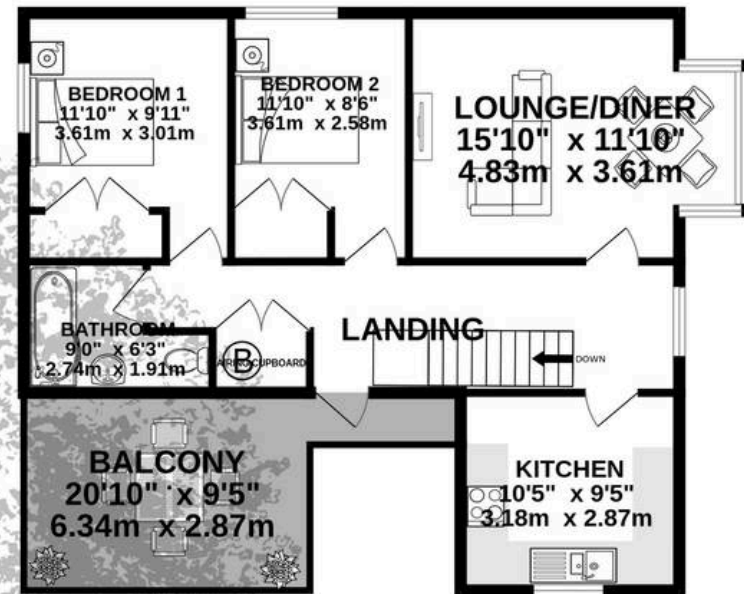




GROUND FLOOR
830 sq.ft. (77.1 sq.m.) approx.



1ST FLOOR
684 sq.ft. (63.5 sq.m.) approx.



TOTAL FLOOR AREA : 1514 sq.ft. (140.6 sq.m.) approx.

Whilst every attempt has been made to ensure the accuracy of the floorplan contained here, measurements of doors, windows, rooms and any other items are approximate and no responsibility is taken for any error, omission or mis-statement. This plan is for illustrative purposes only and should be used as such by any prospective purchaser. The services, systems and appliances shown have not been tested and no guarantee as to their operability or efficiency can be given.

Made with Metropix ©2025



Broadlands

Broadlands Estates, Library Place - JE2 3NL

01534 880770 • enquiries@broadlandsjersey.com • www.broadlandsjersey.com/

BROADLANDS

FINDING YOU A HOME SINCE 1972