



Little Ridge, Coxs Green

Wroughton, Bristol

A charming 3/4 bedroom detached period cottage with pretty gardens and parking, set in a sought-after village location with easy access to Bristol and beyond.

Council Tax band: D

Tenure: Freehold

EPC Energy Efficiency Rating: C

All mains services

- Charming detached period cottage
- Approx 1,672 sq ft of flexible and well presented accommodation
- Lovely edge of village position in the desirable village of Wroughton
- Spacious sitting room, plus snug, office/bedroom four and conservatory
- Wroughton Primary School and Churchill Academy & 6th form catchment
- Pretty garden with established fruit trees and stone outbuilding
- Planning for a two storey side extension visit North Somerset Planning and use Ref. No: 22/P/2607/FUH
- Off street parking
- Owned Solar Panels
- Easy access to Bristol Airport, M5 and mainline railway services (London from 112 mins)







Little Ridge, Coxs Green

Wrington, Bristol

Occupying a lovely spot on the eastern edge of Wrington, *Little Ridge* is a beautifully presented period home with parts dating back to the 1700s. Blending history with flexible living space, the property offers adaptable accommodation, appealing gardens, and the bonus of a useful stone outbuilding.

Set behind an attractive stone wall and framed by a wisteria-clad façade, the cottage is approached via a gated path from the parking area to the rear.

Inside, the accommodation is full of character: the main sitting/dining room, part of the original two-up, two-down cottage, features sash windows with deep sills, a recessed fireplace with wood-burning stove, and exposed period details.

A central snug links to a bright conservatory with ceramic floor via sliding doors. Seamlessly blending inside and outside it has doors to the garden where there is an attractive terraced area - perfect for a summer BBQ or alfresco dining.

A stylish dual-aspect kitchen/breakfast room is fitted with a range of units, chic tiled splashback and has an integrated eye level oven, gas hob, and space for a fridge freezer and plumbing for appliances.

Completing the ground floor there is a ground floor WC, and a study/playroom which could easily serve as a fourth bedroom.

Upstairs are three generous double bedrooms. The main bedroom enjoys a dual aspect and built-in storage, while the front rooms take in far-reaching views over Wrington Vale. The family bathroom is fitted with a modern white suite, shower over bath, heated towel rail and contemporary tiling.





Little Ridge, Cox's Green

Wrrington, Bristol

Outside

The gardens at Little Ridge are a real highlight – predominantly laid with lawn it has flower-filled borders, established fruit trees, a greenhouse, shed, and raised vegetable beds.

There is also a substantial stone outbuilding with tiled roof provides storage and workshop space, offering excellent potential for future use.

The property benefits from owned solar panels, off-street parking, and current planning permission for a two-storey extension (North Somerset **Ref: 22/P/2607/FUH**) to create a larger kitchen/dining/family room and an additional bedroom.



Little Ridge, Coxs Green

Wrington, Bristol

Location

Wrington is well known for its excellent facilities and amenities including a primary and playschool with secondary schooling available at nearby Churchill, which also has a modern sports complex. There are also private schools in Bristol, Sidcot, Chew Magna and Wraxall. The village is situated approximately 11 miles southwest of Bristol, with easy access to the M5 at Clevedon and St Georges (J20 and J21). Bristol International Airport is within 4 miles and access to a mainline railway station at Yatton is also within 4 miles with journey times to London Paddington from just 112 mins. The surrounding countryside is designated an Area of Outstanding Natural Beauty and provides many opportunities for outdoor pursuits including sailing, riding and walking.

(All distances/times approx.)

Directions

Travelling from the centre of Wrington, turn left into Silver Street. Continue on Silver Street across the hump bridge passing Wrington Sports and Social Club on your left hand side, continue past the turning for Garston Close and the property can be found just a little further along the road on the right.

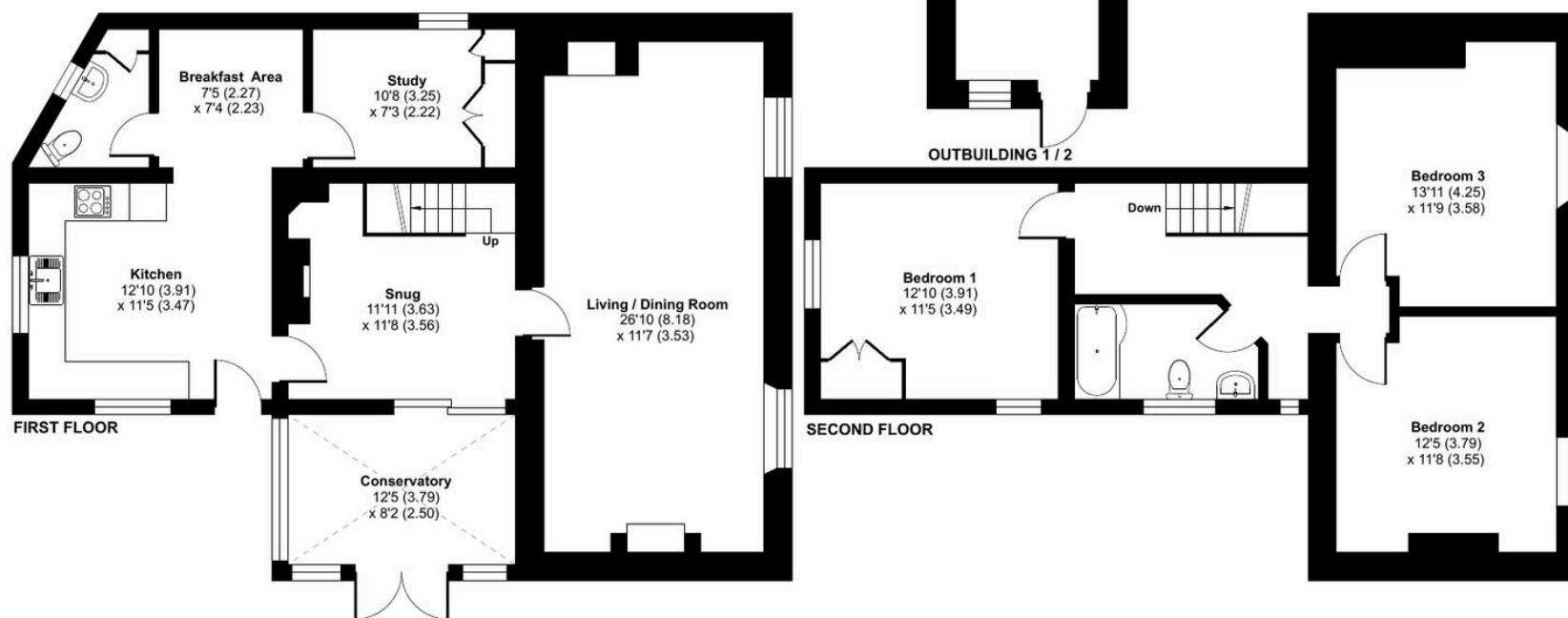


Little Ridge, Coxs Green, Wrington, Bristol, BS40



Approximate Area = 1556 sq ft / 144.5 sq m
Outbuildings = 116 sq ft / 10.7 sq m
Total = 1672 sq ft / 155.2 sq m

For identification only - Not to scale



Floor plan produced in accordance with RICS Property Measurement 2nd Edition, Incorporating International Property Measurement Standards (IPMS2 Residential). © nchecon 2025. Produced for Robin King LLP. REF: 1335420

Robin King

Robin King Estate Agents, 1-2 The Cross Broad Street - BS49 5DG

01934 876226 • post@robin-king.com • www.robin-king.com/

Sales particulars are for guidance only. No structural survey or service testing has been done. These details aren't part of a contract and shouldn't be relied on as facts. References to alterations or use don't confirm regulatory approval. Buyers must verify all information. Measurements are approximate; check them. Contact us with any important concerns before viewing.