



21 Priestsic Road, Sutton-In-Ashfield, NG17 2AE

Guide Price **£290,000**

DavidJames
the estate agent



21 Priestsic Road

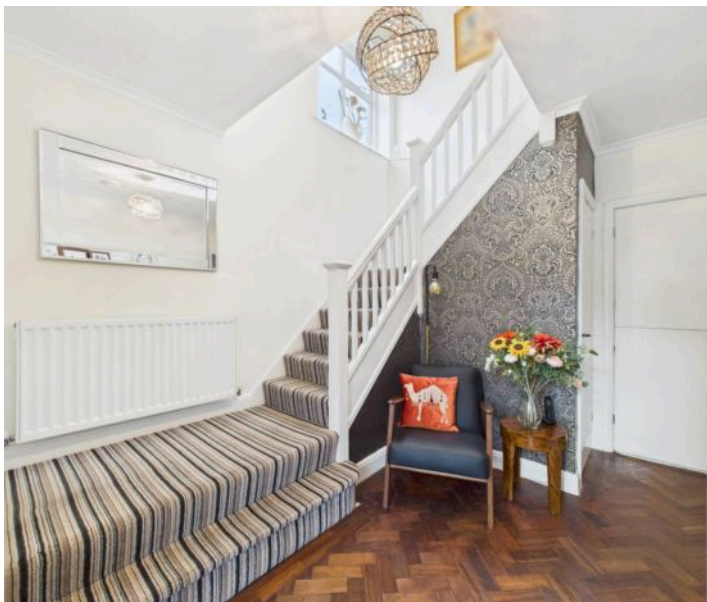
Sutton-In-Ashfield, Sutton-In-Ashfield

Council Tax band: C

Tenure: Freehold

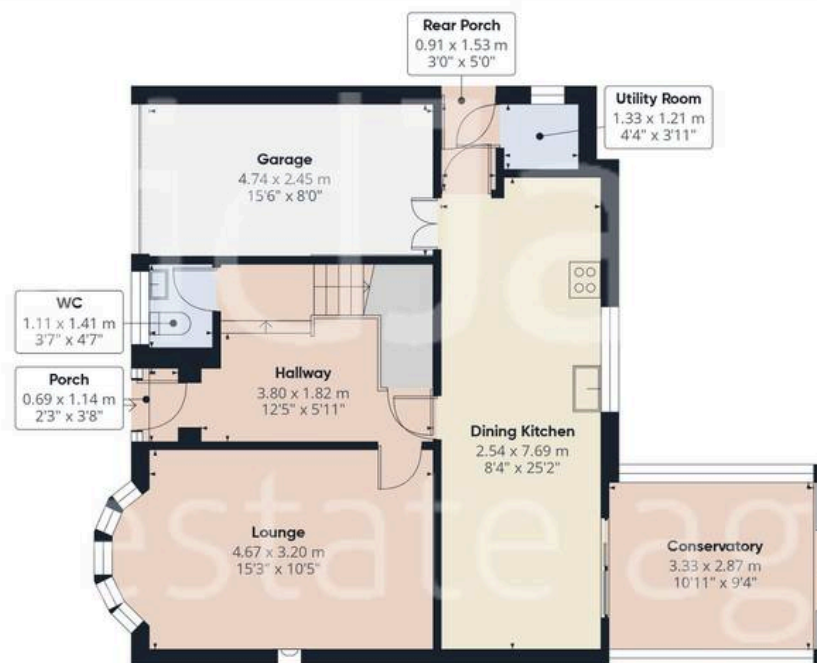
EPC Energy Efficiency Rating: D

- Well presented and well proportioned detached family home
- On the doorstep of Sutton's amenities, three double bedrooms
- Entrance porch with composite entrance door, hallway with original parquet flooring, Wc with washbasin
- Lounge with bow window and fireplace with feature electric fire
- Stylish dining kitchen with slate finish units and integrated appliances
- Rear porch with adjoining utility room
- UPVC double glazed conservatory with laminate flooring, clear glazed roof and double sliding doors to the rear garden
- Bathroom/Wc with white suite and separate shower cubicle with mains pressure shower
- Gas central heating with condensing boiler, UPVC double glazing
- Attractive lawned rear garden with paved patio area, lawned area, summerhouse and additional vegetable patch
- Gated pressed concrete and gravelled driveway provides off road parking for four cars, garage with electric roller door and EV charging point









Floor 0

Approximate total area⁽¹⁾

115.8 m²

1247 ft²



Floor 1

(1) Excluding balconies and terraces

Calculations reference the RICS IPMS 3C standard. Measurements are approximate and not to scale. This floor plan is intended for illustration only.

GIRAFFE360



David James Estate Agents

43 Forest Street, Sutton-in-Ashfield - NG17 1DA

01623 554084 • sutton@david-james.com • www.david-james.com