

Codrington Mews

Notting Hill, W11

£3,500,000



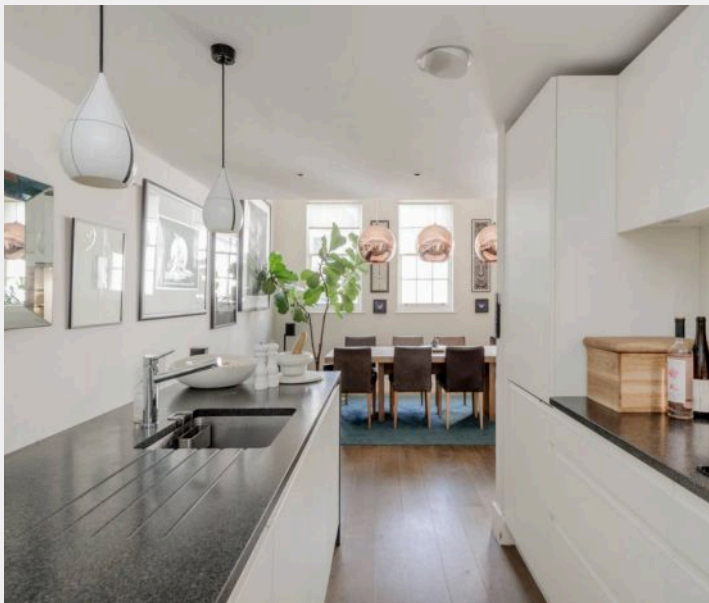


Codrington Mews

Notting Hill, W11

A bright beautifully remodelled and extended four bedroom mews house in the heart of W11, moments from Portobello Road and Westbourne Grove. The wide open plan first floor living, dining and kitchen has numerous windows to both the front and rear aspects and 4+ meter ceiling heights (rare attributes in mews houses). Above the entire top floor is the master bedroom suite with walk-in wardrobe and free standing bath. Additionally there are three further bedrooms, one with en suite and a further bathroom. The basement offers fun entertainment and relaxation with a family/cinema room, spa area with steam room and utility/laundry room.

Codrington Mews is very pretty and quiet. It is a fantastic place to live being moments from Portobello Road, Westbourne Grove and all the most in demand attractions with numerous popular cafes and restaurants.



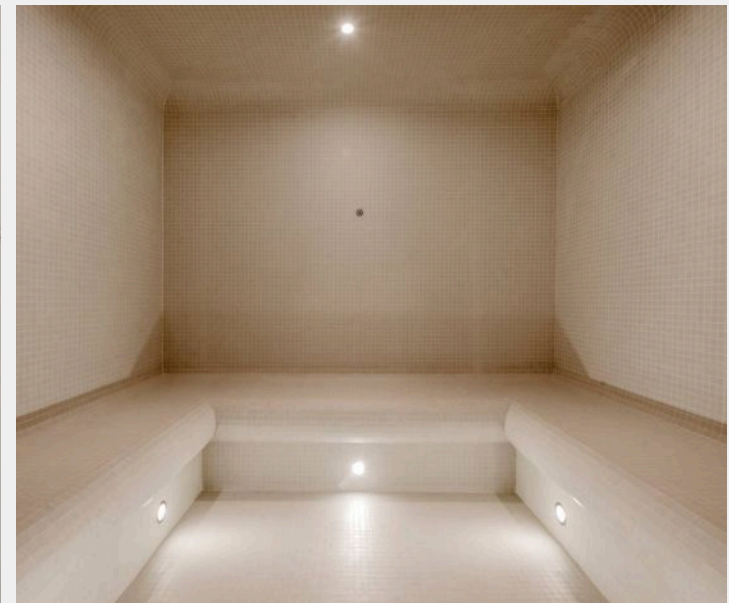
Codrington Mews

Notting Hill

Council Tax band: H

Tenure: Freehold

- Quiet mews location in the heart of W11
- Moments from Portobello Road and Westbourne Grove
- Rebuilt and remodelled house with basement extension
- Cinema room and spa with steam room
- Bright open living space
- Four bedrooms (two with en suites)



Codrington Mews

Notting Hill

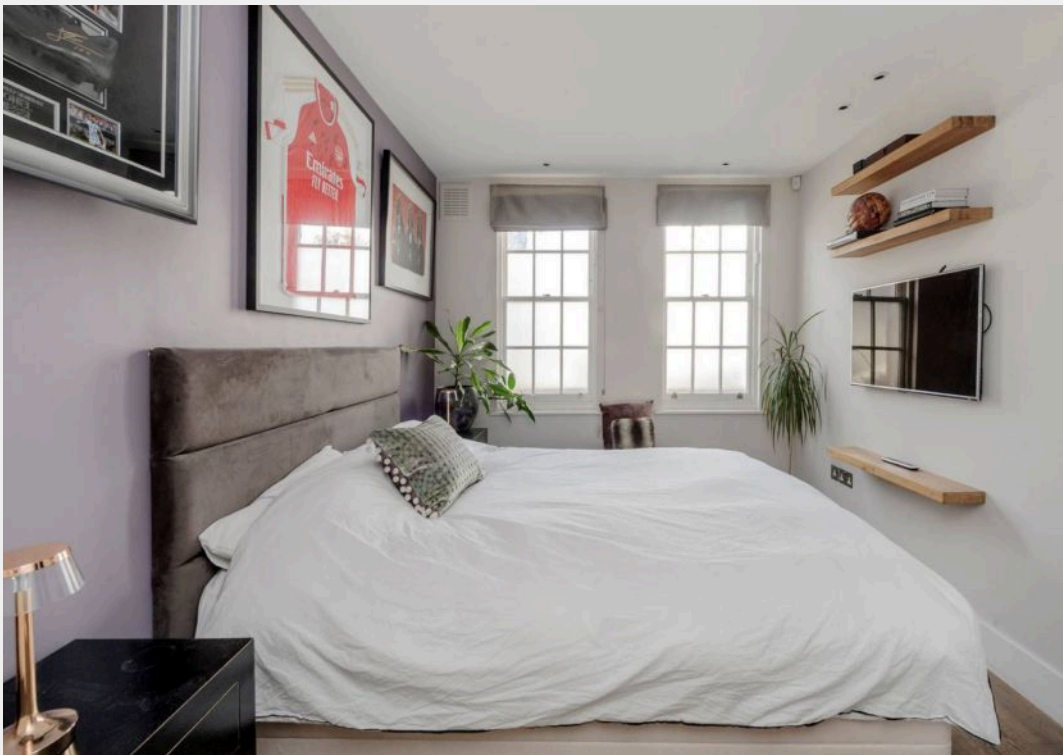
Council Tax band: H

Tenure: Freehold

- Quiet mews location in the heart of W11
- Moments from Portobello Road and Westbourne Grove
- Rebuilt and remodelled house with basement extension
- Cinema room and spa with steam room
- Bright open living space
- Four bedrooms (two with en suites)



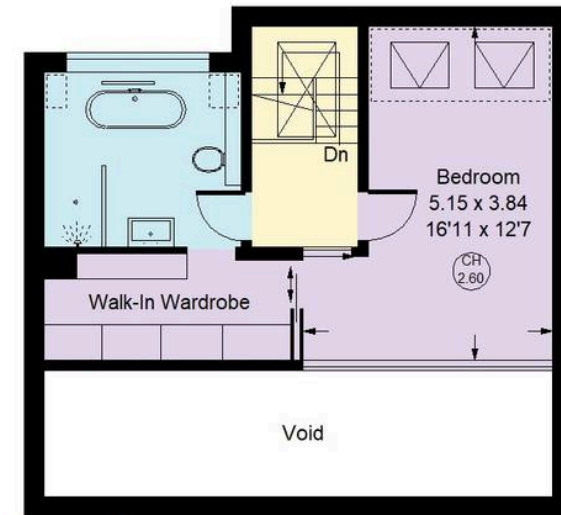




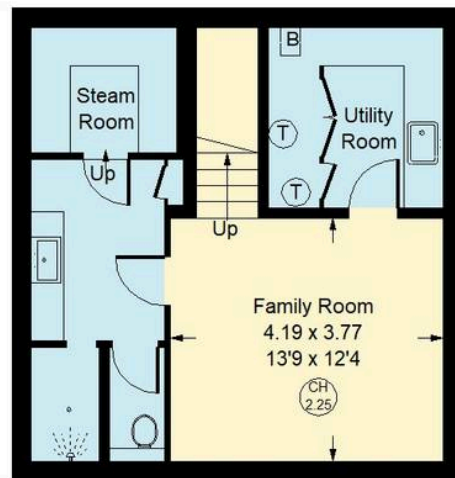


Codrington Mews, W11

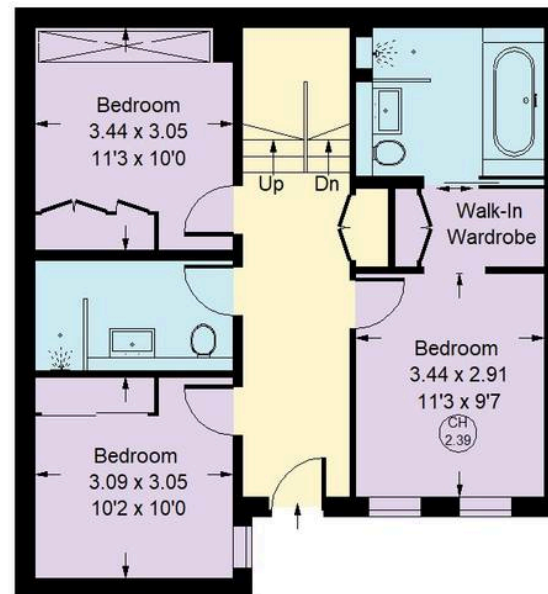
Approx. Gross Internal Area = 199.8 sq m / 2150 sq ft
(Excluding Void)



Second Floor



Lower Ground Floor



Ground Floor



First Floor

⬜ = Reduced headroom
below 1.5 m / 5'0

Whilst every attempt has been made to ensure the accuracy of the floor plan, measurements are approximate and not to scale.
No guarantee is given on the total square footage of the property quoted on the plan. Figures given are for guidance.
Plan is for illustration purposes only, not to be used for valuations.



Rigby & Marchant

115 Westbourne Studios 242 Acklam Road, London - W10 5JJ

020 7221 7210

sales@rigbyandmarchant.co.uk

www.rigbyandmarchant.co.uk/

