



**Stroud Green Road, N4 3FP**  
**£2,500 pcm**

**DAVID  
ANDREW**

your  
most  
valuable  
asset

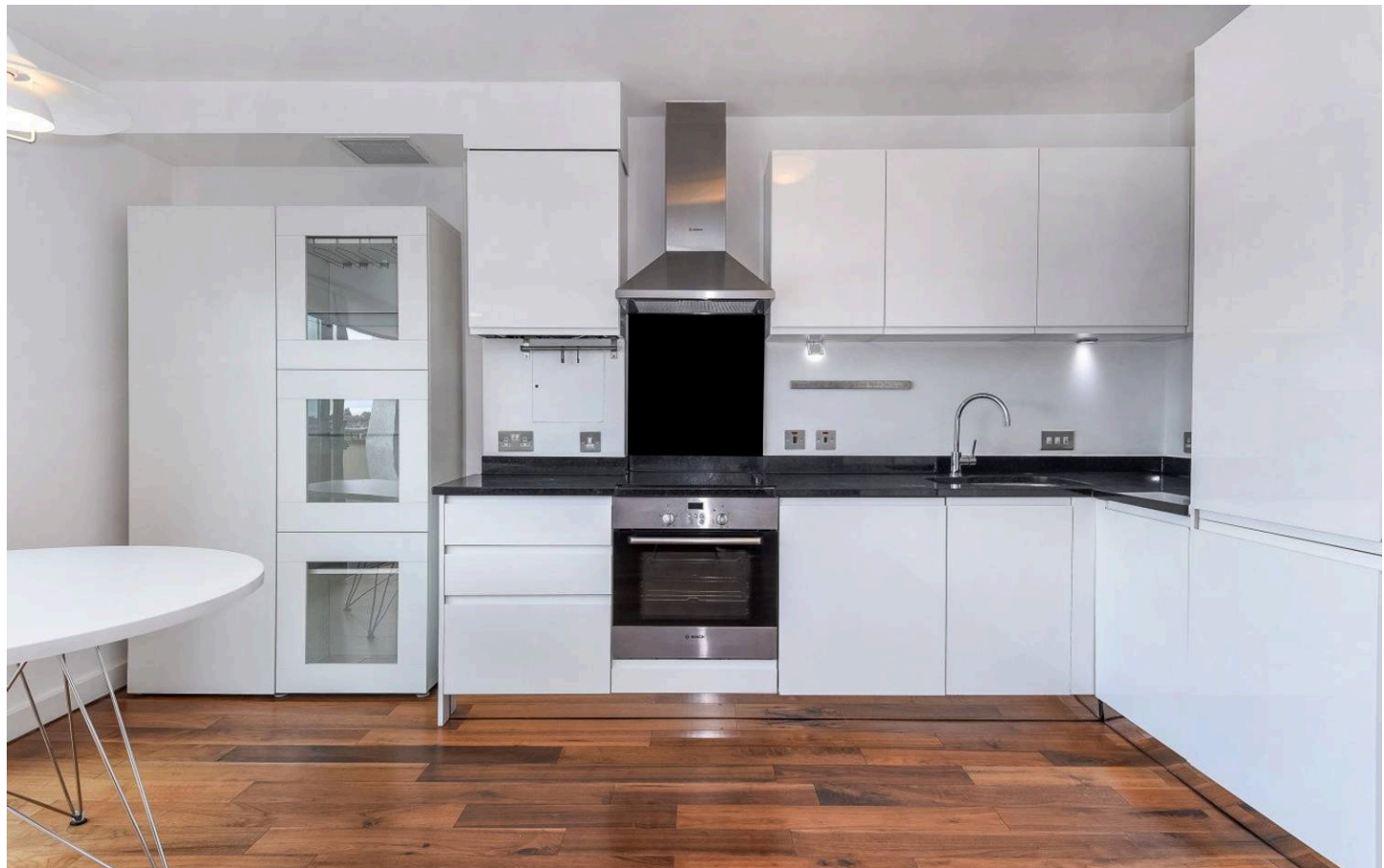
Presenting a spacious two-bedroom apartment with a private balcony, ideally located in the sought-after Finsbury Park area, just moments from the station.

Situated on the fourth floor (with lift access), this contemporary home offers two generously sized bedrooms, with the principal bedroom further benefiting from a walk-in wardrobe. The stylish open-plan kitchen and reception area features wood flooring, a high-gloss fitted kitchen with integrated appliances, a breakfast bar, and a built-in TV unit. Sliding patio doors lead directly onto a private balcony, while additional features include an air-conditioning system, double glazing, and gas central heating.

The development provides access to a ground floor communal bike storage area and a well-maintained courtyard garden at the rear. A further advantage is its highly convenient location above Sainsbury's and Lidl, and only a three-minute walk to Finsbury Park Station (Victoria & Piccadilly lines and National Rail services). Offered Furnished, this property is available from the 6th of October.

Council Tax band: D / EPC Energy Efficiency Rating: B

- Spacious Two-Bedroom Apartment
- Private Balcony
- Fully Fitted Open Plan Kitchen
- Bright and Modern Interior
- Ample Storage Space
- Comprising 671 sqft / 63.2 sqm
- Close to Local Amenities
- Walking Distance to Finsbury Park Station
- Offered Furnished
- Available 6th of October

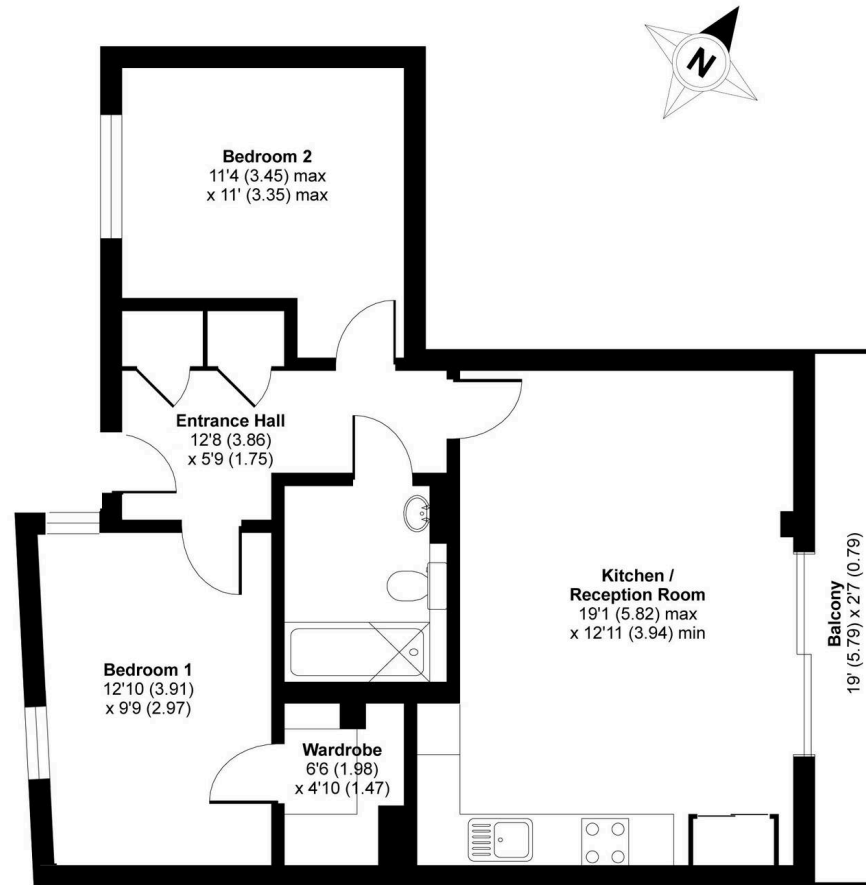




# Stroud Green Road, London, N4

APPROX. GROSS INTERNAL FLOOR AREA 671 SQ FT 62.3 SQ METRES

**DAVID  
ANDREW** | your  
most  
valuable  
asset



FOURTH FLOOR

## Archway Office

671 Holloway Road  
London, N19 5SE

T (0)20 7619 3750

## Highbury Office

90 Highbury Park  
London, N5 2XE

T (0)20 7354 9111

## Finsbury Park Office

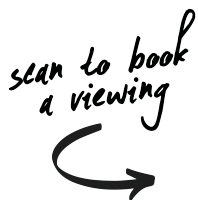
167 Stroud Green Road  
London, N4 3PZ

T (0)20 7281 2000

## Property Management Office

235 Blackstock Road  
London, N5 2LL

T (0)20 7354 9222



Whilst every attempt has been made to ensure the accuracy of the floor plan contained here, measurements of doors, windows and rooms are approximate and no responsibility is taken for any error, omission or misstatement. These plans are for representation purposes only as defined by RICS Code of Measuring Practice and should be used as such by any prospective purchaser. Specifically no guarantee is given on the total square footage of the property if quoted on this plan. Any figure given is for initial guidance only and should not be relied on as a basis of valuation.

Copyright nichecom.co.uk 2017 Produced for David Andrew REF : 199823

**Note:**  
are has been exercised in the  
ion of these particulars,  
its about the property must not be  
upon as representations of  
its or fact. Prospective applicants  
ake and rely upon their own  
; and those of professional  
tatives. David Andrew Estates  
no liability for any error contained  
in these particulars.

