



Tollington Park, N4 3QW
£3,000 pcm

**DAVID
ANDREW** | your
most
valuable
asset

Introducing a spacious two-bedroom apartment with both a private and communal garden, ideally located just moments from Finsbury Park Station.

Recently refurbished, this 97 sq m / 1,044 sq ft property offers a modern and comfortable living environment. The accommodation comprises a fully fitted contemporary kitchen with dining area, a large separate reception room with stylish wood flooring throughout, and large windows that allow for an abundance of natural light. Two generously sized double bedrooms provide excellent space for relaxation, while ample storage solutions add to the property's practicality with gas central heating. The standout feature of this apartment is its excellent outdoor space. A private garden, complemented by access to a communal garden, offers a peaceful retreat from city life perfect for enjoying the sun, entertaining guests, or simply unwinding in a tranquil setting.

Located in a prime position close to the vibrant cafés, restaurants, and bars of Stroud Green and Finsbury Park, the property also benefits from superb transport links, with Finsbury Park Station (Victoria, Piccadilly & National Rail) only a short walk away. Offered furnished and available immediately, this residence presents an exceptional opportunity to enjoy stylish, well-connected urban living in one of North London's most sought-after neighbourhoods. Council Tax band: D / EPC Energy Efficiency Rating: D

- Two Double Bedroom Apartment
- Private Garden & Communal Garden
- Comprising 97 sqm / 1044 sqft
- Newly Refurbished
- Modern Fully Fitted Kitchen with a Dining Area
- Stylish Wooden Flooring
- Excellent Location
- Moments from Finsbury Park Station
- Offered Furnished
- Available Now



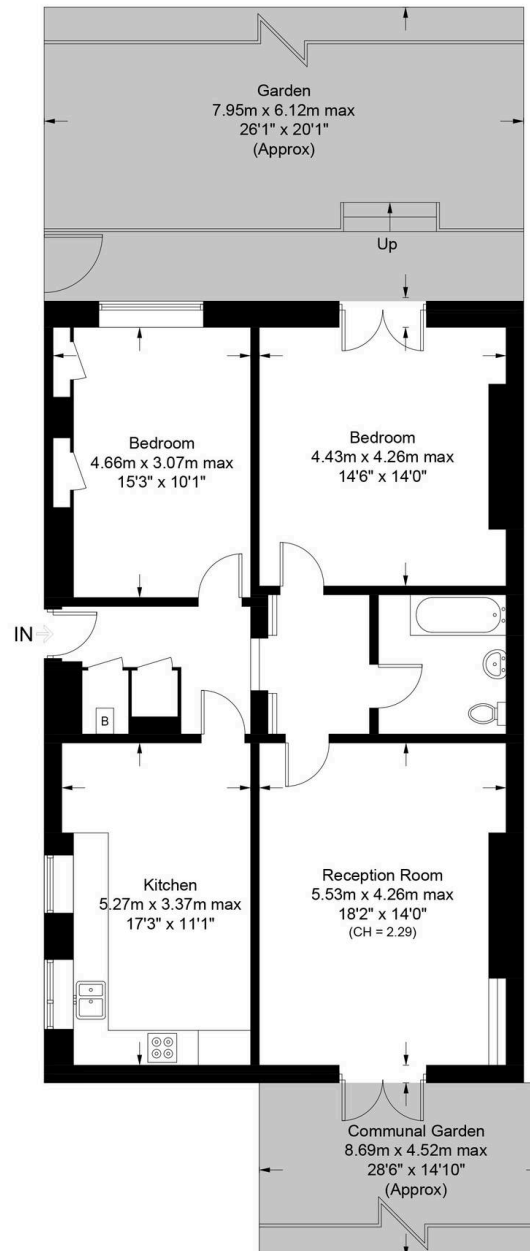




Tollington Park, N4

Approximate Gross Internal Area = 1044 sq ft / 97.0 sq m

DAVID ANDREW | your most valuable asset



Archway Office

671 Holloway Road
London, N19 5SE

T (0)20 7619 3750

Highbury Office

90 Highbury Park
London, N5 2XE

T (0)20 7354 9111

Finsbury Park Office

167 Stroud Green Road
London, N4 3PZ

T (0)20 7281 2000

Property Management Office

235 Blackstock Road
London, N5 2LL

T (0)20 7354 9222

scan to book
a viewing



**Certified
Property
Measurer**

This plan is for layout guidance only. Not drawn to scale unless stated. Windows and door openings are approximate. Whilst every care is taken in the preparation of this plan, please check all dimensions, shapes and compass bearings before making any decisions reliant upon them. (ID1233891)

DAVID ANDREW | your most valuable asset

has been exercised in the
of these particulars,
out the property must not be
as representations of
fact. Prospective applicants
and rely upon their own
d those of professional
s. David Andrew Estates
bility for any error contained
in these particulars.



safeagent