



Dower Cottage L'Anciennete, La Route De Ste Marie, St. Mary
£3,200 pcm

BROADLANDS
FINDING YOU A HOME SINCE 1972

Dower Cottage L'Anciennete, La Route De Ste Marie

St. Mary, Jersey

150m west of St Marys village, pub and church.

- Gorgeous cottage in quaint village location
- Huge premiere bedroom ensuite
- Multiple reception rooms
- Single garage plus parking for 2
- On bus route
- Private walled garden
- Pets negotiable
- Entitled / Licensed
- Available from 1st November
- Sole agent
- Please contact rentals@broadlandsjersey.com



Dower Cottage L'Anciennete, La Route De Ste Marie

St. Mary, Jersey

Exceptionally well appointed 17th century cottage in great condition, available from November 1st.

With a date stone of 1659, this grade listed cottage retains it's character but has stepped into the modern world, available to rent almost completely furnished with all the modern conveniences you would want it is warm, dry, light and utterly charming. In excellent condition and with good head heights throughout you will find an entrance hall, fully fitted designer kitchen, large living room with feature fireplace, WC and garden room. The first floor features a huge double bedroom, a large single/small double and a house bathroom. The premiere bedroom is surprisingly spacious with large fitted double wardrobes and en suite bathroom. Featuring designer planted gardens of lush green foliage, a private walled garden to the west and a patio garden space to the east. Garage, plus parking for 2 make this an easy choice as your next home. Available to qualified / entitled persons, long lease preferred and references essential.





Living

Surprisingly, for a 17th century cottage, all rooms have generous head heights. There is an entrance hall, WC, charming kitchen with bespoke cabinetry, breakfast bar, pantry and windows overlooking courtyard. A charming living room with fireplace bursting with character, and further garden room with snug and dining table. Please note the living room furniture shown in photos is no longer available.

Sleeping

The premiere bedroom has the entire top floor, over 36sqm of space with built in wardrobes, ensuite bathroom, stone details, stained glass windows and additional storage. The second bedroom is large, featuring wardrobe and storage. Please note the two beds shown in photo are no longer available. The 3rd bedroom is a large single, with a desk by the window and the character features that abound in this cottage.

Outside

The gardens were planted by a renowned landscape gardener and feel tropical, lush and green. There is a tranquil courtyard to the east side of the house, with a fish pond and a goldfish called Moby. To the south side of the house is a walled garden, mainly laid to lawn with mature borders and a shed at the end.

Parking

Single garage plus 2 parking spaces, one in front of garage and one in front of cottage.

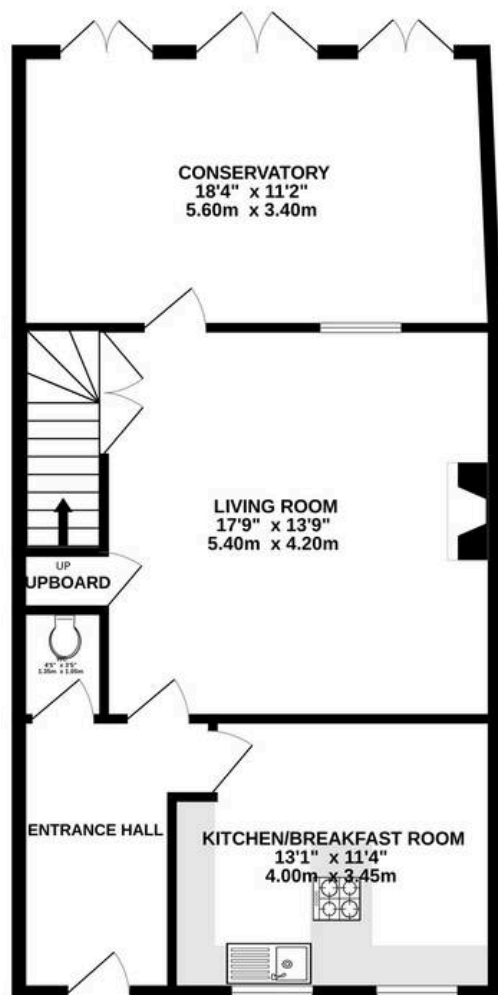
Services

All mains services. Oil fired central heating. Underfloor heating in kitchen and hall. Available part-furnished, full range of appliances including 2 drawer dishwasher, 4 point hob and combination oven microwave and televisions on the wall in kitchen, living and premiere bedroom. Just move straight in! Pets by negotiation. Minimum 2 year lease preferable.

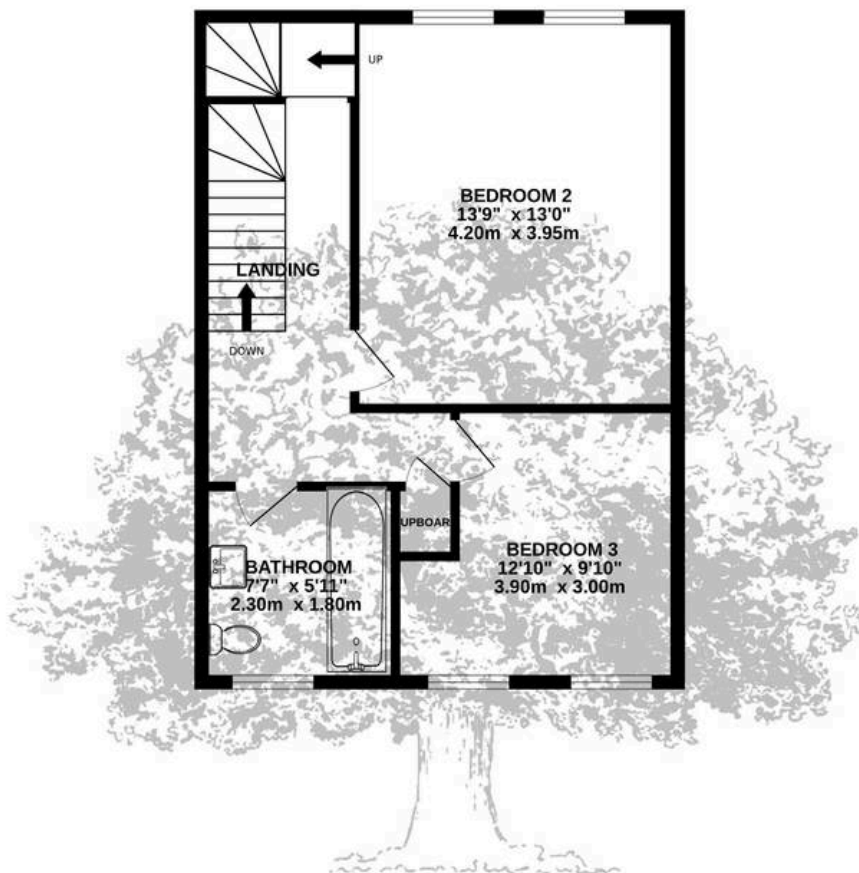




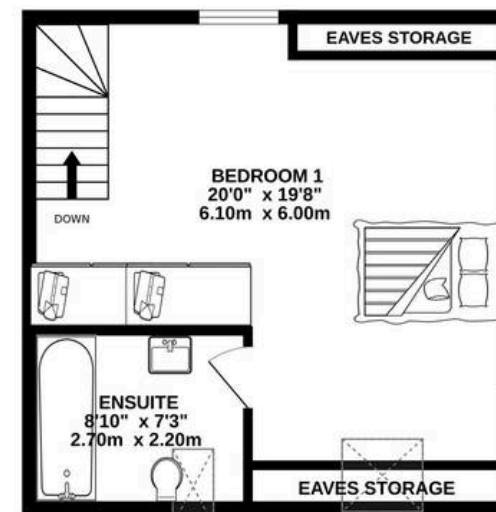
GROUND FLOOR
732 sq.ft. (68.0 sq.m.) approx.



1ST FLOOR
524 sq.ft. (48.7 sq.m.) approx.



2ND FLOOR
387 sq.ft. (36.0 sq.m.) approx.



TOTAL FLOOR AREA : 1644 sq.ft. (152.7 sq.m.) approx.

Whilst every attempt has been made to ensure the accuracy of the floorplan contained here, measurements of doors, windows, rooms and any other items are approximate and no responsibility is taken for any error, omission or mis-statement. This plan is for illustrative purposes only and should be used as such by any prospective purchaser. The services, systems and appliances shown have not been tested and no guarantee as to their operability or efficiency can be given.

Made with Metropix ©2023



Broadlands

Broadlands Estates, Library Place - JE2 3NL

01534 880770 • enquiries@broadlandsjersey.com • www.broadlandsjersey.com/

BROADLANDS

FINDING YOU A HOME SINCE 1972