



115 Vale Road, Portslade BN41 1GE

£2,200 pcm

**MANSELL
McTAGGART**
Trusted since 1947

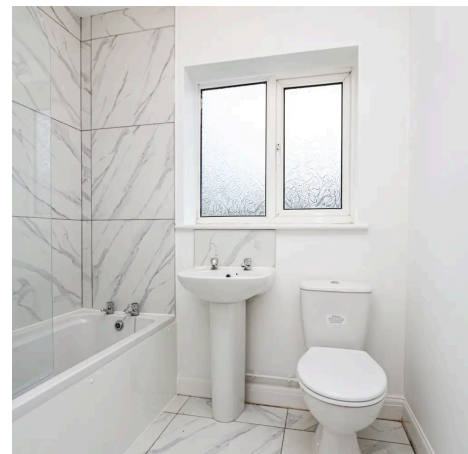
115 Vale Road

Portslade, Brighton

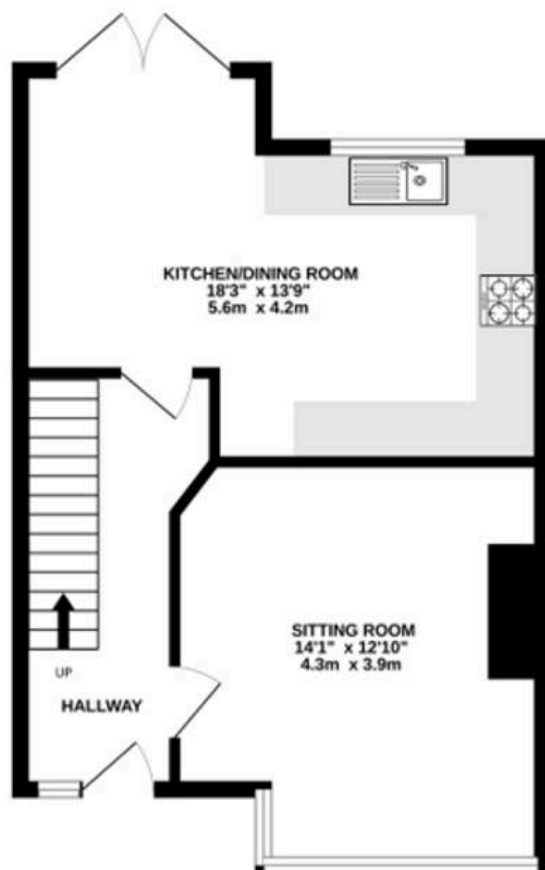
Four bedroom terraced family home

Council Tax band: C

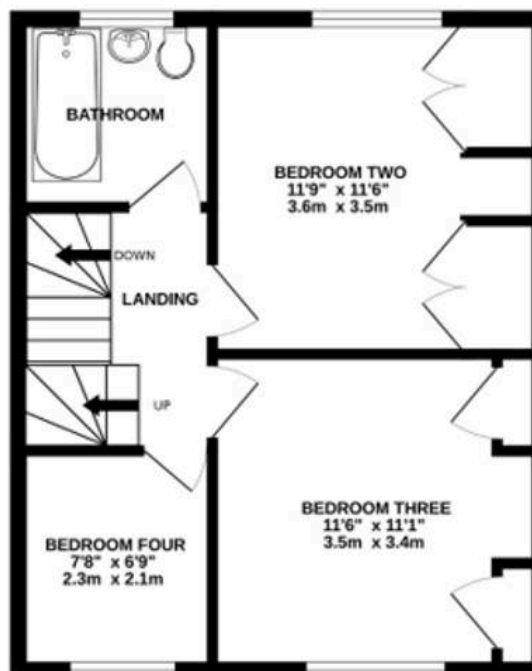
- FOUR BEDROOM TERRACED HOUSE
- RECENTLY REFURBISHED
- LOUNGE
- KITCHEN/DINER
- TWO DOUBLE BEDROOMS & SINGLE BEDROOM ON FIRST FLOOR
- FAMILY BATHROOM
- LARGE DOUBLE BEDROOM TO TOP FLOOR
- GOOD SIZE REAR GARDEN
- CLOSE TO LOCAL SCHOOLS, SHOPS & PUBLIC TRANSPORT



GROUND FLOOR
452 sq.ft. (42.0 sq.m.) approx.



1ST FLOOR
416 sq.ft. (38.7 sq.m.) approx.



2ND FLOOR
324 sq.ft. (30.1 sq.m.) approx.



**MANSELL
McTAGGART**
Trusted since 1947

TOTAL FLOOR AREA : 1192 sq.ft. (110.7 sq.m.) approx.

Whilst every attempt has been made to ensure the accuracy of the floorplan contained here, measurements of doors, windows, rooms and any other items are approximate and no responsibility is taken for any error, omission or mis-statement. This plan is for illustrative purposes only and should be used as such by any prospective purchaser. The services, systems and appliances shown have not been tested and no guarantee as to their operability or efficiency can be given.
Made with Metropix ©2023





Mansell McTaggart Brighton & Hove

Mansell McTaggart, 138 Old London Road - BN1 8YA

01273 508955

patcham@mansellmctaggart.co.uk

www.mansellmctaggart.co.uk/branch/brighton

