



Evenlode Gardens, Moreton-In-Marsh



Located on a tucked away residential street, this immaculate four bedroom, semi-detached dormer bungalow boasts a spacious layout throughout, making it ideal for couples, downsizers or families seeking modern living.

Through the front door, and into the hallway, through the sliding wooden door to the right you are welcomed into the bright and airy living space, which flows round to the open plan dining and kitchen space, with modern fitted units, integrated appliances (including gas hobs, oven, dishwasher, fridge/freezer) and access to the rear garden via the double patio doors. Continuing down the hallway to the left, there is a contemporary bathroom, and two bedrooms at the end, one double with built-in storage and one single. On the first floor, there are two further double bedrooms and a large eaves storage area.

To the front of the house is a driveway with parking for two cars and side access to the garden. At the rear of the property, there is a south facing, generous size garden, all across one level, it is laid predominantly to lawn with a hardstanding seating area. There is an external utility cupboard with plumbing for a washing machine.
EPC: C

Council Tax Band: C

Tenure: Freehold

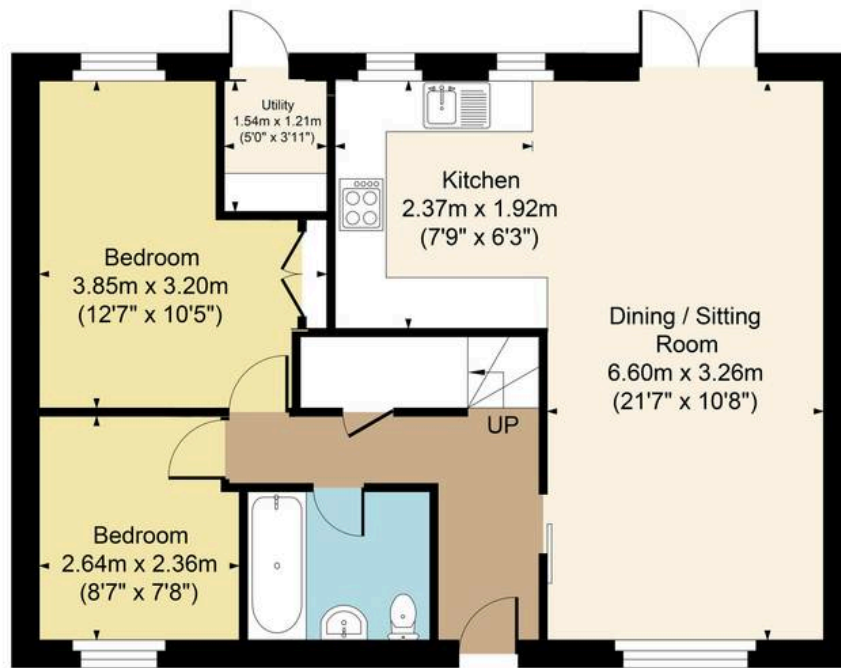
What3Words: ///decency.tulip.extent

Moreton in Marsh has been a prosperous market town for many years - with weekly Tuesday markets and a thriving high street with a wide range of amenities. The town enjoys excellent public transport links including a direct rail link to London Paddington (via Oxford), and amenities. Moreton in Marsh has a local primary school in the town, and is within the catchment area for both Chipping Campden School and The Cotswold School in Bourton on the Water, both secondary schools.

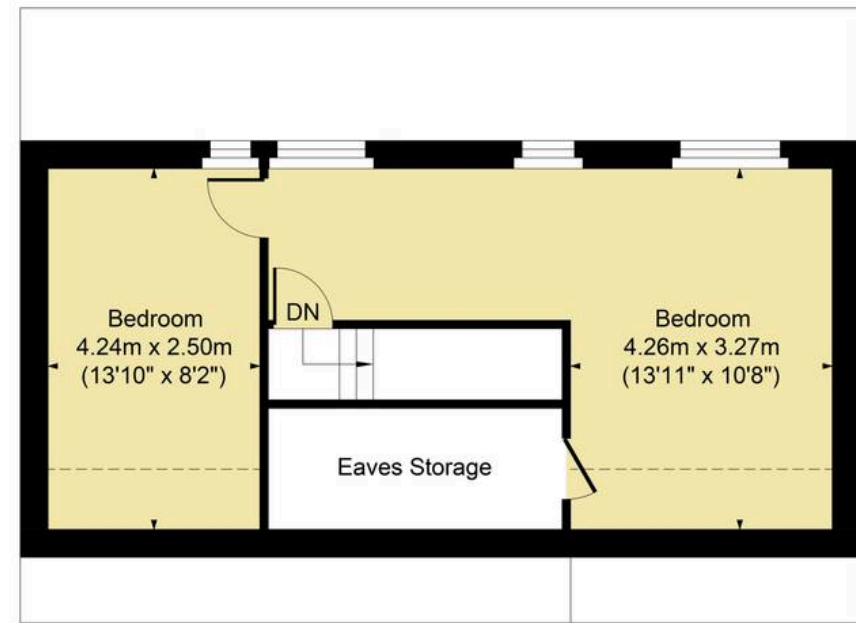




Main House Approx. Gross Internal Area:- 100.56 sq.m. 1082 sq.ft.



Ground Floor



First Floor

FOR ILLUSTRATIVE PURPOSES ONLY-NOT TO SCALE

The position & size of doors, windows, appliances and other features are approximate only.

□ □ □ Denotes restricted head height

www.dmlphotography.co.uk