



Florence Road, N4 4DL
£2,250 pcm

**DAVID
ANDREW** | your
most
valuable
asset

A beautifully presented two-bedroom apartment, set over the first floor of a charming Victorian conversion, ideally located within walking distance of Finsbury Park Station.

Arranged across two levels, the property offers a bright and spacious reception room, a separate fully fitted modern kitchen, and a contemporary bathroom. Two well-proportioned double bedrooms, wood flooring, ample storage, and gas central heating further enhance the appeal of this stylish home.

Situated in the heart of Stroud Green, the property is just 10–15 minutes' walk from Finsbury Park Station (Victoria and Piccadilly lines, National Rail and Thameslink), with a fantastic selection of cafés, restaurants, shops, and local amenities close by. Offered furnished and available from 12th November.

Council Tax band: B

EPC Energy Efficiency Rating: C

- Spacious Two-Bedroom Apartment
- Fully Fitted Separate Kitchen
- Comprising 47 sqm / 504 sqft
- Bright and Modern Interior
- Double Glazed Windows
- Wooden Flooring
- Walking Distance Finsbury Park Station
- Close to Local Amenities
- Available 12th of November
- Offered Furnished





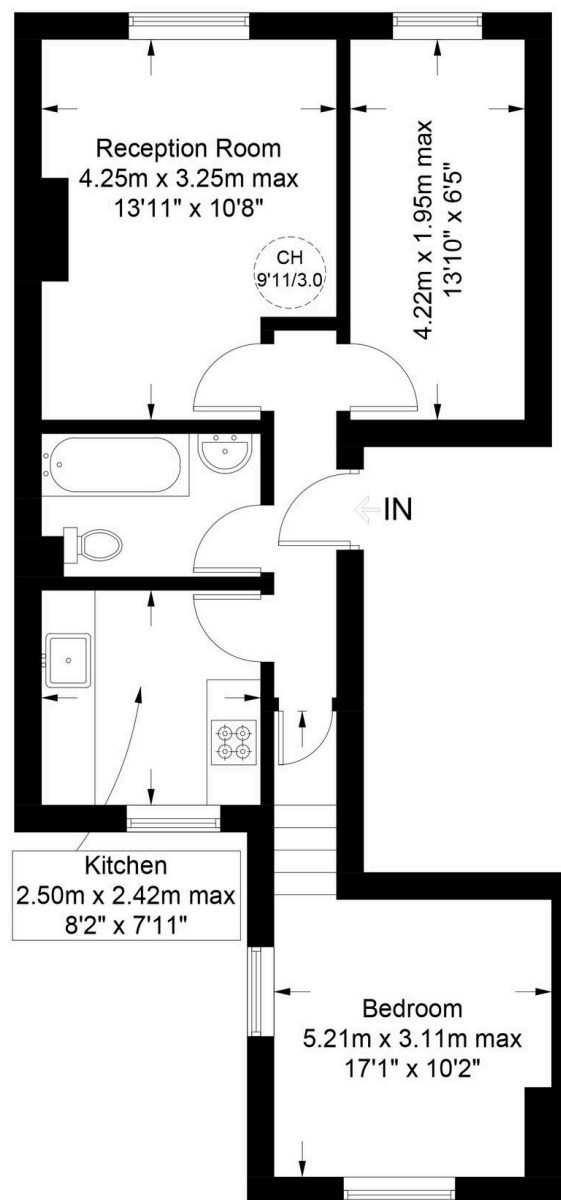


Florence Road, N4

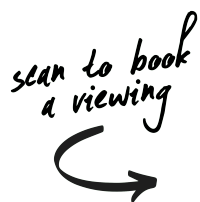
Approximate Gross Internal Area = 512 sq ft / 47.6 sq m

**DAVID
ANDREW**

your
most
valuable
asset



First Floor



**Certified
Property
Measurer**

This plan is for layout guidance only. Not drawn to scale unless stated. Windows and door openings are approximate. Whilst every care is taken in the preparation of this plan, please check all dimensions, shapes and compass bearings before making any decisions reliant upon them. (ID1233762)



has been exercised in the of these particulars, out the property must not be as representations of fact. Prospective applicants and rely upon their own d those of professional s. David Andrew Estates bility for any error contained in these particulars.

Archway Office

671 Holloway Road
London, N19 5SE

T (0)20 7619 3750

Highbury Office

90 Highbury Park
London, N5 2XE

T (0)20 7354 9111

Finsbury Park Office

167 Stroud Green Road
London, N4 3PZ

T (0)20 7281 2000

Property Management Office

235 Blackstock Road
London, N5 2LL

T (0)20 7354 9222

