



**Wellers Grove, EN7 6HU**  
**£2,000 pcm**

**DAVID  
ANDREW** | your  
most  
valuable  
asset



Spacious three-bedroom house, boasting a bright interior and measuring 83 sq m / 893 sq ft. This lovely property features a fully fitted kitchen, complete with wooden flooring and double glazed windows that enhance the natural lighting throughout. The house comes fully furnished, offering a comfortable and inviting living space for its new occupants.

The property comprises three well-proportioned bedrooms, providing ample storage options for occupants. Situated conveniently within walking distance from a bus route, commuting from this location is a breeze. With a private garden, this house offers a tranquil retreat from the hustle and bustle of every-day life.

Located in a sought-after area, this property is surrounded by various amenities such as parks, shops, and restaurants. With its prime location and modern features, this fully furnished three-bedroom house is available for occupancy starting 2nd October.

Council Tax band: D / EPC Energy Efficiency Rating: C

- Spacious Three-Bedroom House
- Private Garden
- Comprising 83 sq m / 893 sq ft
- Fully Fitted Kitchen
- Wooden Flooring
- Bright Interior
- Double Glazed Windows
- Excellent Location
- Offered Furnished
- Available 2nd October





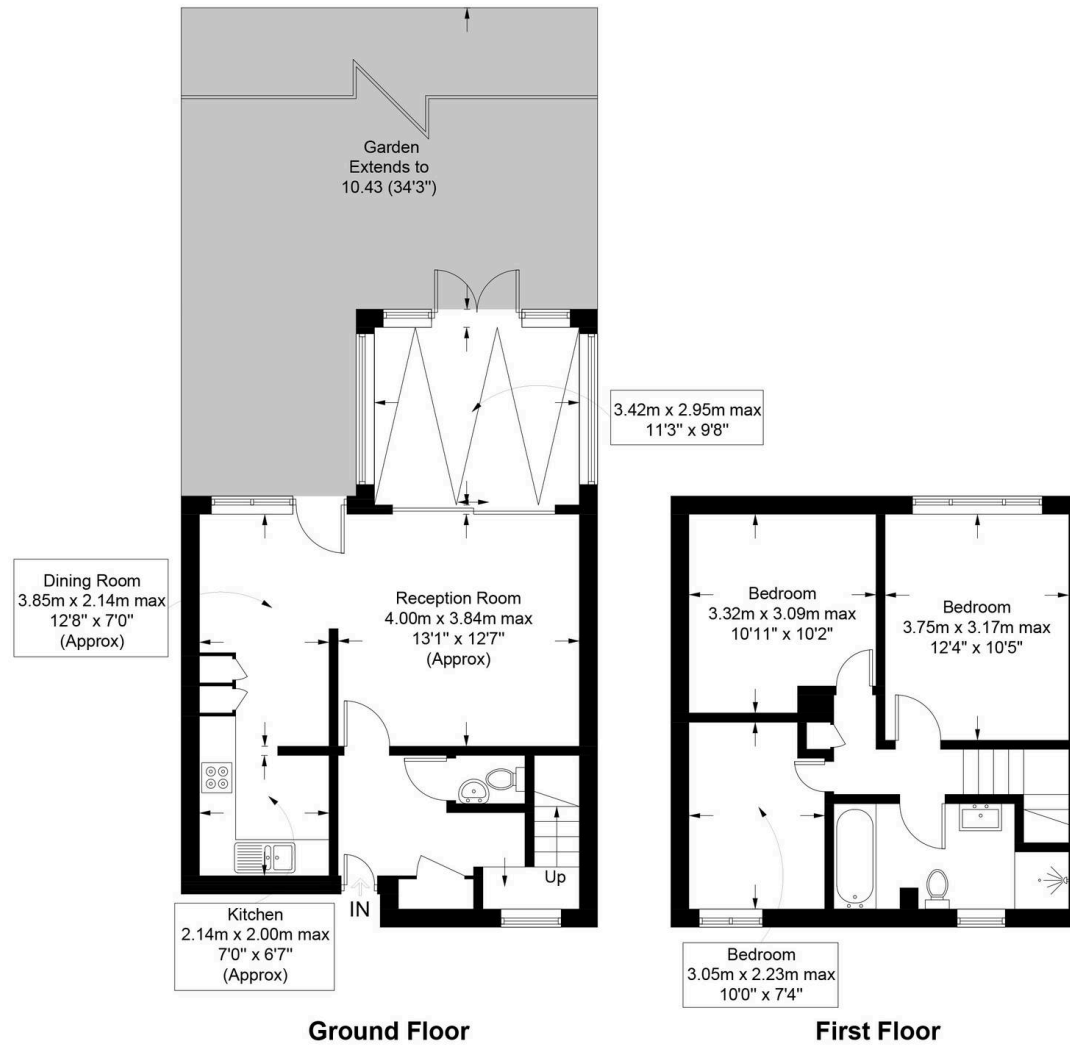




## Wellers Grove, EN7

Approximate Gross Internal Area = 987 sq ft / 91.7 sq m

**DAVID  
ANDREW** | your  
most  
valuable  
asset



### Archway Office

671 Holloway Road  
London, N19 5SE

T (0)20 7619 3750

### Highbury Office

90 Highbury Park  
London, N5 2XE

T (0)20 7354 9111

### Finsbury Park Office

167 Stroud Green Road  
London, N4 3PZ

T (0)20 7281 2000

### Property Management Office

235 Blackstock Road  
London, N5 2LL

T (0)20 7354 9222

scan to book  
a viewing



**Certified  
Property  
Measurer**

This plan is for layout guidance only. Not drawn to scale unless stated. Windows and door openings are approximate. Whilst every care is taken in the preparation of this plan, please check all dimensions, shapes and compass bearings before making any decisions reliant upon them. (ID1234685)

**DAVID  
ANDREW** | your  
most  
valuable  
asset

as been exercised in the  
of these particulars,  
but the property must not be  
as representations of  
fact. Prospective applicants  
and rely upon their own  
those of professional  
s. David Andrew Estates  
liability for any error contained  
in these particulars.



**safeagent**