



## 3 Heatherbell Court, Harthill

Offers Over £110,000







This charming Two Double Bedroom apartment, boasting comfort and convenience offers well proportioned accommodation throughout. Situated as a main door upper flat, it features two generously-sized double bedrooms, both equipped with practical fitted wardrobe storage. The interior of this residence is marked by well-proportioned rooms throughout, highlighted by a stylish white three-piece Bathroom suite and a fitted Kitchen that offers ample storage solutions, capable of accommodating a breakfasting table. The sociable Lounge is a delightful space bathing in an abundance of natural light, perfect for relaxation or entertaining guests. Enjoying a serene location within a well-maintained cul-de-sac, this home also offers an allocated parking bay in close proximity.

Outside, this property offers a delightful blend of convenience and comfort. A small communal area of ground to the front of the property provides a pleasant view. Additionally, residents will appreciate the allocated parking bay, ensuring easy access and peace of mind when it comes to parking. Furthermore, the presence of extra visitor parking bays adds an extra layer of convenience for guests. With its desirable features, this property provides a superb opportunity for those seeking a stylish and well-appointed residence in a peaceful and well-connected setting.



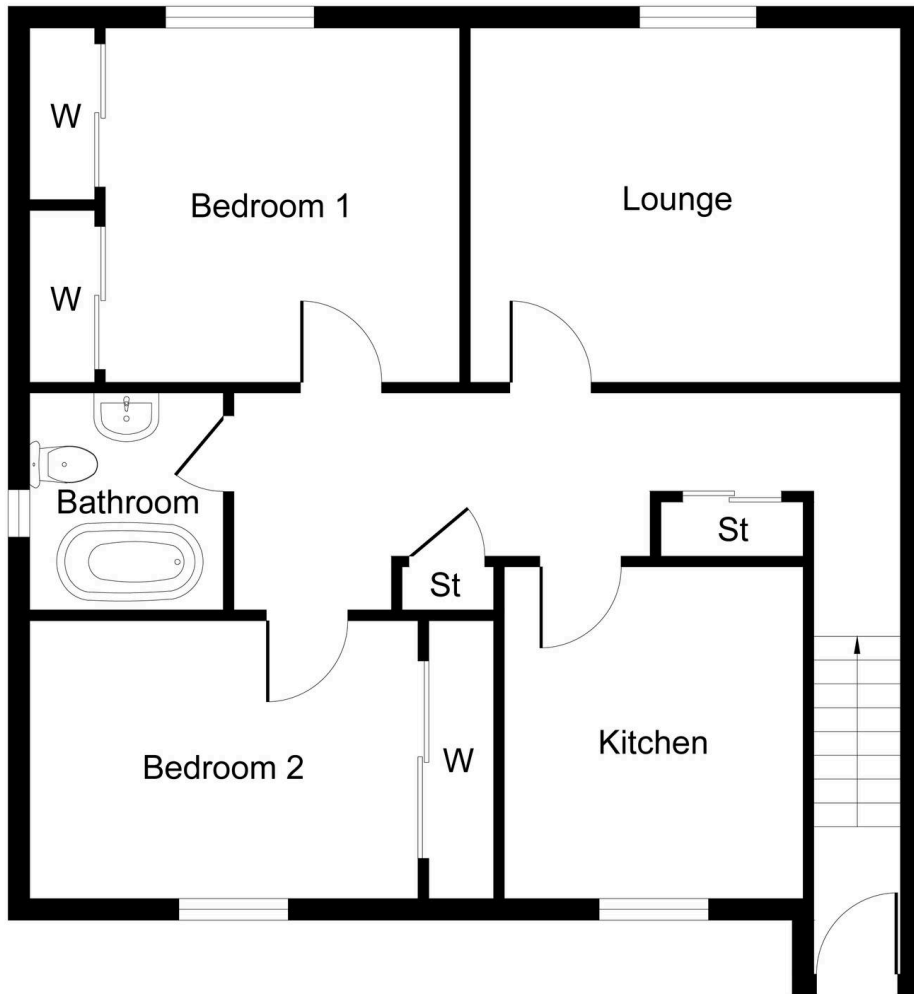
### 3 Heatherbell Court

Harthill, Shotts

- Two Double Bedroom Main Door Upper Flat
- Well proportioned rooms throughout
- Two Double Bedrooms both offer fitted wardrobe storage
- Stylish white three piece bathroom suite
- Fitted Kitchen offers ample storage solutions and can accommodate Breakfasting table
- Located within well maintained cul-de-sac
- Allocated parking bay within close proximity to property
- Sociable Lounge offering abundance of natural light
- Gas Central Heating

Charming Two Double Bedroom apartment with well-proportioned rooms, stylish bathroom, fitted kitchen, sociable lounge, allocated parking. Perfect for those seeking a stylish residence in a peaceful cul-de-sac setting.

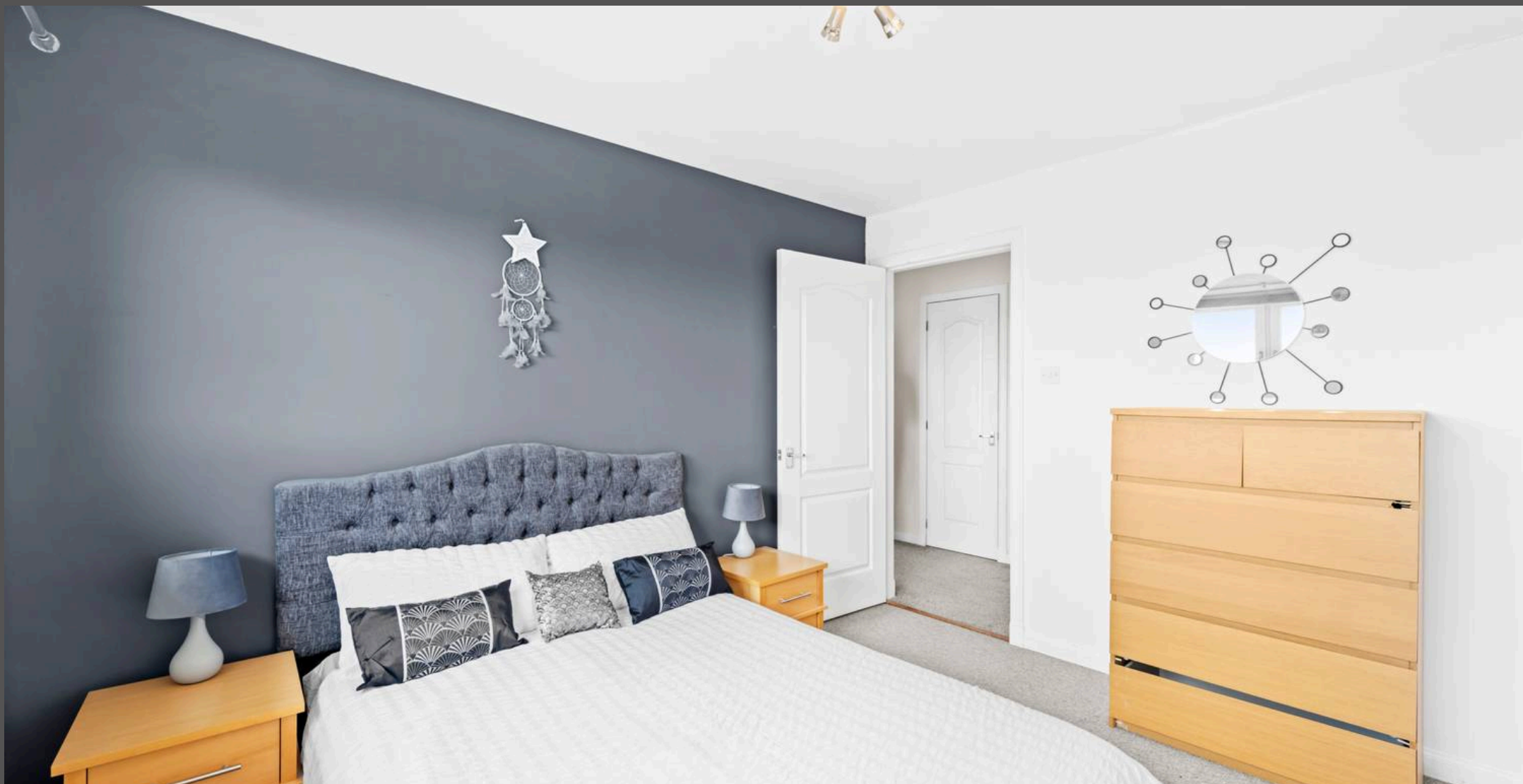




**Approximate Floor Area**  
**704 sq. ft**  
**(65.36 sq. m)**







## KnightBain Estate Agents

Knightbain, 4 Greendykes Road, Broxburn – EH52 5AG

01506 852000

[info@knightbain.co.uk](mailto:info@knightbain.co.uk)

[www.knightbain.co.uk/](http://www.knightbain.co.uk/)

