



## 3 Victoria Cottages, Firgrove Road, Cross In Hand

TN21 0SU

£1,600 pcm

**MANSELL  
McTAGGART**

Trusted since 1947



## 3 Victoria Cottages, Firgrove Road

Cross In Hand, Heathfield

Council Tax band: D

- A beautifully positioned 3 bedroom Victorian cottage
- Enjoying stunning far reaching rural views towards the South Downs
- 90 ft plus southerly facing rear garden
- Store room and adjoining former outside toilet
- Largely open plan living accommodation
- Refitted kitchen and family bathroom
- Walking distance of the high street
- Unfurnished
- Available Early October







## 3 Victoria Cottages, Firgrove Road

Cross In Hand, Heathfield

A beautifully positioned 3 bedroom mid terrace Victorian cottage enjoying stunning far reaching rural views towards the South Downs. A generous 90 ft plus southerly facing rear garden with a drive to the front providing off street parking. Situated off a country lane within walking distance of the high street and local amenities. This impressive period late Victorian home is believed to have been built in 1901 and lies in an enviable position enjoying spectacular rural views. Typical of its era the property benefits from high ceilings and wonderful light and well proportioned rooms. Modern kitchen and family bathroom to a tasteful contemporary style.

The property is entered via a hallway, there is a sitting room with an attractive bay window, feature fireplace and continues through to a dining room/family room with a personal door leading to the rear garden. The kitchen has been beautifully refitted with a matching range of units with a built-in induction hob and space and plumbing for domestic appliances. (white goods can remain if required).

Available: Early October

Unfurnished

EPC rating C

Council tax band D

Services: Gas fired central heating and mains drainage

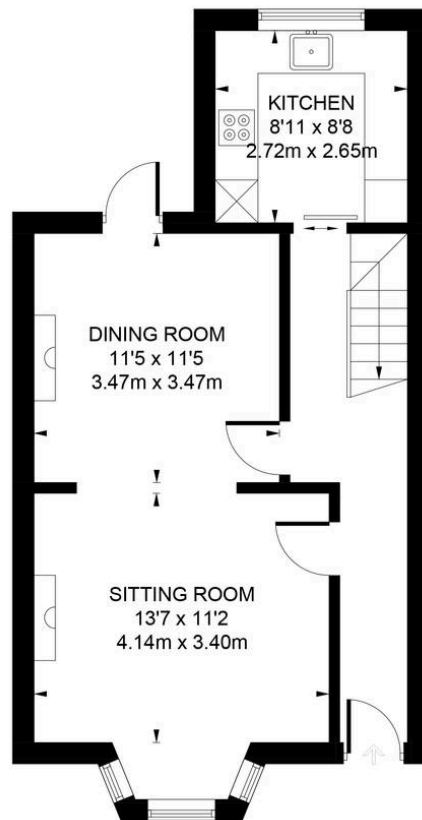


## Victoria Cottages, Firgrove Road, Cross in hand, TN21

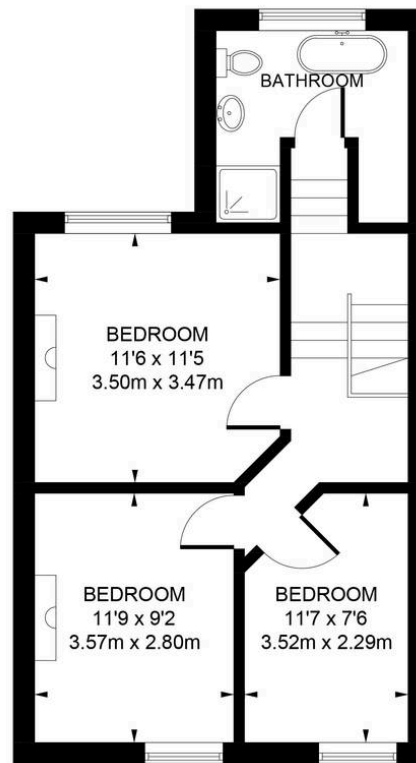
Approximate Gross Internal Area = 989 sq ft / 91.9 sq m

Store = 83 sq ft / 7.7 sq m

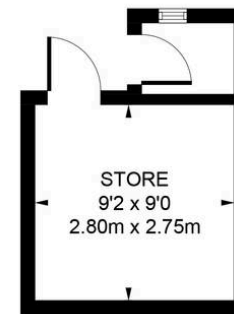
Total = 1072 sq ft / 99.6 sq m



GROUND FLOOR



FIRST FLOOR



(NOT SHOWN IN ACTUAL  
LOCATION / ORIENTATION)

Illustration for identification purposes only, measurements are approximate,  
not to scale. [www.enviromap ltd.co.uk](http://www.enviromap ltd.co.uk) (ID999949)

## Mansell McTaggart Uckfield

Mansell McTaggart, 204-206 High Street - TN22 1RD

01825 760770

[uf@mansellmctaggart.co.uk](mailto:uf@mansellmctaggart.co.uk)

[www.mansellmctaggart.co.uk/branch/uckfield](http://www.mansellmctaggart.co.uk/branch/uckfield)

Consumer Protection from Unfair Trading Regulations 2008 We have not tested any apparatus, equipment, fixtures, fittings or services and so cannot verify that they are in working order or fit for purpose. You are advised to obtain verification from your solicitor or surveyor. References to the tenure of a property are based on information supplied by the seller. We have not had sight of the title documents and a buyer is advised to obtain verification from their solicitor. Items shown in photographs are not included unless specifically mentioned within the sales particulars, but may be available by separate negotiation.