



75 Northwood Avenue, Purley

£500,000 Freehold



habboodle

A Contemporary Three-Bedroom Home with Views over Riddlesdown Common

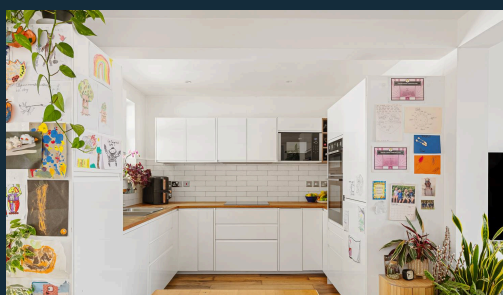
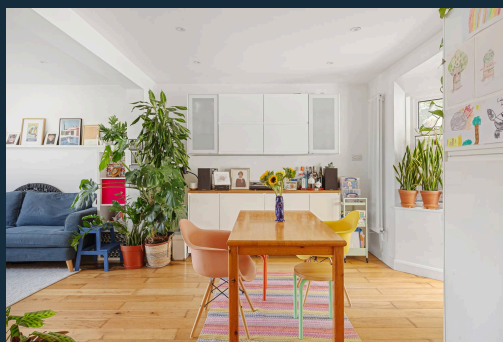
Set on an elevated plot overlooking the greenery of Riddlesdown Common, this beautifully refurbished three-bedroom semi-detached home combines modern open-plan living with direct access to nature and excellent commuter links.

We have an open day booked for Thursday, the 11th of Sep, from 5:00 pm to 6:00 pm, and Saturday, the 13th of September, from 10:30 am to 12:00 pm (please feel free to call us or make any enquiry on any of the platforms, and you will receive a link to book in).

The current owners have thoughtfully redesigned the house to maximise light and space. A wall was removed to create a bright, free-flowing living and dining area, anchored by a sleek contemporary kitchen fitted with high-quality **Neff appliances**. A guest W.C. was added on the ground floor, while a clever reconfiguration upstairs has introduced a (washer/dryer)



- › Elevated Position With Far-Reaching Views Over Riddlesdown Common
- › Private Rear Access Into Foxley Woods
- › Three Well-Proportioned Bedrooms
- › Open-Plan Living/Dining Area With Excellent Natural Light
- › Contemporary Kitchen With High-Quality Neff Appliances
- › Downstairs W.C. And Upstairs Utility Room
- › Landscaped Garden Arranged Over Three Levels, Mainly Level Plot
- › Off-Street Parking And Garage



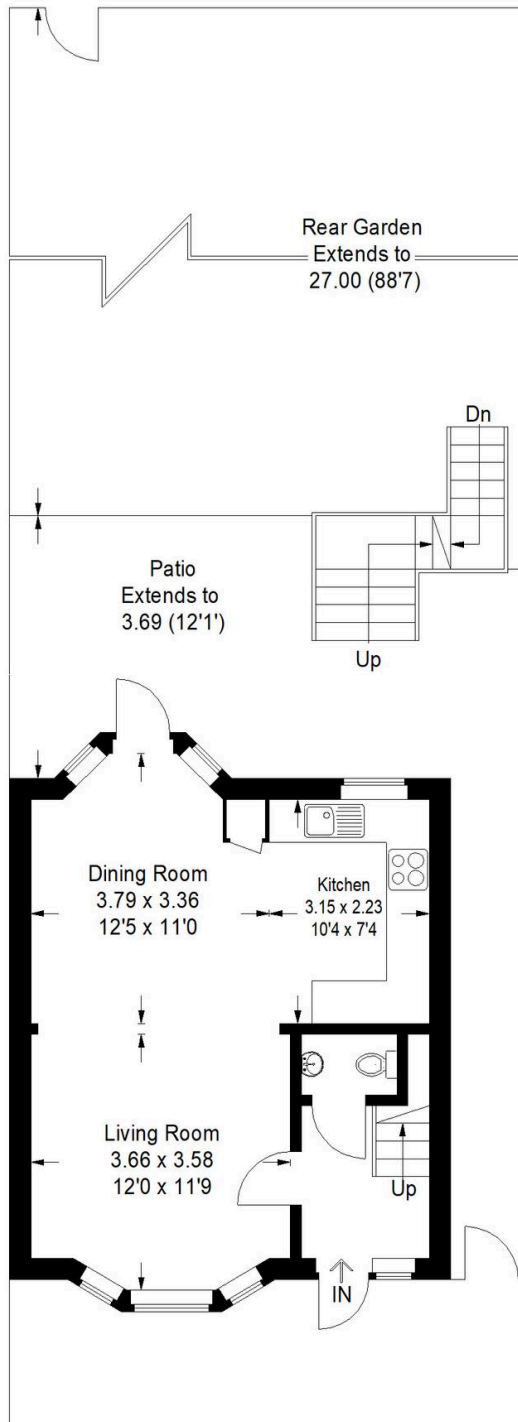
Northwood Avenue, Purley

Approximate Gross Internal Area

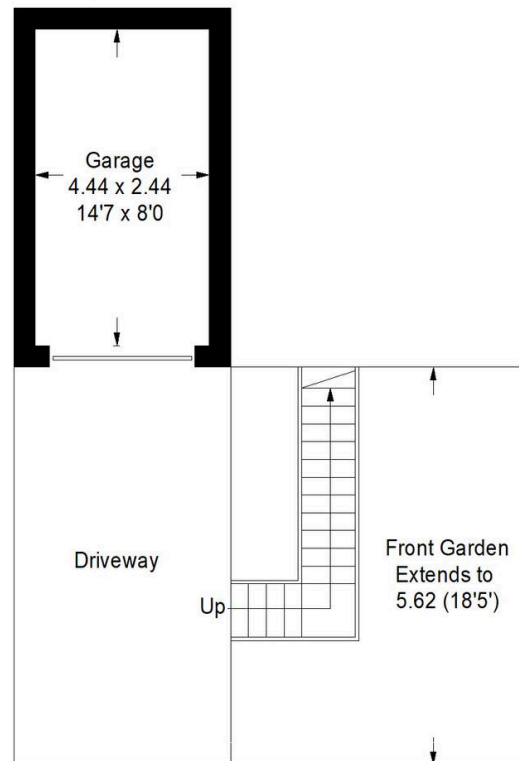
83.1 sq m / 894 sq ft

Garage = 10.9 sq m / 117 sq ft

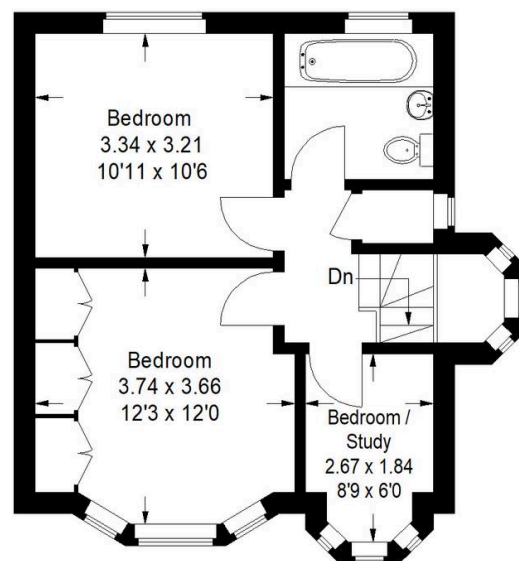
Total = 94.0 sq m / 1011 sq ft



Ground Floor



Lower Ground Floor



First Floor

Illustration for identification purposes only, measurements are approximate, not to scale. Produced by Haboodle Estate Agents (ID1235645)



haboodle