

9 Garden Avenue, Mitcham

OIEO £700,000 Freehold



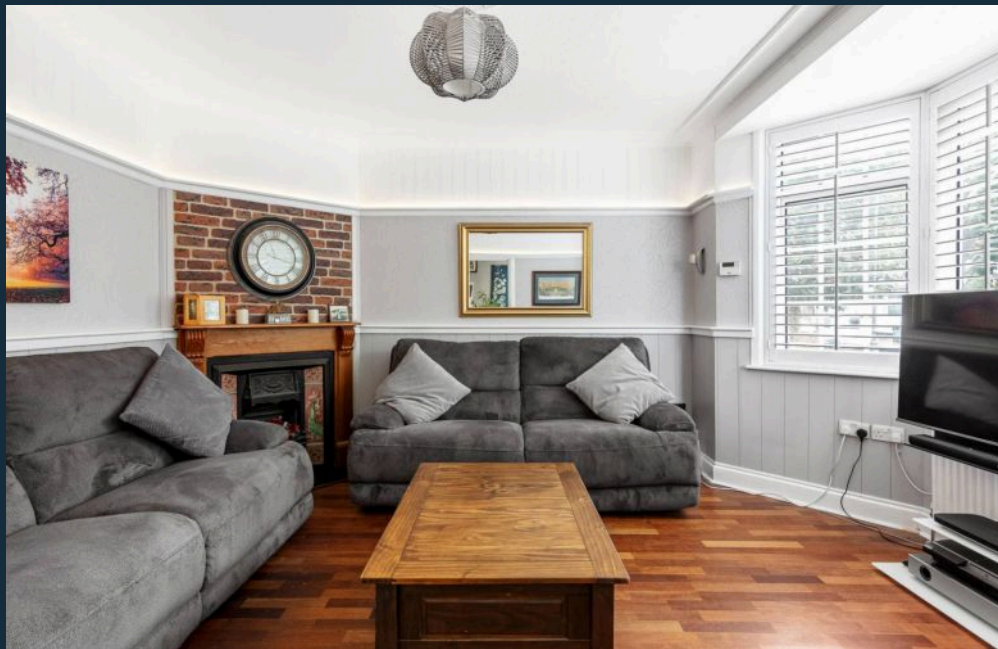
habboodle

A Spacious Five-Bedroom Home with Loft Conversion on the Borders of Tooting and Furzedown

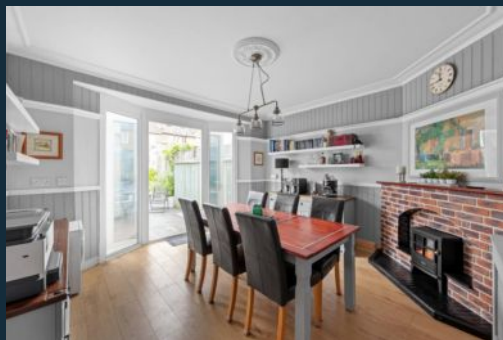
Set on the desirable Garden Avenue - a peaceful residential street close to the Tooting and Furzedown borders, this well-proportioned five-bedroom family home has been thoughtfully extended and finished to a high standard throughout.

The property is arranged over three floors, offering generous living space and excellent flexibility for growing families. The ground floor comprises a bright front reception room with a bay window and a separate dining room with French doors that open directly onto the garden. The kitchen is well presented and practical, providing ample storage and workspace.

Upstairs, the first floor features three well-sized bedrooms and a modern family bathroom. A recent loft conversion adds two additional bedrooms and a contemporary shower room, creating a perfect top-floor retreat for older children, guests, or a home office.

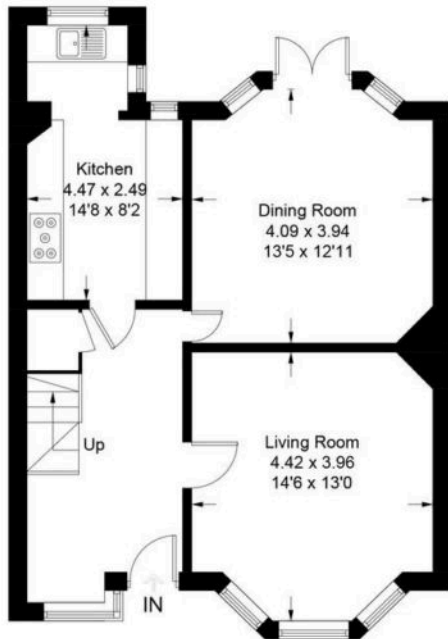


- › Spacious Living Accommodation
- › Five Bedrooms
- › Loft Conversion with Two Bedrooms & Shower Room
- › Separate Kitchen
- › Dining Room with French Doors to Garden
- › Low-Maintenance Paved Rear Garden
- › Well Presented Throughout
- › Desirable Location Near Furzedown & Tooting Borders

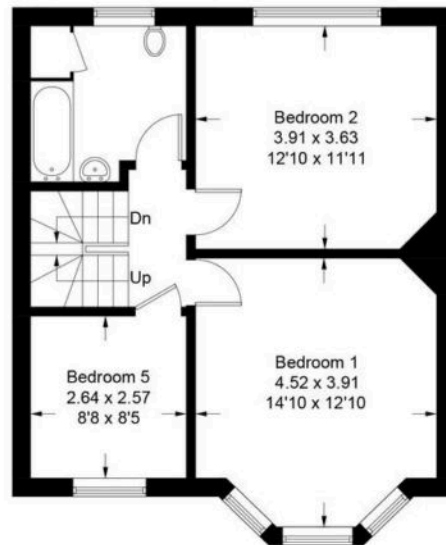


Garden Avenue, CR4

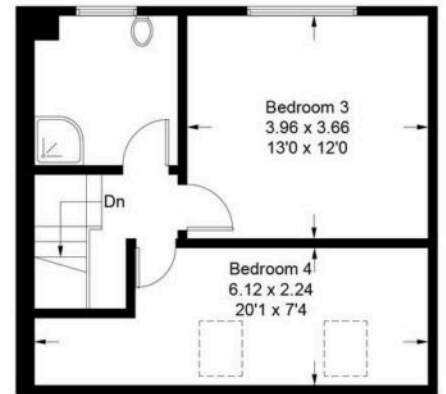
Approximate Gross Internal Area = 145.5 sq m / 1566 sq ft



Ground Floor



First Floor



Second Floor

Illustration for identification purposes only, measurements are approximate, not to scale. Fourlabs.co © (ID1234330)



haboodle