

St. Lawrence Terrace

W10

£4,350,000





## St. Lawrence Terrace

W10

A refined five-bedroom home with generous proportions and timeless detailing. Both tucked away on a peaceful residential street in North Kensington but also right in the centre of all that is vibrant in both the Golborne and Portobello Roads, this is a home that balances charm and practicality in equal measure.

Set across just under 3,000 sqft, this beautifully curated family home unfolds over four light-filled levels. A double reception on the raised ground floor sets the tone—original features, high ceilings and wooden floors come together to create a space both elegant and inviting. French doors open onto a Juliette balcony with views over the patio garden below.

On the lower level, the mood turns more contemporary. An expansive open-plan kitchen and dining space forms the heart of the home, with a central island, family snug, and easy flow out to the garden, designed with entertaining in mind. A second reception adds further flexibility, perfect for quiet evenings or play.

Five well-proportioned bedrooms occupy the upper floors, each with bespoke wardrobes and plenty of natural light. Four sleek bathrooms are thoughtfully positioned throughout, blending clean lines with classic finishes.



# St. Lawrence Terrace

W10

St. Lawrence Terrace is an attractive, quiet address located close to the Golborne Road and Portobello Road and the fabulous amenities of Notting Hill. Ladbroke Grove underground station (Circle and Hammersmith & City Lines) is within close proximity.

Council Tax band: G

Tenure: Freehold

EPC Energy Efficiency Rating: C

EPC Environmental Impact Rating: D











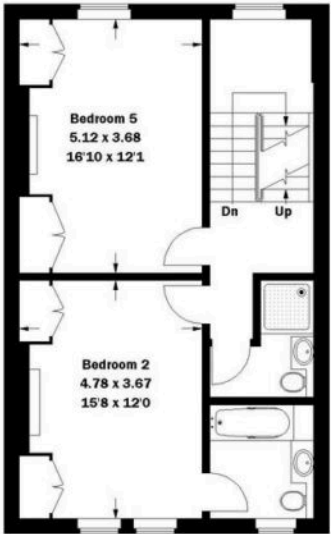
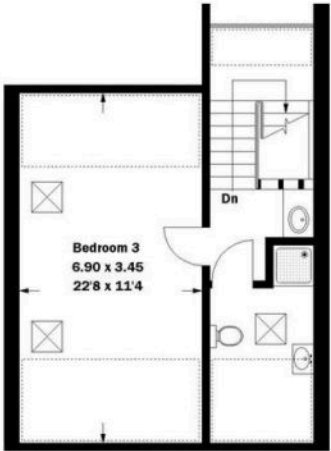
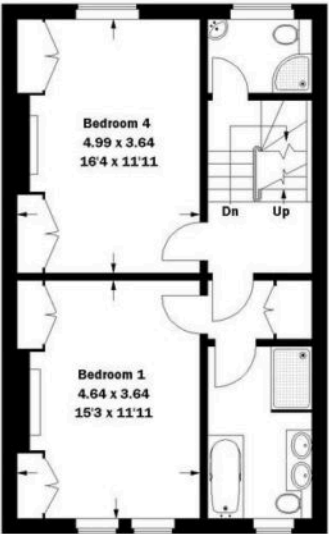
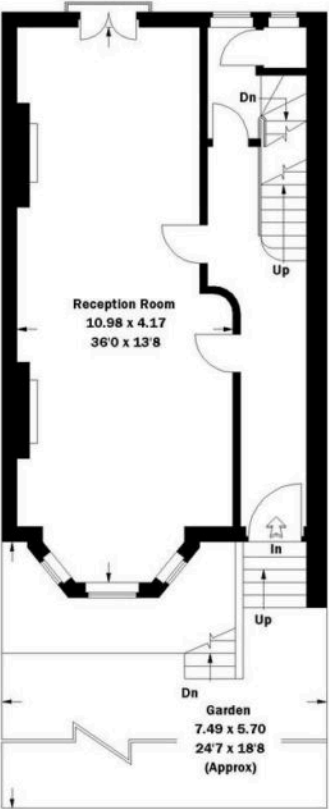






**St Lawrence Terrace, W10**

Approximate Gross Internal Area > 278 sq m / 2992 sq ft



= Reduced headroom  
below 1.5 m / 5'0

Illustration for Identification Purposes Only. Not to Scale.





## Rigby & Marchant

115 Westbourne Studios 242 Acklam Road, London - W10 5JJ

020 7221 7210

[sales@rigbyandmarchant.co.uk](mailto:sales@rigbyandmarchant.co.uk)

[www.rigbyandmarchant.co.uk/](http://www.rigbyandmarchant.co.uk/)

