



32a Miranda Road, London

Guide Price **£625,000**

**DAVID
ANDREW**

your
most
valuable
asset

32a Miranda Road

London, London

David Andrew are proud to present this well beautifully decorated share of freehold two bedroom garden flat with a private entrance, beautifully landscaped garden, and a powered studio, offering a rare blend of charm and functionality. The spacious 699 sq ft (64.9 sqm) flat boasts a large reception and dining area with French doors to the garden, a tiled bathroom with bath, shower, and storage, and plenty of storage throughout.

Situated in Whitehall Park Conservation Area, Miranda Road is a quiet tree-lined street that's conveniently located within walking distance of Archway underground station (Northern Line), Upper Holloway station (overground) and the open spaces of Whittington Park, Waterlow Park and Parliament Hill. You can also find the wealth of local shops, bars, and restaurants that Archway, Highgate Village and Crouch End have to offer.

Council Tax band: D

Tenure: Share of Freehold

EPC Energy Efficiency Rating: C

EPC Environmental Impact Rating:

- 699 Sq Ft – 64.9 Sqm
- Renovated Two Bedroom Garden Flat
- Private Entrance – Plenty of Storage
- Beautifully Landscaped Garden
- Powered & Lined Studio
- Large Reception & Dining w/ French Doors
- Tiled Bathroom with Bath, Shower and Storage
- Excellent Zone 2 Transport Links

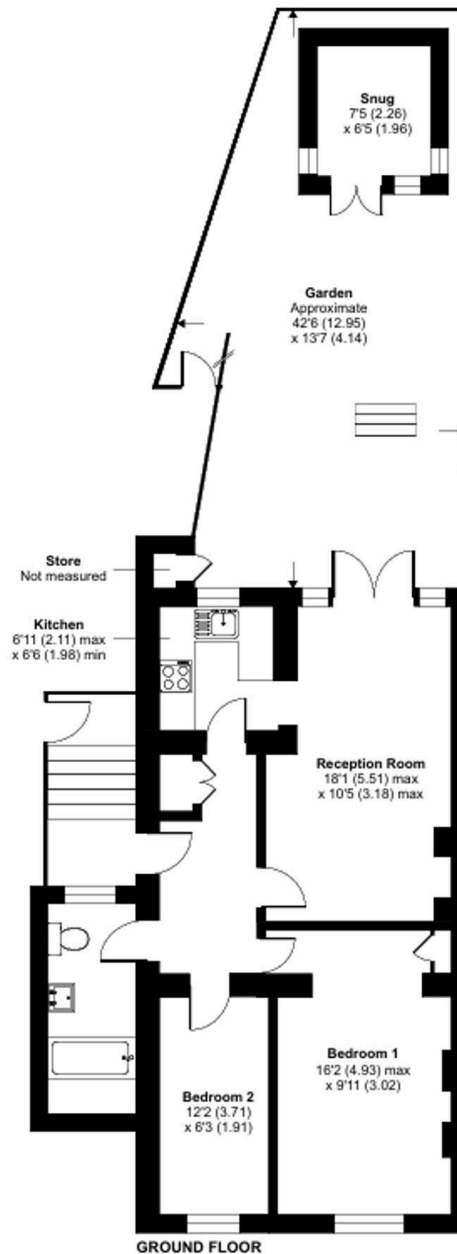




Miranda Road, London, N19

Approximate Area = 651 sq ft / 60.5 sq m
Outbuilding = 48 sq ft / 4.4 sq m
Total = 699 sq ft / 64.9 sq m

For identification only - Not to scale



GROUND FLOOR



Floor plan produced in accordance with RICS Property Measurement 2nd Edition, Incorporating International Property Measurement Standards (IPMS2 Residential). © nitchcom 2025. Produced for David Andrew. REF: 1339587



DAVID ANDREW

your
most
valuable
asset

Archway Office

671 Holloway Road
London, N19 5SE

T (0)20 7619 3750

Highbury Office

90 Highbury Park
London, N5 2XE

T (0)20 7354 9111

Finsbury Park Office

167 Stroud Green Road
London, N4 3PZ

T (0)20 7281 2000

Property Management Office

235 Blackstock Road
London, N5 2LL

T (0)20 7354 9222

scan to book
a viewing



se:
e has been exercised in the
of these particulars,
about the property must not be
on as representations of
or fact. Prospective applicants
e and rely upon their own
and those of professional
tives. David Andrew Estates
liability for any error contained
in these particulars.

